

MANISCOPIC MVT 1340L

- Lift Capacity: 8,000 lb.
- Maximum Lift Height: 42 ft. 1 in.
- Maximum Forward Reach: 29 ft. 11 in.
- Perkins 93 HP Engine
- Hydrostatic Transmission
- Four Wheel Drive
- Three Steering Modes



MVT 1340L



Lift Capacity:

Maximum (24 in. load center)8,000 lb.
Digging out force on bucket tooth



Lift Height:

with tilting ram10,400 lb.
42 ft. 1in.

Forward reach29 ft. 11 in.



Tires:15.5 x 25 12PR



Forks:

Length48 in.

Thickness/width2 in. x 4 in.

Maximum distance between forks47 in.

Carriage tilt146°



Brakes:

ServiceHydraulically assisted

Parking brakeElectrical/Hydraulic



Engine:

TypePerkins 1004.4 Diesel

Capacity4 cyl. - 243 cu.in.

Power93 HP/ 73 kw

Maximum torque278 ft.lb. at 1400 RPM

InjectionDirect

CoolingWater

Transmission:

TypeHydrostatic

Reversing shiftElectromagnetic

Maximum travel speed20 mph



Hydraulics:

Main pump (gear type)3840 PSI - 28 gpm

Steering pump (gear type) ..1990 PSI - 9.8 gpm



Capacities:

Cooling system6.6 gal.

Engine oil2.2 gal.

Hydraulic oil33 gal.

Hydrostatic transmission9.6 gal.

Fuel tank20 gal.



Specifications:

Weight unladen (with forks)22,025 lb.

Overall width92.5 in.

Overall height97 in.

Turning radius (outside wheels)147 in.

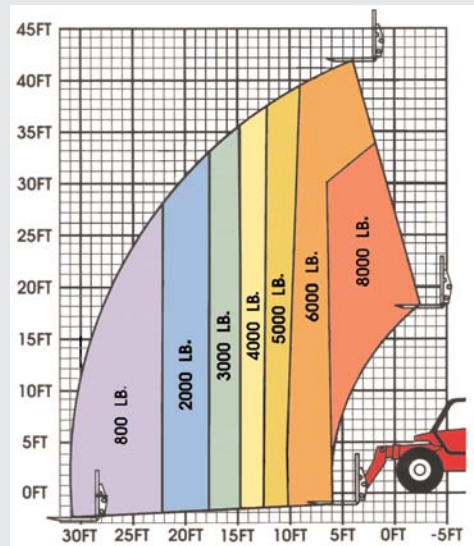
Overall length216 in.

Ground clearance18 in.



LOAD CAPACITY CHART

EQUIPPED WITH STANDARD FORK CARRIAGE ATTACHMENT
(OPTIONAL ATTACHMENTS CAN DERATE THIS CHART)



Capacities shown in pounds/feet are the maximum recommended load limits at the indicated extensions of the boom. Capacity ratings are based on a 48" homogeneous cube and are in accordance with ANSI/ASME B56.6 stability standards. Capacity reductions must be made for extended load centers and when used with various other attachments, contact MANITOU NORTH AMERICA, INC.

DIMENSIONS:

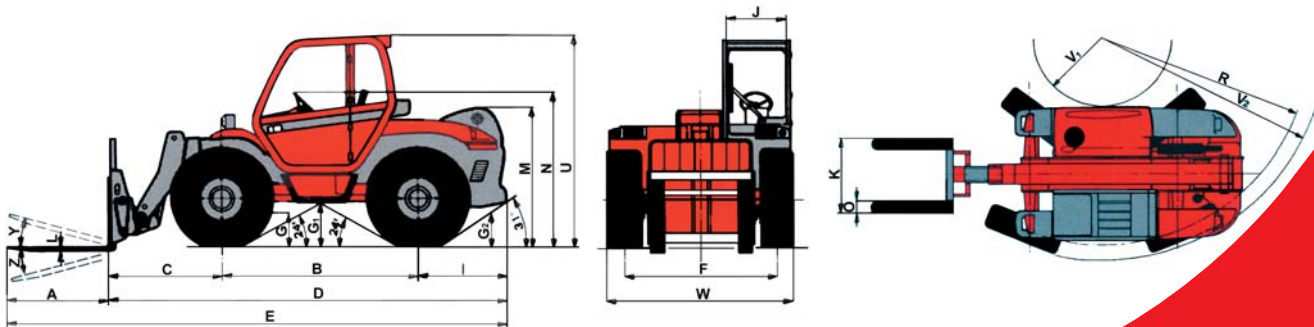
A.....	48
B.....	104
C.....	55
D.....	216
E.....	264
F.....	78
G.....	17.7
G ₁	18.7
G ₂	17.7
I.....	53
J.....	34
K.....	42
L.....	2
M.....	71
N.....	75
O.....	4
R.....	127.5
U.....	97
V ₁	34.6
V ₂	147.7
W.....	92.5
Y.....	12°
Z.....	10°

STANDARD EQUIPMENT:

- Full Time Power Steering
- Three Modes of Steering with Axle Alignment Indicator
- Adjustable Cushioned Ride Seat with Seat Belt
- Warning Lights for High Oil Temperatures
- Air Cleaner Service Indicator
- Hydraulic Oil Filter Restriction Gauge
- Road Lights
- Keyed Ignition Switch
- Horn
- Alternator
- Backup Alarm
- Wet Disc Brakes
- Neutral Start Switch
- Instrument Cluster with Engine Oil Pressure, Water Temperature, Ammeter, Fuel Level Gauge
- Auxiliary Hydraulic Circuit
- Tow Pin
- Engine Hour Meter

OPTIONAL EQUIPMENT:

- Slope Piling Carriage
- Jib Extension
- Multi-purpose Bucket (4 in 1)
- 1.25 cu.yd. Bucket
- 2.5 cu.yd. Loose Material Bucket



This publication in no way constitutes an offer and the company reserves the right to alter specification without prior notice. The MANITOU models presented in this brochure can be supplied complete with optional equipment attachments.

MANITOU NORTH AMERICA, INC.
P.O. Box 21386
Waco, TX 76702-1386
Tel: 800-433-3304 Fax: 254-799-4433
www.manitou-na.com

