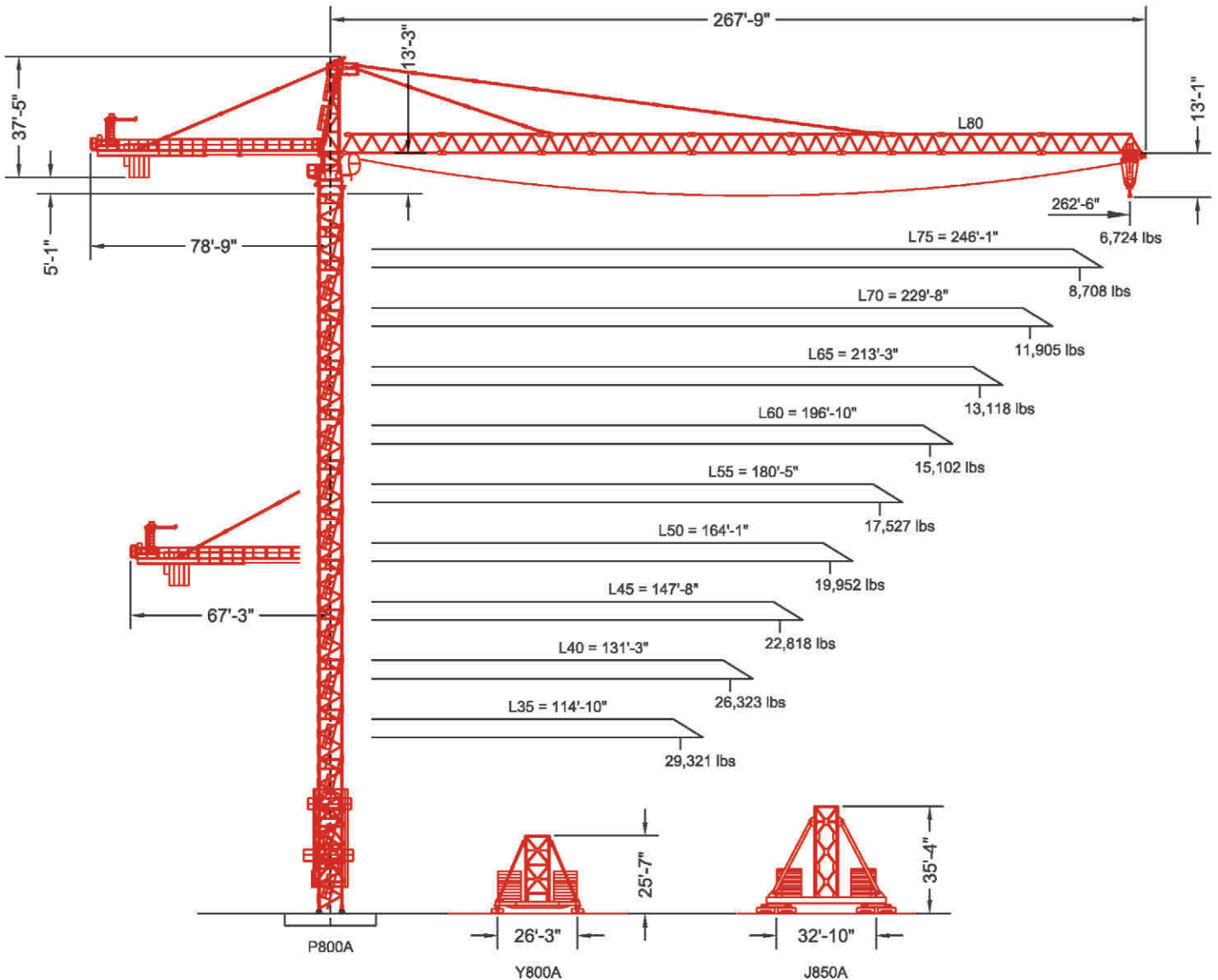


MD 485B-M25

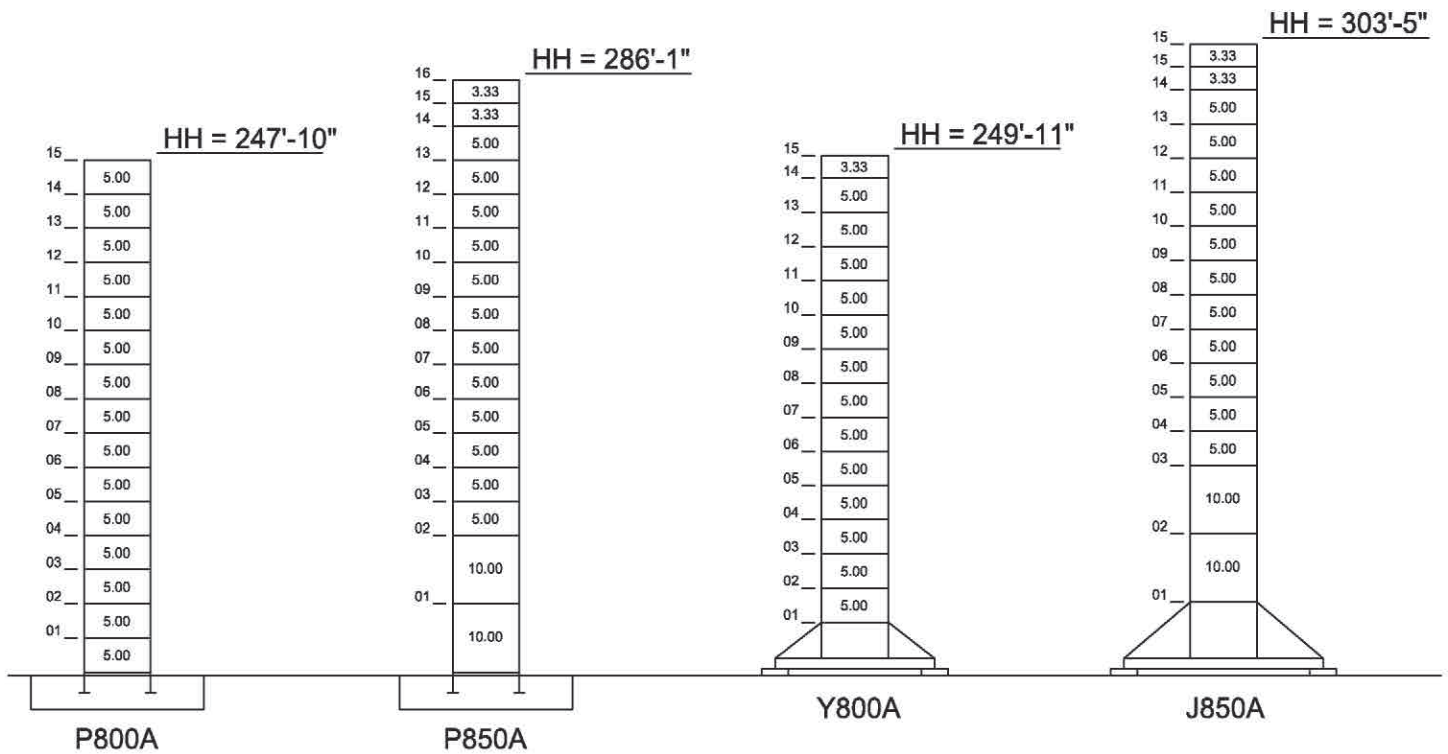
Maximum Capacity = 55,116 lbs



Note: Tip capacities are dependent on certain trolley types.

F.E.M. 1.001

Maximum Free-Standing Hook Heights



Mechanical Data

Function	Hoist Type	Speed vs Weight	2-part					4-part					Motor (hp)	Motor (kW)	Rope Length (ft)
			1st Gear	2nd Gear	3rd Gear	4th Gear	5th Gear	1st Gear	2nd Gear	3rd Gear	4th Gear	5th Gear			
Hoist	166 LBR 63	ft/min lbs	151 27,558	237 16,535	375 9,700	598 5,291		76 55,116	119 33,069	188 19,401	299 10,582		166	122	2,077
	150 LCC 63	ft/min lbs	151 27,558	184 19,842	230 13,228	302 6,614	361 3,439	76 55,116	92 39,683	115 26,455	151 13,228	181 6,878	150	110	1,512
Trolley	10 DVF 10	ft/min	LBR: 263 (55,116 lbs) LCC: 210 (55,116 lbs) / 329 (27,558 lbs) / 361 (13,779 lbs)									10	7.4		
Swing	R 27	rpm	1.00									3 x 9.0	3 x 6.6		
	RVF 183 optima +	rpm	0.80									3 x 12	3 x 9.0		

Power Requirements: 480 V (+6% or -10%) 60 Hz measured at turn table.

Amperage: 166 LBR 63: 229 Amp (3 phase service with ground)

Amperage: 150 LCC 50: 259 Amp (3 phase service with ground)

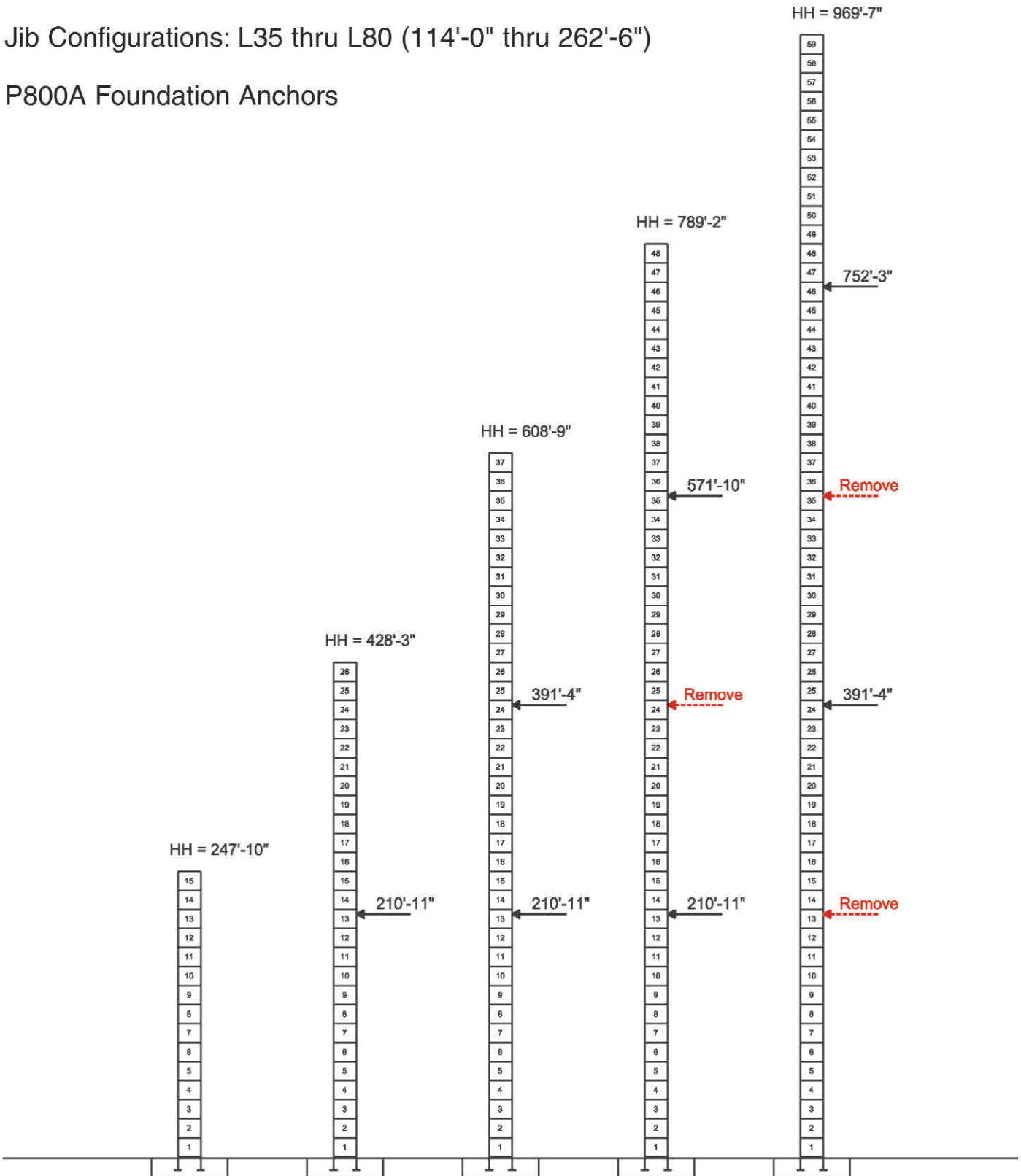
Notes:

1. The 150 LCC 63 is the standard hoist option for the MD 485B-M25. Other hoist options must be at the request of the customer.
2. The RVF 183 swing motor system comes standard with 150 LCC 63 and the R 27 must only be use with the 166 LBR 63.
3. Values given under "Rope Length" are for drum spooling capacity only.

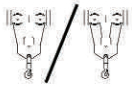
External Climbing

Jib Configurations: L35 thru L80 (114'-0" thru 262'-6")

P800A Foundation Anchors



Rated Load Chart



SM-DM Trolley

Capacity (lbs)

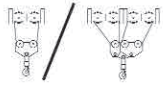
Hook Radius	Jib Length									
	262'-6"	246'-1"	229'-8"	213'-3"	196'-10"	180'-5"	164'-1"	147'-8"	131'-3"	114'-10"
20'-0"	55,116	55,116	55,116	55,116	55,116	55,116	55,116	55,116	55,116	55,116
30'-0"	55,116	55,116	55,116	55,116	55,116	55,116	55,116	55,116	55,116	55,116
40'-0"	55,116	55,116	55,116	55,116	55,116	55,116	55,116	55,116	55,116	55,116
50'-0"	51,955	55,116	55,116	55,116	55,116	55,116	55,116	55,116	55,116	55,116
60'-0"	41,988	46,732	55,116	55,116	55,116	55,116	55,116	55,116	55,116	55,116
70'-0"	34,986	39,057	46,407	46,513	48,241	50,284	50,912	51,540	51,855	52,275
80'-0"	29,798	33,371	39,797	39,889	41,393	43,171	43,719	44,266	44,539	44,818
90'-0"	26,377	28,988	34,703	34,784	36,116	37,690	38,175	38,659	38,901	39,089
100'-0"	23,196	26,078	30,657	30,730	31,925	33,337	33,772	34,206	34,423	34,549
110'-0"	20,609	23,243	27,558	27,558	28,515	29,796	30,190	30,584	30,781	30,864
114'-10"	19,525	22,055	26,523	26,587	27,558	28,312	28,689	29,066	29,254	29,321
120'-0"	18,463	20,891	25,172	25,233	26,232	27,343	27,558	27,579	27,760	
130'-0"	16,655	18,909	22,871	22,927	23,847	24,872	25,270	25,546	25,728	
131'-3"	16,451	18,686	22,612	22,667	23,579	24,593	24,988	25,261	25,441	
140'-0"	15,110	17,216	20,905	20,957	21,810	22,760	23,130	23,385		
147'-8"	14,074	16,081	19,587	19,636	20,444	21,344	21,694	21,936		
150'-0"	13,775	15,753	19,207	19,255	20,050	20,935	21,280			
160'-0"	12,610	14,476	17,724	17,769	18,514	19,343	19,666			
164'-1"	12,180	14,005	17,177	17,221	17,947	18,755	19,070			
170'-0"	11,584	13,352	16,419	16,462	17,162	17,941				
180'-0"	10,674	12,355	15,261	15,301	15,962	16,697				
180'-5"	10,636	12,313	15,213	15,253	15,911	16,645				
190'-0"	9,862	11,464	14,227	14,265	14,890					
196'-10"	9,353	10,907	13,580	13,617	14,220					
200'-0"	9,131	10,664	13,298	13,334						
210'-0"	8,471	9,941	12,458	12,492						
213'-3"	8,270	9,720	12,202	12,236						
220'-0"	7,872	9,284	11,696							
229'-8"	7,344	8,705	11,023							
230'-0"	7,326	8,685								
240'-0"	6,826	8,137								
246'-1"	6,542	7,826								
250'-0"	6,366									
260'-0"	5,942									
262'-6"	5,842									

Max. Load Radius										
From	10'-2"	10'-2"	10'-2"	10'-2"	10'-2"	10'-2"	10'-2"	10'-2"	10'-2"	10'-2"
To	47'-6"	52'-0"	60'-2"	60'-4"	62'-3"	64'-7"	65'-3"	66'-0"	66'-4"	66'-10"

Notes:

1. The above load chart was calculated using the SM-DM trolley system.
2. Values above the red line can be achieved with 4-part line configuration only.
3. Deduct 529 lbs from values below the red line when using 4-part line configuration instead of 2-part.

Rated Load Chart



1C-2C Trolley

2-Part Capacity (lbs)

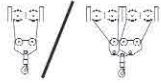
Hook Radius	Jib Length									
	262'-6"	246'-1"	229'-8"	213'-3"	196'-10"	180'-5"	164'-1"	147'-8"	131'-3"	114'-10"
20'-0"	27,558	27,558	27,558	27,558	27,558	27,558	27,558	27,558	27,558	27,558
30'-0"	27,558	27,558	27,558	27,558	27,558	27,558	27,558	27,558	27,558	27,558
40'-0"	27,558	27,558	27,558	27,558	27,558	27,558	27,558	27,558	27,558	27,558
50'-0"	27,558	27,558	27,558	27,558	27,558	27,558	27,558	27,558	27,558	27,558
60'-0"	27,558	27,558	27,558	27,558	27,558	27,558	27,558	27,558	27,558	27,558
70'-0"	27,558	27,558	27,558	27,558	27,558	27,558	27,558	27,558	27,558	27,558
80'-0"	27,558	27,558	27,558	27,558	27,558	27,558	27,558	27,558	27,558	27,558
90'-0"	27,259	27,558	27,558	27,558	27,558	27,558	27,558	27,558	27,558	27,558
100'-0"	24,078	26,960	27,558	27,558	27,558	27,558	27,558	27,558	27,558	27,558
110'-0"	21,491	24,125	27,558	27,558	27,558	27,558	27,558	27,558	27,558	27,558
114'-10"	20,407	22,937	27,405	27,469	27,558	27,558	27,558	27,558	27,558	27,558
120'-0"	19,345	21,773	26,054	26,115	27,114	27,558	27,558	27,558	27,558	
130'-0"	17,537	19,791	23,753	23,809	24,729	25,753	26,152	26,428	26,610	
131'-3"	17,333	19,568	23,494	23,549	24,461	25,475	25,870	26,143	26,323	
140'-0"	15,992	18,098	21,787	21,839	22,692	23,642	24,012	24,267		
147'-8"	14,956	16,962	20,469	20,518	21,326	22,226	22,576	22,818		
150'-0"	14,657	16,635	20,089	20,137	20,932	21,817	22,162			
160'-0"	13,492	15,358	18,606	18,651	19,396	20,225	20,548			
164'-1"	13,062	14,887	18,059	18,103	18,829	19,637	19,952			
170'-0"	12,466	14,234	17,301	17,343	18,044	18,823				
180'-0"	11,556	13,237	16,143	16,183	16,844	17,579				
180'-5"	11,518	13,195	16,094	16,134	16,793	17,527				
190'-0"	10,744	12,346	15,109	15,147	15,772					
196'-10"	10,235	11,789	14,462	14,498	15,102					
200'-0"	10,013	11,546	14,179	14,215						
210'-0"	9,353	10,822	13,340	13,374						
213'-3"	9,152	10,602	13,084	13,118						
220'-0"	8,754	10,166	12,577							
229'-8"	8,226	9,587	11,905							
230'-0"	8,208	9,567								
240'-0"	7,708	9,019								
246'-1"	7,424	8,708								
250'-0"	7,248									
260'-0"	6,824									
262'-6"	6,724									

Max. Load Radius										
From	10'-2"	10'-2"	10'-2"	10'-2"	10'-2"	10'-2"	10'-2"	10'-2"	10'-2"	10'-2"
To	89'-2"	98'-2"	114'-3"	114'-6"	118'-4"	122'-7"	124'-2"	125'-4"	126'-1"	114'-10"

MD 485B-M25



Rated Load Chart



1C-2C Trolley

4-Part Capacity (lbs)

Hook Radius	Jib Length									
	262'-6"	246'-1"	229'-8"	213'-3"	196'-10"	180'-5"	164'-1"	147'-8"	131'-3"	114'-10"
20'-0"	55,116	55,116	55,116	55,116	55,116	55,116	55,116	55,116	55,116	55,116
30'-0"	55,116	55,116	55,116	55,116	55,116	55,116	55,116	55,116	55,116	55,116
40'-0"	55,116	55,116	55,116	55,116	55,116	55,116	55,116	55,116	55,116	55,116
50'-0"	50,901	55,116	55,116	55,116	55,116	55,116	55,116	55,116	55,116	55,116
60'-0"	40,929	45,633	54,285	54,480	55,116	55,116	55,116	55,116	55,116	55,116
70'-0"	33,924	37,961	45,359	45,525	47,149	49,098	49,910	50,397	50,721	51,195
80'-0"	28,734	32,276	38,745	38,889	40,303	41,999	42,706	43,130	43,413	43,737
90'-0"	24,734	27,895	33,647	33,775	35,027	36,529	37,154	37,530	37,780	38,008
100'-0"	21,557	24,416	29,599	29,714	30,836	32,184	32,745	33,082	33,306	33,469
110'-0"	18,972	21,585	26,305	26,409	27,427	28,649	29,158	29,464	29,667	29,784
114'-10"	17,889	20,399	24,925	25,025	25,999	27,168	27,655	27,947	28,142	28,241
120'-0"	16,829	19,238	23,574	23,669	24,600	25,718	26,183	26,463	26,649	
130'-0"	15,022	17,259	21,272	21,360	22,218	23,247	23,676	23,934	24,105	
131'-3"	14,819	17,037	21,013	21,100	21,949	22,969	23,394	23,649	23,819	
140'-0"	13,479	15,569	19,306	19,387	20,182	21,137	21,535	21,773		
147'-8"	12,444	14,436	17,986	18,063	18,817	19,721	20,098	20,324		
150'-0"	12,146	14,109	17,606	17,682	18,423	19,313	19,684			
160'-0"	10,982	12,834	16,123	16,194	16,888	17,721	18,069			
164'-1"	10,552	12,364	15,576	15,645	16,322	17,134	17,473			
170'-0"	9,957	11,712	14,817	14,884	15,537	16,320				
180'-0"	9,048	10,716	13,659	13,722	14,338	15,077				
180'-5"	9,010	10,675	13,610	13,673	14,288	15,025				
190'-0"	8,236	9,827	12,624	12,684	13,267					
196'-10"	7,729	9,271	11,977	12,035	12,597					
200'-0"	7,507	9,028	11,695	11,751						
210'-0"	6,848	8,306	10,855	10,909						
213'-3"	6,647	8,086	10,599	10,652						
220'-0"	6,249	7,651	10,092							
229'-8"	5,721	7,073	9,419							
230'-0"	5,704	7,053								
240'-0"	5,204	6,506								
246'-1"	4,921	6,196								
250'-0"	4,745									
260'-0"	4,321									
262'-6"	4,221									

Max. Load Radius										
From	10'-2"	10'-2"	10'-2"	10'-2"	10'-2"	10'-2"	10'-2"	10'-2"	10'-2"	10'-2"
To	46'-9"	51'-1"	59'-3"	59'-5"	61'-2"	63'-4"	64'-3"	64'-9"	65'-2"	65'-9"

MD 485B-M25





Constant improvement and engineering progress make it necessary that we reserve the right to make specification, equipment, and price changes without notice. Illustrations shown may include optional equipment and accessories, and may not include all standard equipment. Product brochures are for illustration purposes only. Contact the manufacturer or consult the operation manual for specific details concerning this product.

Manitowoc Crane Group - Americas

Shady Grove, Pennsylvania Facility
1565 Buchanan Trail East
Shady Grove, PA 17256-0021, USA
Tel: [Int + 001] 717 597 8121
Fax: [Int + 001] 717 597 4062

MD 485B-M25

