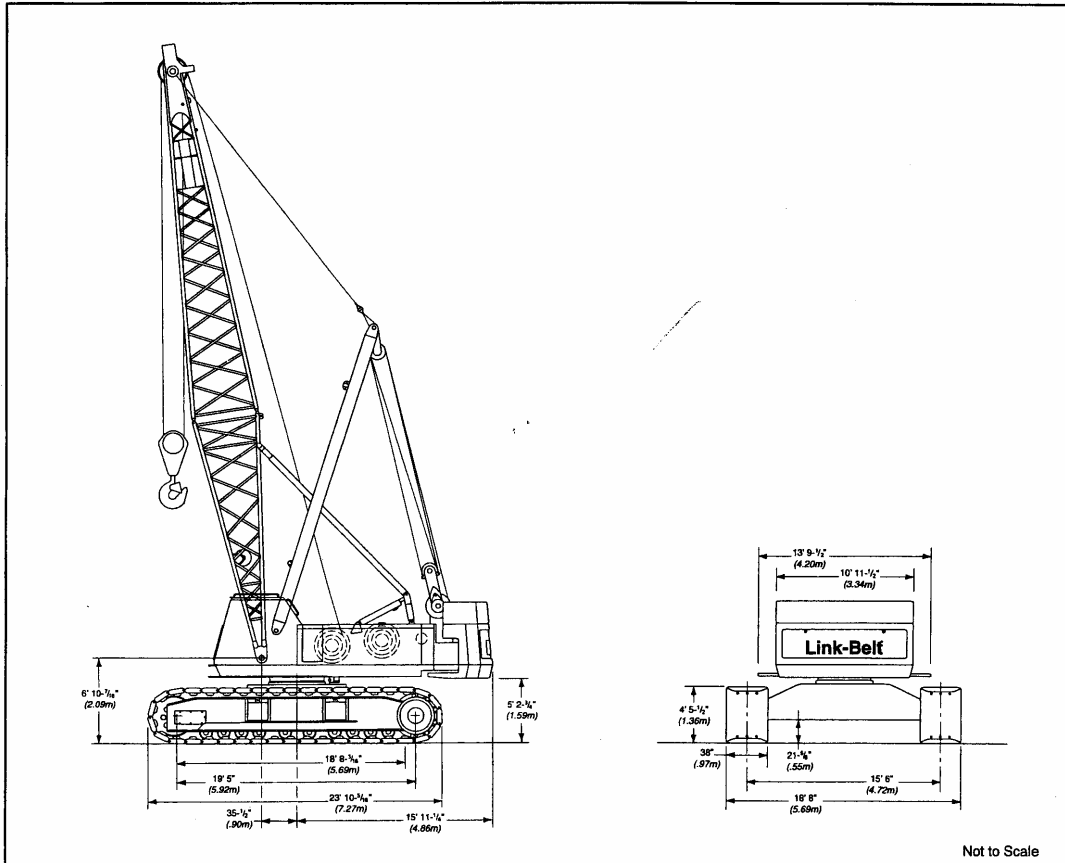


Specifications

Hydraulic Lattice Boom Crawler Crane

LS-238H

150-Ton (136 metric ton)



Not to Scale

General dimensions	feet	meters
Basic boom length	50	15.24
Overall width of machine with 38" (.96 m) track shoes	18.66	5.68
Overall width of cab w/catwalks both sides	13.79	4.20
Overall width of cab less catwalks	10.95	3.34

General dimensions	feet	meters
Tailswing of counterweight "A"	14.95	4.50
Tailswing of counterweight "AB"	15.94	4.85
Tailswing of counterweight "ABC"	15.94	4.85
Overall height for transport w/boom base	13.31	4.05
Overall height for transport w/live mast only	13.31	4.05
Maximum tailswing of live mast	19.71	6.01

Machine Working Weights - approximate

Based on standard machine including Isuzu 6SA1TPA-07 diesel engine, turntable bearing, independent hydraulic powered drums, boomhoist limiting device, independent hydraulic swing and travel, counterweight "ABC", swing brake, drum rotation indicators, and 15' 6" (4.72 m) gauge by 23' 10" (7.26 m) long crawler lower with 38" (.96 m) wide track shoes, sealed track rollers, catwalks, hydraulic boomfoot pin removal, plus the following:	Ctwt. "A"		Ctwt. "AB"		Ctwt. "ABC"		Ctwt. "ABC" + Track Ctwt.	
	lbs.	kg	lbs.	kg	lbs.	kg	lbs.	kg
Lifting Crane - includes 50' (15.24 m) basic tubular boom, 26' (7.92 m) live mast, 950' (289.6 m) of 7/8" (22 mm) diameter wire rope, 465' (141.7 m) of 7/8" (22 mm) diameter boomhoist rope, 150-ton (136 m) hook/block, and basic pendants.	165,100	74 889	184,430	83 657	211,100	95 755	231,100	104 827

Transport Weights and Dimensions - ± 3%

Assembly Weight
133,020 lbs. (60 338 kg)

Assembly Weight
138,260 lbs. (62 715 kg)

Basic Machine Shipping Weight
67,690 lbs. (30 704 kg)

Basic Machine Shipping Weight
59,759 lbs. (27 107 kg) Upper & Carbody
+ 2,684 lbs. (1 217 kg) Carbody Jacks
62,443 (28 324 kg) Total

Counterweight Assist Frame
3,400 lbs. (1 542 kg)
(not included in basic machine weight)

"C" Upper Counterweight
26,670 lbs. (12 098 kg)

"B" Upper Counterweight
19,330 lbs. (8 768 kg)

"A" Upper Counterweight
23,000 lbs. (10 433 kg)

"ABC" Counterweight
69,000 lbs. (31 298 kg)

30' (9.14 m) Jib Assembly
36" (.91 m) wide x 30" (.76 m) deep cross-section 1,700 lbs. (770 kg)

Third Drum Winch
2,000 lbs. (907 kg) each
(not included in basic machine weight)

Track Counterweights (2)
10,000 lbs. (4 536 kg) each
(not included in basic machine weight)

70" x 62" (1.77 x 1.57 m) tubular cross-section tubular boom

30' (9.14 m) Peak Section
4,020 lbs. (1 823 kg)

20' (6.10 m) Base Section w/power pins
3,625 lbs. (1 644 kg) - w/o third drum winch
5,625 lbs. (2 552 kg) - w/third drum winch assembly

Dimensions:
42' 0" (12.80 m) MAST OVER FRONT
33' 1-5/8" (10.10 m) MAST OVER REAR
10' 7-11/16" (3.24 m)
47' 2-5/8" (14.39 m)
8' 6" (2.59 m) x 8' 6" (2.59 m)
10' 11-1/2" (3.34 m) CAB WIDTH
23' 10" (7.26 m)
11' 9-3/4" (3.60 m)
14' 5-11/16" (4.41 m)
6' 10-3/8" (2.09 m)

Tread Members
35,000 lbs. (15 876 kg) each

Optional Boom Sections	
10' (3.05 m) boom extension	676 lbs. (400 kg)
10' (3.05 m) with sheaves boom extension	2,050 lbs. (930 kg)
20' (6.10 m) boom extension	1,164 lbs. (645 kg)
30' (9.14 m) boom extension	1,669 lbs. (888 kg)
40' (12.19 m) boom extension	2,156 lbs. (1 131 kg)
50' (15.24 m) boom extension	2,638 lbs. (1 197 kg)
Misc. Items	
Axle wedge packs (4)	336 lbs. (152 kg)
30' (9.14 m) basic pendants	328 lbs. (148 kg)

Crawler Mounting

■ Lower frame

All welded high strength steel (100,000 psi yield), box construction; precision machined surfaces for turntable bearing and axle plates.

■ Turntable bearing

Outer race bolted to upper frame; inner race with internal swing gears bolted to lower.

■ Crawler side frames

All welded, precision machined and removable. Positioned on cross axles by dowels and held in place with adjustable wedgepacks.

■ Track drive sprockets

Cast steel, heat treated, self-cleaning. Powered by hydraulic motors through double reduction gear drive.

■ Track carrier slide rails

Slide rails on top of each side frame.

■ Track rollers

Heat treated, mounted on oil filled "lifetime sealed" anti-friction bearings; 10 per side crawler side frame.

■ Tracks

Heat treated, self-cleaning, multiple hinged track shoes joined by one piece full floating pins; 42 shoes per side frame - 38" (.96 m) wide.

Track tension adjustment - Idler wheel adjusted by means of hydraulic cylinder and hand pump. Idler wheel shaft held in position with shims after adjustment is made.

■ Take up idlers

Cast steel, heat treated, self-cleaning, mounted on aluminum/bronze bushings. Lubricated through idler shaft.

■ Independent hydraulic travel/steering

Power transmitted by axial piston hydraulic motors through double reduction unit to track drive sprocket.

Steering - Axial piston motor with reduction gear is located at inner drive end of each crawler side frame. Each track is driven simultaneously or individually for straight-line, gradual turn, or pivot turn. The tracks can be counterrotated for spin turns.

Brakes - Spring applied, hydraulically released multiple disc brakes are applied automatically when the control lever is in the neutral position.

Travel speed - 0.61 mph (0.97 km/hr).

Gradeability - 30%

■ Jacking system

Optional; four ground controlled, power hydraulic jacks, pinned to the lower carbody frame, used to raise the machine to facilitate removal or installation of the crawler side frames.

Ground contact area and ground bearing pressure

Based on standard machine equipped with "ABC" counterweight and 50' (15.24 m) tubular boom.

Track shoes		Ground contact area		Ground bearing pressure	
inches	meters	sq. in.	cm ²	psi	kg/cm ²
38	.96	17,700	114 193	12.54	0.88

Revolving Upperstructure

■ Frame

All welded and precision machined.

■ Turntable bearing

With integral swing (ring) gear. Inner race with internal swing gear is bolted to lower frame.

■ Engine

Full pressure lubrication, oil filter, air cleaner, hour meter and throttle, electric control shutdown.

■ Fuel tank

77 gallon (291 liter) capacity; equipped with fuel sight level gauge, flame arrester, and self-closing cap with locking eye for padlock.

Engine Specifications	Isuzu 6SA1TPA-07
Number of cylinders	6
Bore and stroke: inch - (mm)	4.53 x 5.31 (115 x 135)
Piston displacement - cu. in. - (cm ³)	513 (8 413)
High idle speed - rpm	2,350
Engine rpm at full load speed	2,100
Net engine hp at full load speed	195
Peak torque - foot pounds - joules	513 (696)
Peak torque - rpm	1,400
Electrical system	24-volt
Batteries	2 - 12 volt

LS-238H Load Hoisting Performance

Available line speed and line pull

Line pulls are not based on wire rope strength. See wire rope chart below for maximum permissible single part of line working loads.

Line Speeds and Pulls

Rope layer	Front Drum - 7/8" (22 mm) wire rope						Rear Drum - 7/8" (22 mm) wire rope					
	Maximum line pull		No load line speed		Full load line speed		Maximum line pull		No load line speed		Full load line speed	
	lbs.	kg	ft./min	m/min	ft./min	m/min	lbs.	kg	ft./min	m/min	ft./min	m/min
1	35,913	16 290	227	69	113	35	22,154	10 049	368	112	184	56
2	33,081	15 006	246	75	123	38	20,407	9 257	399	122	200	61
3	30,649	13 902	266	81	133	41	18,906	8 576	431	131	216	66
4	28,562	12 956	285	87	143	43	17,619	7 992	462	141	231	71
5	26,730	12 125	305	93	152	46	16,489	7 479	494	151	247	75
6	25,129	11 399	324	99	162	49	15,502	7 031	525	160	263	80
7	23,700	10 750	344	105	172	52	14,620	6 632	557	170	279	85

Rope layer	Boomhoist Drum - 7/8" (22 mm) wire rope						Third Drum - 3/4" (19 mm) wire rope					
	Maximum line pull		No load line speed		Full load line speed		Maximum line pull		No load line speed		Full load line speed	
	lbs.	kg	ft./min	m/min	ft./min	m/min	lbs.	kg	ft./min	m/min	ft./min	m/min
1	40,842	18 526	112	34	100	30	18,961	8 601	248	76	185	56
2	36,760	16 674	124	38	111	34	17,607	7 986	268	82	199	61
3	33,417	15 158	136	42	122	37	16,433	7 454	287	88	214	65
4	30,633	13 895	149	45	133	41	15,406	6 988	306	93	228	70
5	28,276	12 826	161	49	144	44	14,500	6 577	325	99	242	74
6	26,257	11 910	174	53	155	47	--	--	--	--	--	--
7	24,506	11 116	186	57	166	51	--	--	--	--	--	--

Wire Rope Drum Capacities

Rope layer	Boomhoist Drum Capacity - 7/8" (22 mm) wire rope					
	Pitch Diameter		Layer		Total	
	in.	mm	ft.	m	ft.	m
1	15.88	403	51.8	15.8	51.8	15.8
2	17.63	448	57.1	17.4	108.9	33.2
3	19.38	492	62.3	19.0	171.2	52.2
4	21.13	537	67.2	20.5	238.5	72.7
5	22.88	581	72.5	22.1	310.9	94.8
6	24.63	625	77.4	23.6	388.4	118.4
7	26.38	670	82.7	25.2	471.3	143.7

Rope layer	Front Drum Capacity - 7/8" (22 mm) wire rope					
	Pitch Diameter		Layer		Total	
	in.	mm	ft.	m	ft.	m
1	17.6	448	111	33.8	111	33.8
2	19.4	492	122	37.1	233	70.9
3	21.1	537	133	40.5	365	111.4
4	22.9	581	144	43.8	509	155.3
5	24.6	626	155	47.2	664	202.4
6	26.4	670	166	50.5	830	253.0
7	28.1	715	177	53.9	1,007	306.9

Rope layer	Rear Drum Capacity - 7/8" (22 mm) wire rope					
	Pitch Diameter		Layer		Total	
	in.	mm	ft.	m	ft.	m
1	17.6	448	111	33.8	111	33.8
2	19.4	492	122	37.1	233	70.9
3	21.1	537	133	40.5	365	111.4
4	22.9	581	144	43.8	509	155.3
5	24.6	626	155	47.2	664	202.4
6	26.4	670	166	50.5	830	253.0
7	28.1	715	177	53.9	1,007	306.9

Rope layer	Third Drum Capacity - 3/4" (19 mm) wire rope					
	Pitch Diameter		Layer		Total	
	in.	mm	ft.	m	ft.	m
1	19.5	495	148	45.1	148	45.1
2	21.0	533	160	48.8	308	93.9
3	22.5	572	171	52.1	479	146.0
4	24.0	610	182	55.5	661	201.5
5	25.5	648	194	59.1	855	260.6

Wire Rope: size, type and working strength

Wire rope application	Size: diameter		Type	Max. permissible load	
	inches	mm		lbs.	kg
	Boomhoist	7/8		22	LB
Main load hoist	7/8	22	N	22,700	10 297
Jib load hoist	7/8	22	RB	17,500	7 938
Boom pendants (dual)	1-3/8	35	N	64,000	29 030
Jib staylines	7/8	22	N	22,700	10 297
Third drum	3/4	19	RB	18,450	8 369

Wire Rope: types available

- Type "N" - 6 x 25 (6 x 19 class) filler wire, extra improved plow steel, preformed, independent wire rope center, right lay, regular lay.
- Type "LB" - 6 x 25 (6 x 19 class), extra improved plow steel, preformed, independent wire rope center, right lay, alternate lay.
- Type "RB" - 18 x 19 non-rotating, extra, extra improved plow steel, preformed, right regular lay, swaged.

Hydraulic System

■ Hydraulic pumps

Two variable displacement piston pumps operating at 4,000 psi (281.24 kg/cm²) power travel, main drum, auxiliary drum, third drum, and boomhoist functions. One fixed displacement gear pump operating at 3,000 psi (211 kg/cm²) power swing, counterweight lowering, and machine jack functions. One fixed displacement gear pump operating at 1,210 psi (85 kg/cm²) powers pilot control system, clutches, brakes, and pump controls.

■ Pump control ("fine inching") mode

Special fine metering pump setting selectable from the operator's cab allows very slow movements for precision work. Main hoist, auxiliary hoist, boomhoist, third drum, and travel are all supplied with this standard feature.

■ Hydraulic reservoir

42 gal. (159 L), equipped with sight level gauge.

■ Relief valves

Each function is equipped with relief valves to protect the circuit from overload or shock.

■ Hydraulic filtration

Ten micron, full flow line filter furnished in control circuit. All oil is filtered prior to return to sump tank.

■ Hydraulic motors

Main hoist drum, auxiliary hoist drum, boomhoist, swing, and travel are powered by axial piston motors.

■ Counterbalance valves

Upper - Hoist motors are equipped with counterbalance valves to provide positive load lowering and prevent accidental load drop when hydraulic power is suddenly reduced.

Lower - Travel motors are equipped with counterbalance valves to provide positive travel lock and prevent overspeeding of travel motors.

Principal Operating Functions

■ Control system

Remote controlled hydraulic servo for main drum, auxiliary drum, travel, boomhoist, and third drum. Mechanical linkage controls swing. Function speed is proportional to lever movement. Levers are adjustable for operator comfort.

■ Load hoisting and lowering

Main and auxiliary hoist drums are driven by individual axial piston motors and reduction gearing. Load hoisting or lowering is provided by actuating a hydraulic motor. The control lever provides two speeds for hoisting and lowering. Hoisting or lowering speeds are proportional to lever movement.

Freefall - The incorporation of power hydraulic controlled, two-shoe clutches allow freefall operation of the main and auxiliary hoist drums for special crane cycle application. Mode selection switch on control panel allows operator to select the most productive operation mode.

■ Load hoist drums

Main (front) and auxiliary (rear) hoist drums are 16-3/4" (.43 m) root diameter grooved for 7/8" (22 mm) wire rope. Mounted on anti-friction bearings.

Third operating drum - *Optional*; 18-3/4" (.49 m) grooved drum lagging, mounted in boom base section. 3/4" (19 mm) wire rope.

■ Drum clutches

Speed-o-Matic® power hydraulic two-shoe clutches; internal expanding, lined shoes. Clutch spiders are splined to shafts; clutch drums are integral with hoist drums.

Load hoist clutches - Front and rear main drums - clutch drums 20" (.51 m) diameter, 5" (.13 m) width.

■ Drum brakes

External contracting band type; operated by foot pedal equipped with a locking latch. Operator may select automatic brake mode* (spring applied, hydraulically released), which will apply brakes when the hoist control lever is in the neutral position.

*When in the automatic brake mode, the LS-238H meets all OSHA requirements for personnel handling.

■ Drum rotation indicators

Standard for front and rear drums. Audible-type indicators.

■ Drum locking pawl

Standard for front and rear drums; electrically actuated and prevents drum rotation in a lowering direction.

■ Anti two-block system

Standard - A switch mounted on the boom peak activates a buzzer to warn the operator of a two-block condition and simultaneously disengages hoist function while applying the hoist brakes.

■ Swing system

Independent, hydraulic swing is driven by two gear motors through a gear reduction system; free swing when lever is in neutral position.

Swing brake - Spring applied, hydraulically released; controlled by button on swing control lever.

Swing lock - Mechanically controlled, three-position locking mechanism.

Swing speed - Variable from 0 to 2.2 rpm.

■ Boomhoist/lowering system

Independent, hydraulic boomhoist is driven by an axial piston motor through a gear reduction system. Boom hoisting or lowering is performed by actuating or reversing the motor. Boomhoist speed is infinitely variable. Boomhoist speed from 0° to 70° boom angle is 90 seconds.

■ Boomhoist drum

Single grooved lagging 10.68" (.27 m) root diameter.

■ Boomhoist drum locking pawl

Electrically operated.

■ Boomhoist brake

Spring applied, hydraulically released, multiple disc type brake. Brake is automatically applied when control lever is in neutral position.

Boomhoist limiting device - Restricts hoisting boom beyond recommended minimum radius.

■ **Electrical system**

24 volt negative ground system with two 12-volt batteries. Standard lighting system includes: two 70 watt headlights mounted on machine front and one interior cab light.

■ **Operator's cab**

Full vision, modular compartment with safety glass panels. The completely independent cab is insulated against noise and vibration. Sliding operator's door, swing up roof window. Standard equipment includes: heater, defroster, windshield wiper, dry chemical fire extinguisher, sun visor, bubble-type level, fuel gauge, tachometer, hydraulic temperature gauge, engine oil pressure gauge, coolant temperature gauge, and service monitor system.

■ **Machinery cab**

Hinged doors (one on right side, two on left side) for machinery access. Equipped with rooftop access ladder, electric warning horn and skid resistant finish on roof.

■ **Catwalks**

Standard on right and left sides. Catwalks remove for reduced travel width.

■ **Bail**

Pinned to revolving frame. Five sheaves are provided for 16 part boomhoist wire rope reeving. Sheaves mounted on "sealed" anti-friction bearings.

■ **Counterweights**

"A" upper cwt. - 23,000 lbs. (10 433 kg)

"AB" upper cwt. - 42,330 lbs. (19 201 kg)

"ABC" upper cwt. - 69,000 lbs. (31 298 kg)

Track cwt. (2) - 10,000 lbs. (4 536 kg) each

Boom and Jib

■ **Tubular boom**

Two-piece basic boom 50' (15.24 m) long with open throat top section. Boom 70" (1.78 m) wide, 62" (1.57 m) deep at connections. Alloy steel round tubular cords 4" (101.6 mm) outside diameter. Maximum boom length is 240' (73.15 m).

■ **Base section**

20' (6.10 m) long; boomfoot lugs on 55" (1.40 m) centers.

■ **Boom extensions**

Available in 10', 20', 30', 40' and 50' (3.05, 6.10, 9.14, 12.19 and 15.24 m) lengths with appropriate length pendants.

Optional - Special 10' (3.05 m) boom extension with necessary sheaves for handling crawler side frames and counterweight. Can be used as an extension in normal boom makeup. Includes appropriate pendants.

■ **Boom connections**

In-line pin connections.

■ **Boom top section**

Open throat; 30' (9.14 m) long.

■ **Boompoint machinery**

Six 20-1/2" (.52 m) root diameter sheaves mounted on "sealed" anti-friction bearings.

■ **Hydraulic boomfoot pin removal**

Standard; Speed-o-Matic controlled; located between mounting lugs on boom base section.

■ **Boom live mast**

26' (7.92 m) long; supports boomhoist bridle and boom pendants. Required for all boom lengths. May be used as short boom for assembling and disassembly of side frames and boom, but is not intended for general crane service. Refer to operator's manual for boom live mast lifting capacities.

■ **Jib**

Tubular; two-piece basic jib 30' (9.14 m) long; 36" (.91 m) wide, 30" (.75 m) deep at centerline of connections. Alloy steel tubular chords 2-1/2" (63 mm) outside diameter.

Base section - 15' 0" (4.57 m) long.

Jib extensions - Available in 10' (3.05 m), 20' (6.10 m), and 30' (9.14 m) lengths with appropriate length pendants.

Jib connections - In-line, tapered pins.

Tip section - 15' (4.57 m) long; equipped with single peak sheave 21" (.53 m) root diameter, heat treated and mounted on anti-friction bearings. Anchor provided at peak of jib tip section for two-part load hoist wire rope (whipline) connection.

Maximum jib length permitted - 70' (21.34 m). All jib lengths may be mounted at 0°, 15°, or 30° offset to boom.

■ **Jib mast**

12' 7.62" (3.85 m) long, mounted on jib base section. Deflector sheave mounted within mast to guide whipline; mounted on anti-friction bearings.

Jib staylines - Front and back staylines. Back staylines vary in length depending on degree of jib offset from boom centerline; back staylines attached at bottom end of boom top section.

Jib stops - Telescoping type; pinned from jib mast to boom top section and from jib mast to jib base section.

Auxiliary Equipment

■ **Boom angle indicator**

Pendulum type; mounted on boom base section. Electronic type readout on load indicator.

■ **Hook blocks**

Blocks, or weighted ball with swivel hook, *optional* - refer to price list.

■ **Rated capacity limiter**

Standard; electronic load indicator for load hoist line.

■ **Swing alarm**

Standard; audio/visual warning device signals when upper is swinging.

Link-Belt Construction Equipment Company

A unit of Sumitomo Construction Machinery Co., Ltd.

Link-Belt is a registered trademark. All rights reserved. Copyright 1996. We are constantly improving our products and therefore reserve the right to change designs and specifications.

LS-238H Lift Crane Capacities

PCSA Class 12-769
Refer to notes page 7

Boom — Tube: 62" (1.57 m) wide, 70" (1.78 m) deep with open throat top section and 26' (7.92 m) live mast.

Jib — Tube: 36" (.91 m) wide, 30" (.75m) deep.

Counterweights — Refer to chart below.

Mounting — crawler:
overall length: 23' 10-5/16" (7.27 m)
gauge: 15' 6" (4.72 m)

Counterweights					
"A"		"AB"		"ABC"	
Pounds	Kilograms	Pounds	kilograms	Pounds	Kilograms
23,000	10 433	42,330	19 201	69,000	31 298

Open throat boom or boom + jib machine can **lift off** ground unassisted, without load.

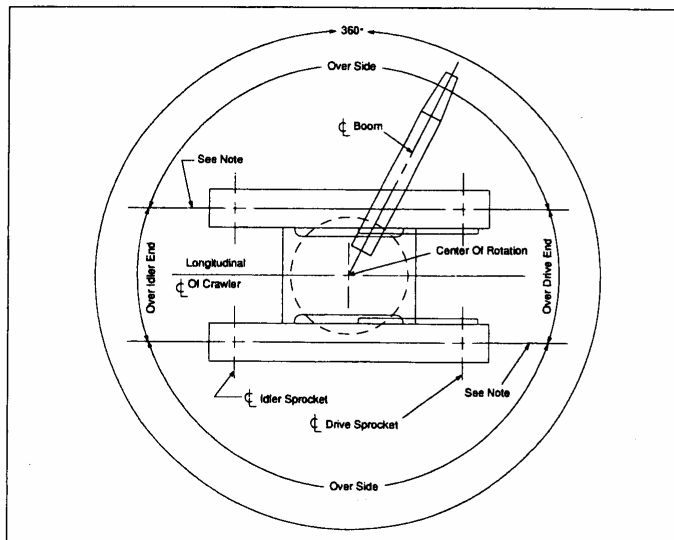
Counterweight		Over End - Blocked				Over Side or Over End Without Blocking			
		Boom		Boom + Jib		Boom		Boom + Jib	
		Feet	meters	Feet	meters	Feet	meters	Feet	meters
No ctwt.	Maximum	160	48.77	130 + 60	39.62 + 18.29	130	39.62	110 + 40	33.53 + 12.19
Ctwt. "A"	Maximum	190	57.91	170 + 40	51.82 + 12.19	170	51.82	140 + 50	42.67 + 15.24
Ctwt. "AB"	Maximum	220	99.79	190 + 50	57.91 + 15.24	190	57.91	170 + 40	51.82 + 12.19
Ctwt. "ABC"	Maximum	240	108.86	210 + 70	95.26 + 21.34	230	70.10	190 + 70	57.91 + 21.34

Notes:

- Booms must be erected or lowered over the end with no load.
- Crane on firm and level surface.

Working Areas

- These lines determine the limiting position of any load for operation within working areas indicated.



Caution: This material is for reference only. Operator must refer to in-cab capacity plate to determine allowable machine lifting capacities and operating procedures.

LS-238H Lift Crane Capacities

Boom Length (ft.)	Load Radius (ft.)	Boom Angle (deg.)	Capacity (thousands of lbs.) 360 Degree Rotation					Capacity (thousands of lbs.) Over End - Blocked			Load Radius (ft.)
			"ABC" + 0	"AB" + 0	"A" + 0	No	"ABC +	"ABC" + 0	"ABC +		
			ctwt.	ctwt.	ctwt.	ctwt.	20,000 lb. ctwt.	ctwt.	20,000 lb. ctwt.		
35' [Ⓞ] (10.67m) Hammerhead Tip	10	82.0					300.0 *				
	15	72.9					225.9 *				
	20	63.2					154.4				
	25	52.3					108.7				
	30	39.1					83.1				
	35	17.6					54.7 *				
50' (15.24m)	12	79.6	250.0 *	250.0 *	235.3 *	181.5	250.0 *	250.0 *	250.0 *	12	
	13	78.4	250.0 *	236.9 *	212.2	148.4	250.0 *	250.0 *	250.0 *	13	
	14	77.2	238.0 *	221.1 *	179.5	125.3	238.0 *	238.0 *	238.0 *	14	
	15	76.1	227.1 *	197.4	155.3	108.3	227.1 *	227.1 *	227.1 *	15	
	16	74.9	215.3 *	174.0	136.8	95.3	215.3 *	215.3 *	215.3 *	16	
	17	73.7	201.1	155.5	122.1	84.9	203.3 *	203.3 *	203.3 *	17	
	18	72.5	181.8	140.4	110.2	76.5	192.5 *	192.5 *	192.5 *	18	
	19	71.3	165.8	128.0	100.4	69.5	175.3	182.7 *	182.7 *	19	
	20	70.1	152.3	117.5	92.1	63.7	161.0	173.9 *	173.9 *	20	
	25	63.8	107.8	82.9	64.6	44.3	114.1	140.0 *	140.0 *	25	
	30	57.3	82.9	63.5	49.3	33.5	87.8	110.0	116.4 *	30	
	35	50.1	67.1	51.1	39.5	26.6	71.1	87.3	93.1	35	
	40	42.2	56.0	42.5	32.7	21.7	59.4	72.1	76.9	40	
	50	19.8	41.6	31.3	23.8	15.4	44.2	46.8 *	46.8 *	50	
60' (18.29m)	14	79.4	234.7 *	220.6 *	180.2	126.1	234.7 *	234.7 *	234.7 *	14	
	15	78.4	226.5 *	198.1	156.0	109.0	226.5 *	226.5 *	226.5 *	15	
	16	77.4	214.9 *	174.6	137.4	95.8	214.9 *	214.9 *	214.9 *	16	
	17	76.5	201.7	156.0	122.7	85.4	202.9 *	202.9 *	202.9 *	17	
	18	75.5	182.3	140.9	110.7	77.0	192.2 *	192.2 *	192.2 *	18	
	19	74.5	166.2	128.4	100.8	70.0	175.7	182.5 *	182.5 *	19	
	20	73.5	152.7	117.9	92.5	64.1	161.4	173.7 *	173.7 *	20	
	25	68.4	108.1	83.1	64.9	44.6	114.4	139.6 *	139.6 *	25	
	30	63.2	83.2	63.8	49.6	33.7	88.1	110.3	116.4 *	30	
	35	57.7	67.3	51.4	39.8	26.8	71.3	87.6	93.3	35	
	40	51.9	56.2	42.8	32.9	21.9	59.6	72.3	77.2	40	
	50	38.4	41.9	31.6	24.0	15.6	44.5	53.2	56.8	50	
60	18.1	32.9	24.5	18.4	11.6	35.0	38.5 *	38.5 *	60		
70' (21.34m)	16	79.3	211.2 *	176.0	138.8	97.2	211.2 *	211.2 *	211.2 *	16	
	17	78.4	202.9	157.3	123.9	86.7	203.0 *	203.0 *	203.0 *	17	
	18	77.6	183.4	142.0	111.8	78.1	192.3 *	192.3 *	192.3 *	18	
	19	76.7	167.2	129.4	101.8	71.0	176.8	182.6 *	182.6 *	19	
	20	75.9	153.6	118.8	93.4	65.0	162.4	173.8 *	173.8 *	20	
	25	71.6	108.8	83.8	65.6	45.3	115.1	139.8 *	139.8 *	25	
	30	67.3	83.7	64.3	50.1	34.3	88.6	111.0	116.6 *	30	
	35	62.8	67.7	51.8	40.2	27.2	71.7	88.1	93.9	35	
	40	58.0	56.6	43.2	33.3	22.3	60.0	72.8	77.6	40	
	50	47.8	42.2	31.9	24.4	16.0	44.8	53.5	57.1	50	
60	35.4	33.2	24.8	18.8	11.9	35.3	41.9	44.8	60		
70	16.7	27.0	19.9	14.8	9.1	28.7	34.0	36.4	70		
80' (24.38m)	17	79.9	190.4 *	157.5	124.1	86.9	190.4 *	190.4 *	190.4 *	17	
	18	79.2	183.6	142.2	112.0	78.3	188.0 *	188.0 *	188.0 *	18	
	19	78.4	167.4	129.6	102.0	71.2	176.9	182.0 *	182.0 *	19	
	20	77.7	153.8	119.0	93.5	65.2	162.5	173.3 *	173.3 *	20	
	25	74.0	108.8	83.9	65.7	45.4	115.1	139.5 *	139.5 *	25	
	30	70.2	83.7	64.3	50.1	34.3	88.6	111.1	116.3 *	30	
	35	66.4	67.7	51.8	40.2	27.2	71.7	88.2	93.9	35	
	40	62.4	56.6	43.1	33.3	22.3	60.0	72.8	77.6	40	
	50	54.0	42.2	31.9	24.3	15.9	44.8	53.5	57.2	50	
	60	44.5	33.2	24.8	18.7	11.9	35.3	41.9	44.8	60	
70	33.1	27.0	20.0	14.9	9.2	28.8	34.1	36.5	70		
80	15.6	22.5	16.4	12.0	7.1	24.0	28.4	30.4	80		
90' (27.43m)	19	79.7	167.5	129.7	102.1	71.2	170.7 *	170.7 *	170.7 *	19	
	20	79.1	153.8	119.0	93.6	65.2	162.6	168.5 *	168.5 *	20	
	25	75.8	108.8	83.9	65.7	45.4	115.1	139.0 *	139.0 *	25	
	30	72.5	83.7	64.3	50.1	34.3	88.6	111.1	116.0 *	30	
	35	69.1	67.7	51.8	40.1	27.2	71.7	88.2	93.9	35	
	40	65.7	56.5	43.1	33.2	22.2	59.9	72.8	77.6	40	
	50	58.5	42.1	31.8	24.3	15.8	44.7	53.5	57.1	50	
	60	50.7	33.1	24.8	18.7	11.9	35.2	41.8	44.7	60	
	70	41.8	27.0	20.0	14.8	9.1	28.7	34.0	36.4	70	
	80	31.1	22.5	16.4	12.0	7.1	24.0	28.4	30.4	80	
90	14.7	19.0	13.7	9.8	5.5	20.4	24.1	25.9	90		

[Ⓞ] Requires hammerhead tip.

Boom Length (ft.)	Load Radius (ft.)	Boom Angle (deg.)	Capacity (thousands of lbs.) 360 Degree Rotation					Capacity (thousands of lbs.) Over End - Blocked		Load Radius (ft.)
			"ABC" + 0	"AB" + 0	"A" + 0	No	"ABC +	"ABC" + 0	"ABC +	
			ctwt.	ctwt.	ctwt.	ctwt.	20,000 lb. ctwt.	ctwt.	20,000 lb. ctwt.	
100' (30.48m)	21	79.6	142.2	110.0	86.4	60.1	150.3	154.0 *	154.0 *	21
	25	77.3	108.8	83.9	65.7	45.3	115.1	138.5 *	138.5 *	25
	30	74.3	83.6	64.2	50.0	34.2	88.5	111.1	115.6 *	30
	35	71.3	67.6	51.7	40.0	27.1	71.6	88.1	93.9	35
	40	68.3	56.4	43.0	33.1	22.1	59.8	72.7	77.5	40
	50	61.9	42.0	31.7	24.1	15.7	44.6	53.4	57.0	50
	60	55.2	33.0	24.6	18.5	11.7	35.1	41.7	44.6	60
	70	47.9	26.9	19.8	14.7	9.0	28.6	33.9	36.3	70
	80	39.6	22.4	16.3	11.9	7.0	23.9	28.3	30.4	80
	90	29.5	19.0	13.7	9.8	5.4	20.3	24.0	25.9	90
100	14.0	16.2	11.5	8.0	4.2	17.4	20.7	22.3	100	
110' (33.53m)	23	79.5	123.3	95.2	74.7	51.7	130.4	139.7 *	139.7 *	23
	25	78.4	108.7	83.8	65.6	45.3	115.0	136.2 *	136.2 *	25
	30	75.8	83.5	64.1	49.9	34.1	88.4	111.0	115.1 *	30
	35	73.1	67.4	51.5	39.9	27.0	71.5	88.0	93.8	35
	40	70.3	56.3	42.8	33.0	22.0	59.7	72.6	77.4	40
	50	64.7	41.8	31.5	24.0	15.6	44.4	53.3	56.9	50
	60	58.8	32.8	24.5	18.4	11.6	34.9	41.6	44.5	60
	70	52.4	26.7	19.7	14.6	8.8	28.5	33.8	36.2	70
	80	45.5	22.2	16.2	11.8	6.8	23.8	28.2	30.2	80
	90	37.7	18.9	13.5	9.7	5.3	20.2	23.9	25.7	90
100	28.1	16.2	11.4	8.0	4.1	17.4	20.6	22.2	100	
110	13.3	13.9	9.7	6.5	3.0	15.0	17.9	19.3	110	
120' (36.58m)	24	79.9	115.5	89.1	69.8	48.2	122.2	128.0 *	128.0 *	24
	25	79.4	108.7	83.7	65.5	45.2	114.9	126.8 *	126.8 *	25
	30	77.0	83.4	64.0	49.8	34.0	88.3	111.0	112.5 *	30
	35	74.5	67.3	51.4	39.8	26.8	71.3	87.9	93.7	35
	40	72.0	56.1	42.7	32.8	21.9	59.5	72.5	77.3	40
	50	66.9	41.7	31.4	23.8	15.4	44.3	53.1	56.7	50
	60	61.6	32.7	24.3	18.2	11.4	34.8	41.4	44.3	60
	70	56.0	26.5	19.5	14.4	8.7	28.3	33.6	36.0	70
	80	50.1	22.1	16.0	11.6	6.7	23.6	28.0	30.1	80
	90	43.5	18.7	13.4	9.5	5.2	20.0	23.8	25.6	90
100	36.0	16.0	11.3	7.8	3.9	17.2	20.5	22.1	100	
110	26.9	13.8	9.6	6.4	2.9	14.9	17.8	19.3	110	
120	12.7	12.0	8.1	5.3	2.1	13.0	15.6	16.9	120	
130' (39.62m)	26	79.8	102.4	78.8	61.6	42.4	108.4	116.7 *	116.7 *	26
	30	78.0	83.3	63.9	49.7	33.9	88.2	108.7 *	108.7 *	30
	35	75.7	67.2	51.3	39.7	26.7	71.2	87.8	93.6	35
	40	73.4	56.0	42.5	32.7	21.7	59.4	72.4	77.2	40
	50	68.8	41.5	31.2	23.7	15.2	44.1	53.0	56.6	50
	60	64.0	32.5	24.1	18.0	11.2	34.6	41.3	44.2	60
	70	59.0	26.3	19.3	14.2	8.5	28.1	33.4	35.9	70
	80	53.7	21.9	15.8	11.4	6.5	23.4	27.8	29.9	80
	90	48.0	18.5	13.2	9.3	5.0	19.8	23.6	25.4	90
	100	41.7	15.8	11.1	7.6	3.8	17.0	20.3	21.9	100
110	34.6	13.7	9.4	6.3	2.8	14.8	17.6	19.1	110	
120	25.8	11.9	8.0	5.1	2.1	12.9	15.5	16.8	120	
130	12.2	10.3	6.7	4.1	1.5	11.2	13.6	14.8	130	
140' (42.76m)	28	79.7	91.8	70.5	55.0	37.6	97.2	105.9 *	105.9 *	28
	30	78.9	83.2	63.8	49.6	33.7	88.1	104.3 *	104.3 *	30
	35	76.8	67.0	51.1	39.5	26.5	71.0	87.7	90.8 *	35
	40	74.7	55.8	42.4	32.5	21.5	59.2	72.2	77.1	40
	50	70.4	41.3	31.0	23.5	15.1	43.9	52.8	56.4	50
	60	66.0	32.3	23.9	17.8	11.0	34.4	41.1	44.0	60
	70	61.4	26.1	19.1	14.0	8.3	27.9	33.3	35.7	70
	80	56.6	21.7	15.6	11.2	6.3	23.2	27.6	29.7	80
	90	51.6	18.3	13.0	9.1	4.8	19.6	23.4	25.2	90
	100	46.1	15.6	10.9	7.4	3.6	16.8	20.1	21.7	100
110	40.1	13.5	9.2	6.1	2.6	14.6	17.5	18.9	110	
120	33.3	11.7	7.8	5.0	2.0	12.7	15.3	16.6	120	
130	24.8	10.2	6.6	4.0	1.5	11.1	13.4	14.7	130	
140	11.8	8.9	5.6	3.1	1.1	9.7	11.9	13.0	140	

LS-238H Lift Crane Capacities

Boom Length (ft.)	Load Radius (ft.)	Boom Angle (deg.)	Capacity (thousands of lbs.) 360 Degree Rotation					Capacity (thousands of lbs.) Over End - Blocked		Load Radius (ft.)
			"ABC" + 0	"AB" + 0	"A" + 0	No	"ABC +	"ABC" + 0	"ABC +	
			ctwt.	ctwt.	ctwt.	ctwt.	20,000 lb. ctwt.	ctwt.	20,000 lb. ctwt.	
150' (45.72m)	30	79.6	83.0	63.6	49.4	33.6	87.9	97.0 *	97.0 *	30
	35	77.7	66.9	51.0	39.3	26.4	70.9	87.6	88.7 *	35
	40	75.7	55.6	42.2	32.3	21.4	59.0	72.1	76.9	40
	50	71.7	41.1	30.8	23.3	14.9	43.7	52.6	56.3	50
	60	67.6	32.1	23.7	17.6	10.8	34.2	40.9	43.8	60
	70	63.4	25.9	18.9	13.8	8.1	27.7	33.1	35.5	70
	80	59.1	21.5	15.4	11.0	6.1	23.0	27.4	29.5	80
	90	54.5	18.1	12.8	8.9	4.6	19.4	23.2	25.0	90
	100	49.7	15.4	10.7	7.2	3.4	16.6	19.9	21.5	100
	110	44.5	13.3	9.0	5.9	2.4	14.4	17.3	18.7	110
	120	38.7	11.5	7.6	4.7		12.5	15.1	16.4	120
	130	32.1	10.0	6.4	3.8		10.9	13.3	14.5	130
	140	24.0	8.7	5.4	3.0		9.5	11.7	12.8	140
	150	11.4	7.6	4.5	2.2		8.3	10.3	11.4	150
	160' (48.77m)	31	79.9	79.1	60.5	46.9	31.8	83.8	88.6 *	88.6 *
35		78.4	66.7	50.8	39.2	26.2	70.7	86.0 *	86.0 *	35
40		76.6	55.5	42.0	32.2	21.2	58.9	72.0	75.7 *	40
50		72.9	40.9	30.6	23.1	14.7	43.5	52.5	56.1	50
60		69.1	31.9	23.5	17.4	10.6	34.0	40.7	43.6	60
70		65.2	25.7	18.7	13.6	7.9	27.5	32.9	35.3	70
80		61.2	21.3	15.2	10.8	5.9	22.8	27.2	29.3	80
90		57.0	17.9	12.6	8.7	4.3	19.2	23.0	24.8	90
100		52.7	15.2	10.5	7.0	3.1	16.4	19.7	21.3	100
110		48.0	13.1	8.8	5.7	2.2	14.1	17.1	18.5	110
120		43.0	11.3	7.4	4.5		12.3	14.9	16.2	120
130		37.4	9.8	6.2	3.6		10.7	13.1	14.3	130
140		31.1	8.5	5.2	2.8		9.3	11.5	12.6	140
150		23.2	7.4	4.3	2.1		8.2	10.2	11.2	150
160		11.0	6.4	3.5			7.1	9.0	9.9	160
170' (51.82m)	33	79.8	72.3	55.1	42.6		76.6	81.3 *	81.3 *	33
	35	79.1	66.5	50.6	39.0		70.5	80.1 *	80.1 *	35
	40	77.4	55.3	41.8	32.0		58.7	71.8	73.4 *	40
	50	73.9	40.7	30.4	22.9		43.3	52.3	55.9	50
	60	70.4	31.7	23.3	17.2		33.8	40.5	43.4	60
	70	66.8	25.5	18.5	13.4		27.3	32.7	35.1	70
	80	63.0	21.0	15.0	10.6		22.6	27.0	29.1	80
	90	59.2	17.6	12.3	8.4		19.0	22.8	24.6	90
	100	55.2	15.0	10.2	6.8		16.2	19.5	21.1	100
	110	51.0	12.8	8.5	5.4		13.9	16.8	18.3	110
	120	46.5	11.1	7.2	4.3		12.0	14.7	16.0	120
	130	41.6	9.6	6.0	3.4		10.5	12.8	14.1	130
	140	36.3	8.3	5.0	2.6		9.1	11.3	12.4	140
	150	30.1	7.2	4.1			8.0	10.0	11.0	150
	160	22.5	6.2	3.3			6.9	8.8	9.8	160
170	10.7	5.3	2.6			6.0	7.7	8.5 *	170	
180' (54.86m)	35	79.7	66.4	50.4	38.8		70.4	71.6 *	71.6 *	35
	40	78.1	55.1	41.6	31.8		58.5	71.1 *	71.1 *	40
	50	74.8	40.5	30.2	22.7		43.1	52.1	55.7	50
	60	71.5	31.4	23.1	17.0		33.6	40.3	43.2	60
	70	68.1	25.3	18.3	13.1		27.0	32.4	34.9	70
	80	64.7	20.8	14.8	10.3		22.3	26.8	28.9	80
	90	61.1	17.4	12.1	8.2		18.8	22.6	24.4	90
	100	57.4	14.7	10.0	6.5		15.9	19.3	20.9	100
	110	53.5	12.6	8.3	5.2		13.7	16.6	18.1	110
	120	49.4	10.8	6.9	4.1		11.8	14.4	15.8	120
	130	45.1	9.3	5.8	3.1		10.2	12.6	13.8	130
	140	40.4	8.1	4.8	2.3		8.9	11.1	12.2	140
	150	35.2	7.0	3.9			7.7	9.8	10.8	150
	160	29.3	6.0	3.1			6.7	8.6	9.6	160
	170	21.9	5.2	2.5			5.8	7.6	8.5	170
180	10.4	4.4				5.0	6.6	7.1 *	180	

Boom Length (ft.)	Load Radius (ft.)	Boom Angle (deg.)	Capacity (thousands of lbs.) 360 Degree Rotation					Capacity (thousands of lbs.) Over End - Blocked			Load Radius (ft.)
			"ABC" + 0	"AB" + 0	"A" + 0	No	"ABC +	"ABC" + 0	"ABC +		
			ctwt.	ctwt.	ctwt.	ctwt.	20,000 lb. ctwt.	ctwt.	20,000 lb. ctwt.		
190' (57.91m)	36	80.0	62.7 *	48.3	37.0		62.7 *	62.7 *	62.7 *	36	
	40	78.8	54.9	41.4	31.6		58.3	62.4 *	62.4 *	40	
	50	75.7	40.3	30.0	22.5		42.9	51.9	55.5	50	
	60	72.5	31.2	22.9	16.8		33.3	40.1	43.0	60	
	70	69.3	25.1	18.0	12.9		26.8	32.2	34.6	70	
	80	66.1	20.6	14.5	10.1		22.1	26.6	28.7	80	
	90	62.7	17.2	11.9	8.0		18.5	22.3	24.2	90	
	100	59.3	14.5	9.8	6.3		15.7	19.0	20.6	100	
	110	55.7	12.4	8.1	5.0		13.4	16.4	17.8	110	
	120	52.0	10.6	6.7	3.8		11.6	14.2	15.5	120	
	130	48.0	9.1	5.5	2.9		10.0	12.4	13.6	130	
	140	43.8	7.8	4.5	2.1		8.7	10.9	12.0	140	
	150	39.3	6.7	3.7			7.5	9.5	10.6	150	
	160	34.3	5.8	2.9			6.5	8.4	9.3	160	
170	28.5	4.9	2.2			5.6	7.4	8.3	170		
180	21.3	4.2				4.8	6.4	7.3	180		
190	10.1	3.5				4.1	5.6	5.9 *	190		
200' (60.96m)	38	79.9	55.4 *	44.4			55.4 *	55.4 *	55.4 *	38	
	40	79.3	54.7	41.2			55.4 *	55.4 *	55.4 *	40	
	50	76.4	40.1	29.8			42.7	51.3 *	51.3 *	50	
	60	73.4	31.0	22.7			33.1	39.9	42.8	60	
	70	70.4	24.8	17.8			26.6	32.0	34.4	70	
	80	67.3	20.3	14.3			21.9	26.4	28.4	80	
	90	64.2	16.9	11.6			18.3	22.1	23.9	90	
	100	61.0	14.3	9.5			15.5	18.8	20.4	100	
	110	57.6	12.1	7.8			13.2	16.1	17.6	110	
	120	54.2	10.3	6.4			11.3	14.0	15.3	120	
	130	50.6	8.9	5.3			9.8	12.2	13.4	130	
	140	46.7	7.6	4.3			8.4	10.6	11.7	140	
	150	42.7	6.5	3.4			7.3	9.3	10.3	150	
	160	38.3	5.5	2.7			6.3	8.1	9.1	160	
170	33.4	4.7	2.0			5.4	7.1	8.0	170		
180	27.7	4.0				4.6	6.2	7.1	180		
190	20.7	3.3				3.9	5.4	6.2	190		
200	9.9	2.6				3.2	4.7	4.7 *	200		
210' (64.01m)	40	79.8	49.3 *	41.0			49.3 *	49.3 *	49.3 *	40	
	50	77.1	39.9	29.6			42.5	45.6 *	45.6 *	50	
	60	74.2	30.8	22.4			32.9	39.7	40.4 *	60	
	70	71.4	24.6	17.6			26.4	31.8	34.2	70	
	80	68.5	20.1	14.1			21.6	26.1	28.2	80	
	90	65.5	16.7	11.4			18.0	21.9	23.7	90	
	100	62.5	14.0	9.3			15.2	18.6	20.2	100	
	110	59.4	11.9	7.6			13.0	15.9	17.4	110	
	120	56.1	10.1	6.2			11.1	13.7	15.1	120	
	130	52.8	8.6	5.0			9.5	11.9	13.1	130	
	140	49.3	7.3	4.0			8.2	10.4	11.5	140	
	150	45.6	6.3	3.2			7.0	9.1	10.1	150	
	160	41.6	5.3	2.4			6.0	7.9	8.9	160	
	170	37.3	4.5				5.1	6.9	7.8	170	
180	32.5	3.7				4.4	6.0	6.8	180		
190	27.0	3.1				3.7	5.2	6.0	190		
200	20.2	2.4				3.0	4.5	5.2	200		
210	9.6					2.4	3.6 *	3.6 *	210		

LS-238H Lift Crane Capacities

Boom Length (ft.)	Load Radius (ft.)	Boom Angle (deg.)	Capacity (thousands of lbs.) 360 Degree Rotation					Capacity (thousands of lbs.) Over End - Blocked			Load Radius (ft.)
			"ABC" + 0	"AB" + 0	"A" + 0	No	"ABC +	"ABC" + 0	"ABC +		
			ctwt.	ctwt.	ctwt.	ctwt.	20,000 lb. ctwt.	ctwt.	20,000 lb. ctwt.		
220' (67.06m)	42	79.8	43.3 *	38.0			43.3 *	43.3 *	43.3 *	42	
	50	77.7	39.6	29.3			40.3 *	40.3 *	40.3 *	50	
	60	75.0	30.5	22.2			32.7	36.3 *	36.3 *	60	
	70	72.3	24.4	17.3			26.1	31.6	32.2 *	70	
	80	69.5	19.9	13.8			21.4	25.9	28.0	80	
	90	66.7	16.5	11.1			17.8	21.6	23.5	90	
	100	63.8	13.8	9.0			15.0	18.3	19.9	100	
	110	60.9	11.6	7.3			12.7	15.7	17.1	110	
	120	57.9	9.9	6.0			10.8	13.5	14.8	120	
	130	54.7	8.4	4.8			9.3	11.7	12.9	130	
	140	51.5	7.1	3.8			7.9	10.1	11.2	140	
	150	48.1	6.0	2.9			6.8	8.8	9.8	150	
	160	44.5	5.1	2.2			5.8	7.7	8.6	160	
	170	40.6	4.2				4.9	6.6	7.6	170	
180	36.4	3.5				4.1	5.7	6.6	180		
190	31.8	2.8				3.4	4.9	5.8	190		
200	26.4	2.2				2.8	4.2	5.0	200		
210	19.8					2.2	3.6	4.1 *	210		
220	9.4						2.6 *	2.6 *	220		
230' (70.10m)	43	80.0	38.7 *				38.7 *	38.7 *	38.7 *	43	
	50	78.2	36.1 *				36.1 *	36.1 *	36.1 *	50	
	60	75.6	30.3				32.4	32.5 *	32.5 *	60	
	70	73.1	24.1				25.9	28.8 *	28.8 *	70	
	80	70.4	19.6				21.1	25.7	25.7 *	80	
	90	67.8	16.2				17.6	21.4	22.5 *	90	
	100	65.0	13.5				14.7	18.1	19.7	100	
	110	62.3	11.4				12.5	15.4	16.9	110	
	120	59.4	9.6				10.6	13.2	14.6	120	
	130	56.5	8.1				9.0	11.4	12.6	130	
	140	53.4	6.8				7.7	9.9	11.0	140	
	150	50.3	5.8				6.5	8.6	9.6	150	
	160	46.9	4.8				5.5	7.4	8.4	160	
	170	43.4	4.0				4.6	6.4	7.3	170	
180	39.7	3.2				3.9	5.5	6.4	180		
190	35.6	2.6				3.2	4.7	5.5 *	190		
200	31.0	2.0				2.5	4.0	4.0 *	200		
210	25.8					2.0	3.3	2.6 *	210		
220	19.3						2.7		220		
230	9.2								230		
240' (73.15m)	45	79.9	34.0 *				34.0 *	34.0 *	34.0 *	45	
	50	78.7	32.3 *				32.3 *	32.3 *	32.3 *	50	
	60	76.2	29.1 *				29.1 *	29.1 *	29.1 *	60	
	70	73.8	23.9				25.6	25.8 *	25.8 *	70	
	80	71.3	19.4				20.9	22.4 *	22.4 *	80	
	90	68.7	16.0				17.3	20.0 *	20.0 *	90	
	100	66.1	13.3				14.5	17.8	17.9 *	100	
	110	63.5	11.1				12.2	15.2	16.1 *	110	
	120	60.8	9.3				10.3	13.0	14.3	120	
	130	58.0	7.9				8.8	11.2	12.4 *	130	
	140	55.2	6.6				7.4	9.6	10.6 *	140	
	150	52.2	5.5				6.3	8.3	9.1 *	150	
	160	49.1	4.6				5.3	7.2	7.7 *	160	
	170	45.9	3.7				4.4	6.1	6.5 *	170	
180	42.5	3.0				3.6	5.3	5.5 *	180		
190	38.8	2.3				2.9	4.5	4.0 *	190		
200	34.8					2.3	3.6 *	2.6 *	200		
210	30.4						2.8 *		210		
220	25.3						2.1 *		220		
230	18.9								230		
240	9.0								240		

LS-238H Lift Crane Capacity Notes

General:

1. Rated lifting capacities in pounds as shown on lift charts pertain to the crane as originally manufactured and normally equipped. Modifications to the crane or use of optional equipment other than that specified can result in a reduction of capacity.
2. Construction equipment can be dangerous if improperly operated or maintained. Operation and maintenance of the crane must be in compliance with the information in the Operator's, Parts and Safety Manuals supplied with the crane. If these manuals are missing, order replacements through the distributor.
3. The operator and other personnel associated with the crane shall read and fully understand the latest applicable American National Standards Institute (ANSI) safety standards for cranes.
4. The maximum allowable lifting capacities are based on crane standing level on firm supporting surface.
5. All capacities listed are in compliance with ASME/ANSI B30.5b-1994, SAE J987-April 1991, and SAE J765-October 1990.

Set-Up:

1. The crane shall be leveled on a firm supporting surface. Depending on the nature of the supporting surface, it may be necessary to have structural supports under the crawler side frames to spread the load to a larger bearing surface.
2. For required parts of line, see wire rope strength and winch performance tables in Crane Rating Manual.

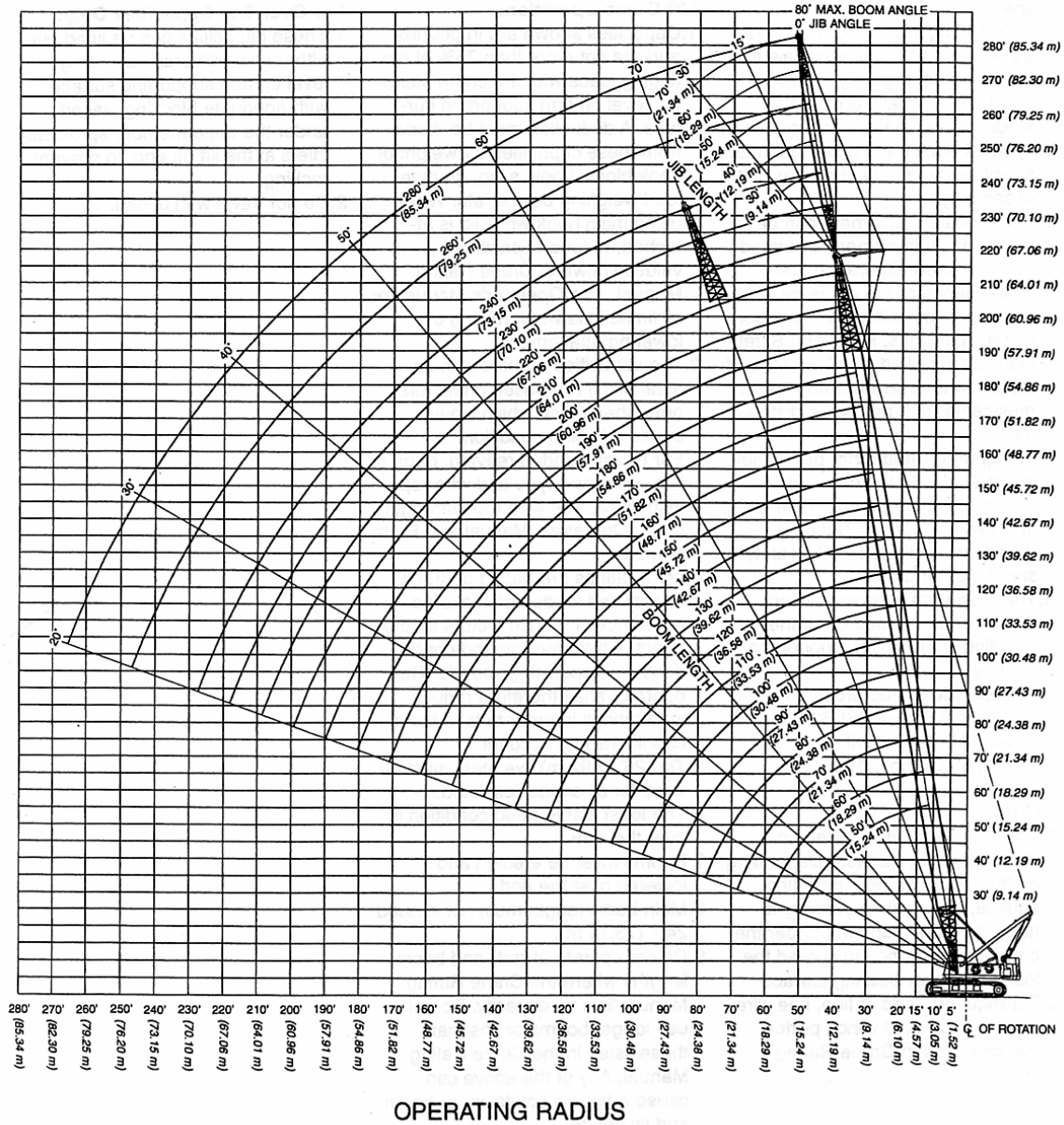
Lift Crane Operation:

1. Capacities shown are in pounds and are not more than 75% of the tipping loads with the crane standing level on firm supporting surface. A deduction must be made from these capacities for weight of hook block, hook, sling, grapple, load weighing device, etc. When using main hook while jib is attached, reduce capacities by values shown in Crane Rating Manual. See Operator's Manual for all limitations when raising or lowering attachment.
2. The capacities marked with an asterisk (*) are based on factors other than those which would cause a tipping condition.
3. For recommended reeving, parts of line, wire rope type and wire rope inspection, see wire rope strength chart, Operator's Manual and Parts Manual.
4. Load ratings are based on freely suspended loads and make no allowances for such factors as the effect of the wind, ground conditions, and operating speeds. The operator shall therefore reduce load ratings in order to take these conditions into account.
5. The 26' (7.92 m) live mast must be used for all capacities listed.
6. The least stable rated condition is over the side.
7. Booms must be erected and lowered over the end.
8. Main boom length must not exceed 240' (73.15 m).
9. Do not operate at radii and boom lengths where the Crane Rating Manual lists no capacity. Do not use longer booms or jibs than those listed in the Crane Rating Manual. Any of the above can cause a tipping condition, or boom and jib failure.
10. These capacities apply only to the crane as originally manufactured and normally equipped by Link-Belt Construction Equipment Company.

For Over End Capacities Only:

1. These capacities can be lifted over either end with crane standing level on firm supporting surface with adequate blocking placed under the tread member sprockets/idlers at the lift off end, to prevent rocking.
2. Do not travel with a load.

LS-238H Working Range



Link-Belt Construction Equipment Company Lexington, Kentucky

A unit of Sumitomo Construction Machinery Co., Ltd.

© Link-Belt is a registered trademark. Copyright 1996. All rights reserved. We are constantly improving our products and therefore reserve the right to change designs and specifications.

LS-238H Tubular Jib Capacities

Capacities shown in thousands of pounds

62" x 70" (1.57 x 1.78 m) Tube Boom - 30" x 36" (.75 x .91 m) Tube Jib - 360° Rotation

Boom Length (feet)	Jib Length (feet)	Jib Load Radius (feet)	Jib Angle to Boom													
			0 Degrees				15 Degrees				30 Degrees					
			Boom Angle (deg)	Jib Pt. Height (feet)	ABC+ 20,000# Ctw.	ABC+0 Ctw.	Boom Angle (deg)	Jib Pt. Height (feet)	ABC+ 20,000# Ctw.	ABC+0 Ctw.	Boom Angle (deg)	Jib Pt. Height (feet)	ABC+ 20,000# Ctw.	ABC+0 Ctw.		
50	30	17	79.9	85.6	30.0*	30.0*										
50	30	18	79.2	85.4	29.8*	29.8*										
50	30	19	78.4	85.2	29.6*	29.6*										
50	30	20	77.7	84.9	29.4*	29.4*										
50	30	25	74.0	83.7	28.3*	28.3*	79.5	83.6	26.4*	26.4*						
50	30	30	70.2	82.0	27.2*	27.2*	75.7	82.0	25.4*	25.4*						
50	30	35	66.4	80.0	26.1*	26.1*	71.8	80.1	24.3*	24.3*	76.7	78.7	21.3*	21.3*		
50	30	40	62.4	77.6	25.0*	25.0*	67.8	77.7	23.3*	23.3*	72.6	76.3	19.7*	19.7*		
50	30	50	54.0	71.3	22.8*	22.8*	59.3	71.6	20.5*	20.5*	63.8	70.0	17.0*	17.0*		
50	30	60	44.5	62.7	19.4*	19.4*	49.7	63.0	16.7*	16.7*	53.7	61.1	15.2*	15.2*		
50	30	70	33.1	50.2	15.8*	15.8*	38.0	50.4	15.3*	15.3*						
50	40	19	79.7	95.2	26.7*	26.7*										
50	40	20	79.1	95.0	26.5*	26.5*										
50	40	25	75.8	93.8	25.6*	25.6*										
50	40	30	72.5	92.3	24.7*	24.7*	79.0	92.2	23.3*	23.3*						
50	40	35	69.1	90.5	23.8*	23.8*	75.6	90.5	21.8*	21.8*						
50	40	40	65.7	88.3	22.7*	22.7*	72.1	88.5	20.3*	20.3*	78.1	86.8	17.0*	17.0*		
50	40	50	58.5	82.9	19.5*	19.5*	64.8	83.2	17.1*	17.1*	70.5	81.5	14.5*	14.5*		
50	40	60	50.7	75.6	16.3*	16.3*	56.9	76.1	14.5*	14.5*	62.3	74.1	12.0*	12.0*		
50	40	70	41.8	65.9	13.5*	13.5*	48.0	66.4	11.8*	11.8*	52.9	64.0	10.9*	10.9*		
50	40	80	31.1	52.2	11.3*	11.3*	37.0	52.6	10.6*	10.6*						
50	50	25	77.3	104.0	23.3*	23.3*										
50	50	30	74.3	102.7	22.5*	22.5*										
50	50	35	71.3	101.1	21.7*	21.7*	78.6	101.1	20.4*	20.4*						
50	50	40	68.3	99.2	20.9*	20.9*	75.6	99.3	18.8*	18.8*						
50	50	50	61.9	94.4	17.9*	17.9*	69.2	94.7	15.3*	15.3*	75.9	92.9	12.0*	12.0*		
50	50	60	55.2	88.1	14.2*	14.2*	62.4	88.6	12.0*	12.0*	68.8	86.7	10.2*	10.2*		
50	50	70	47.9	80.0	11.4*	11.4*	54.9	80.7	10.1*	10.1*	61.0	78.5	8.4*	8.4*		
50	50	80	39.6	69.4	9.3*	9.3*	46.5	70.1	8.3*	8.3*	52.1	67.4	7.5*	7.5*		
50	50	90	29.5	54.7	7.8*	7.8*	36.1	55.3	7.2*	7.2*						
50	60	25	78.4	114.4	21.2*	21.2*										
50	60	30	75.8	113.2	20.5*	20.5*										
50	60	35	73.1	111.7	19.8*	19.8*										
50	60	40	70.3	110.0	19.1*	19.1*	78.3	110.3	18.0*	18.0*						
50	60	50	64.7	105.8	17.1*	17.1*	72.6	106.3	14.6*	14.6*						
50	60	60	58.8	100.3	13.5*	13.5*	66.6	101.0	11.0*	11.0*	73.9	99.1	8.4*	8.4*		
50	60	70	52.4	93.4	9.7*	9.7*	60.3	94.2	8.4*	8.4*	67.3	92.2	7.1*	7.1*		
50	60	80	45.5	84.5	7.8*	7.8*	53.2	85.6	7.0*	7.0*	59.9	83.2	5.8*	5.8*		
50	60	90	37.7	73.2	6.3*	6.3*	45.2	74.2	5.8*	5.8*	51.4	71.2	5.3*	5.3*		
50	60	100	28.1	57.6	5.4*	5.4*	35.3	58.4	5.1*	5.1*						
50	70	25	79.4	124.8	18.8*	18.8*										
50	70	30	77.0	123.8	18.1*	18.1*										
50	70	35	74.5	122.5	17.5*	17.5*										
50	70	40	72.0	121.0	16.8*	16.8*										
50	70	50	66.9	117.2	15.4*	15.4*	75.5	117.8	14.2*	14.2*						
50	70	60	61.6	112.4	13.3*	13.3*	70.1	113.2	11.7*	11.7*	78.1	111.4	9.2*	9.2*		

LS-238H Tubular Jib Capacities

Capacities shown in thousands of pounds

Boom Length (feet)	Jib Length (feet)	Jib Load Radius (feet)	Jib Angle to Boom											
			0 Degrees				15 Degrees				30 Degrees			
			Boom Angle (deg)	Jib Pt. Height (feet)	ABC+ 20,000# Ctwt.	ABC+0 Ctwt.	Boom Angle (deg)	Jib Pt. Height (feet)	ABC+ 20,000# Ctwt.	ABC+0 Ctwt.	Boom Angle (deg)	Jib Pt. Height (feet)	ABC+ 20,000# Ctwt.	ABC+0 Ctwt.
50	70	70	56.0	106.3	10.7*	10.7*	64.5	107.4	9.0*	9.0*	72.3	105.5	7.3*	7.3*
50	70	80	50.1	98.8	7.9*	7.9*	58.4	100.0	7.2*	7.2*	65.9	98.0	6.0*	6.0*
50	70	90	43.5	89.4	6.6*	6.6*	51.7	90.8	5.9*	5.9*	58.9	88.3	4.8*	4.8*
50	70	100	36.0	77.3	5.1*	5.1*	44.1	78.7	4.7*	4.7*	50.8	75.6	4.3*	4.3*
50	70	110	26.9	61.0	4.4*	4.4*	34.7	62.1	4.1*	4.1*				
60	30	19	79.7	95.4	29.9*	29.9*								
60	30	20	79.1	95.2	29.8*	29.8*								
60	30	25	75.8	94.0	28.8*	28.8*								
60	30	30	72.5	92.6	27.9*	27.9*	77.4	92.5	25.8*	25.8*				
60	30	35	69.1	90.8	26.9*	26.9*	74.0	90.8	24.9*	24.9*	78.4	89.3	21.9*	21.9*
60	30	40	65.7	88.7	25.9*	25.9*	70.5	88.8	24.0*	24.0*	74.8	87.3	20.3*	20.3*
60	30	50	58.5	83.4	24.0*	24.0*	63.2	83.5	22.0*	22.0*	67.3	82.0	17.8*	17.8*
60	30	60	50.7	76.2	21.9*	21.9*	55.3	76.5	18.9*	18.9*	59.1	74.7	15.8*	15.8*
60	30	70	41.8	66.6	18.4*	18.4*	46.3	66.8	15.9*	15.9*	49.7	64.6	14.6*	14.6*
60	30	80	31.1	53.0	15.6*	15.6*	35.4	53.1	15.1*	15.1*				
60	40	25	77.3	104.1	26.0*	26.0*								
60	40	30	74.3	102.8	25.2*	25.2*								
60	40	35	71.3	101.2	24.4*	24.4*	77.1	101.1	22.5*	22.5*				
60	40	40	68.3	99.3	23.6*	23.6*	74.1	99.3	21.1*	21.1*	79.4	97.4	17.6*	17.6*
60	40	50	61.9	94.5	21.1*	21.1*	67.7	94.6	18.3*	18.3*	72.8	92.8	15.3*	15.3*
60	40	60	55.2	88.2	18.1*	18.1*	60.9	88.5	15.7*	15.7*	65.8	86.5	13.1*	13.1*
60	40	70	47.9	80.2	15.4*	15.4*	53.5	80.5	13.4*	13.4*	58.1	78.3	11.5*	11.5*
60	40	80	39.6	69.6	12.8*	12.8*	45.0	70.0	11.5*	11.5*	49.1	67.2	10.5*	10.5*
60	40	90	29.5	54.9	11.1*	11.1*	34.6	55.1	10.3*	10.3*				
60	50	25	78.4	114.3	23.7*	23.7*								
60	50	30	75.8	113.1	22.9*	22.9*								
60	50	35	73.1	111.6	22.2*	22.2*	79.7	111.6	20.8*	20.8*				
60	50	40	70.3	109.9	21.5*	21.5*	77.0	109.9	19.5*	19.5*				
60	50	50	64.7	105.6	19.4*	19.4*	71.3	105.8	16.4*	16.4*	77.3	103.8	12.4*	12.4*
60	50	60	58.8	100.1	16.1*	16.1*	65.3	100.5	13.1*	13.1*	71.1	98.4	10.8*	10.8*
60	50	70	52.4	93.1	12.7*	12.7*	58.9	93.6	11.1*	11.1*	64.5	91.3	9.1*	9.1*
60	50	80	45.5	84.3	10.8*	10.8*	51.9	84.9	9.3*	9.3*	57.1	82.3	8.0*	8.0*
60	50	90	37.7	72.9	8.8*	8.8*	43.9	73.5	8.0*	8.0*	48.6	70.2	7.1*	7.1*
60	50	100	28.1	57.3	7.6*	7.6*	34.0	57.6	7.0*	7.0*				
60	60	25	79.4	124.6	21.5*	21.5*								
60	60	30	77.0	123.5	20.8*	20.8*								
60	60	35	74.5	122.2	20.2*	20.2*								
60	60	40	72.0	120.6	19.5*	19.5*	79.4	120.7	18.3*	18.3*				
60	60	50	66.9	116.8	18.2*	18.2*	74.2	117.1	15.6*	15.6*				
60	60	60	61.6	111.9	15.2*	15.2*	68.8	112.4	12.4*	12.4*	75.5	110.3	8.8*	8.8*
60	60	70	56.0	105.7	11.9*	11.9*	63.2	106.4	9.0*	9.0*	69.7	104.2	7.6*	7.6*
60	60	80	50.1	98.1	8.7*	8.7*	57.1	98.9	7.7*	7.7*	63.3	96.5	6.3*	6.3*
60	60	90	43.5	88.6	7.4*	7.4*	50.5	89.5	6.4*	6.4*	56.3	86.7	5.6*	5.6*
60	60	100	36.0	76.5	5.9*	5.9*	42.8	77.4	5.6*	5.6*	48.1	73.7	5.1*	5.1*
60	60	110	26.9	60.0	5.3*	5.3*	33.4	60.6	5.0*	5.0*				

Boom Length (feet)	Jib Length (feet)	Jib Load Radius (feet)	Jib Angle to Boom													
			0 Degrees				15 Degrees				30 Degrees					
			Boom Angle (deg)	Jib Pt. Height (feet)	ABC+ 20,000# Ctwt.	ABC+0 Ctwt.	Boom Angle (deg)	Jib Pt. Height (feet)	ABC+ 20,000# Ctwt.	ABC+0 Ctwt.	Boom Angle (deg)	Jib Pt. Height (feet)	ABC+ 20,000# Ctwt.	ABC+0 Ctwt.		
60	70	30	78.0	134.0	18.4*	18.4*										
60	70	35	75.7	132.8	17.8*	17.8*										
60	70	40	73.4	131.4	17.2*	17.2*										
60	70	50	68.8	128.0	15.9*	15.9*	76.7	128.5	14.7*	14.7*						
60	70	60	64.0	123.6	14.4*	14.4*	71.8	124.3	12.5*	12.5*	79.2	122.2	9.6*	9.6*		
60	70	70	59.0	118.2	12.1*	12.1*	66.7	119.0	10.1*	10.1*	73.9	116.9	7.6*	7.6*		
60	70	80	53.7	111.5	9.6*	9.6*	61.4	112.5	7.8*	7.8*	68.3	110.3	6.5*	6.5*		
60	70	90	48.0	103.3	7.5*	7.5*	55.6	104.5	6.6*	6.6*	62.3	102.0	5.3*	5.3*		
60	70	100	41.7	93.3	6.3*	6.3*	49.2	94.5	5.4*	5.4*	55.6	91.5	4.6*	4.6*		
60	70	110	34.6	80.5	4.9*	4.9*	41.9	81.7	4.6*	4.6*	47.7	77.8	4.1*	4.1*		
60	70	120	25.8	63.3	4.3*	4.3*	32.8	64.1	4.0*	4.0*						
70	30	25	77.3	104.3	29.2*	29.2*										
70	30	30	74.3	103.0	28.4*	28.4*	78.7	102.9	26.2*	26.2*						
70	30	35	71.3	101.5	27.5*	27.5*	75.7	101.4	25.4*	25.4*	79.6	99.8	22.4*	22.4*		
70	30	40	68.3	99.6	26.7*	26.7*	72.6	99.6	24.5*	24.5*	76.5	98.0	20.9*	20.9*		
70	30	50	61.9	94.9	24.9*	24.9*	66.2	95.0	22.8*	22.8*	69.9	93.4	18.5*	18.5*		
70	30	60	55.2	88.8	23.1*	23.1*	59.4	88.9	20.6*	20.6*	62.9	87.2	16.7*	16.7*		
70	30	70	47.9	80.8	20.8*	20.8*	52.0	81.0	17.6*	17.6*	55.2	79.0	15.3*	15.3*		
70	30	80	39.6	70.3	17.5*	17.5*	43.6	70.5	15.7*	15.7*	46.4	68.0	14.2*	14.2*		
70	30	90	29.5	55.7	15.5*	15.5*	33.2	55.7	15.0*	15.0*						
70	40	25	78.4	114.4	26.3*	26.3*										
70	40	30	75.8	113.2	25.6*	25.6*										
70	40	35	73.1	111.7	24.9*	24.9*	78.4	111.5	23.0*	23.0*						
70	40	40	70.3	110.0	24.2*	24.2*	75.6	109.9	21.8*	21.8*						
70	40	50	64.7	105.7	22.3*	22.3*	69.9	105.8	19.3*	19.3*	74.6	103.8	15.8*	15.8*		
70	40	60	58.8	100.2	19.7*	19.7*	63.9	100.4	16.6*	16.6*	68.4	98.3	13.9*	13.9*		
70	40	70	52.4	93.3	16.9*	16.9*	57.5	93.5	14.6*	14.6*	61.8	91.3	11.9*	11.9*		
70	40	80	45.5	84.4	14.7*	14.7*	50.5	84.8	12.5*	12.5*	54.5	82.2	11.1*	11.1*		
70	40	90	37.7	73.1	12.2*	12.2*	42.5	73.4	11.2*	11.2*						
70	40	100	28.1	57.5	11.0*	11.0*										
70	50	25	79.4	124.5	23.9*	23.9*										
70	50	30	77.0	123.4	23.3*	23.3*										
70	50	35	74.5	122.1	22.6*	22.6*										
70	50	40	72.0	120.5	21.9*	21.9*	78.1	120.4	20.1*	20.1*						
70	50	50	66.9	116.6	20.6*	20.6*	73.0	116.7	17.3*	17.3*	78.5	114.5	13.1*	13.1*		
70	50	60	61.6	111.7	17.7*	17.7*	67.6	111.9	14.4*	14.4*	73.0	109.7	11.3*	11.3*		
70	50	70	56.0	105.5	14.7*	14.7*	62.0	105.9	11.9*	11.9*	67.1	103.5	9.8*	9.8*		
70	50	80	50.1	97.8	11.9*	11.9*	55.9	98.3	10.3*	10.3*	60.8	95.7	8.4*	8.4*		
70	50	90	43.5	88.3	10.2*	10.2*	49.2	88.9	8.6*	8.6*	53.8	85.8	7.7*	7.7*		
70	50	100	36.0	76.2	8.5*	8.5*	41.6	76.6	7.8*	7.8*						
70	50	110	26.9	59.7	7.5*	7.5*										
70	60	30	78.0	133.8	21.1*	21.1*										
70	60	35	75.7	132.6	20.5*	20.5*										
70	60	40	73.4	131.1	19.9*	19.9*										
70	60	50	68.8	127.6	18.7*	18.7*	75.5	127.8	16.4*	16.4*						
70	60	60	64.0	123.2	16.7*	16.7*	70.7	123.5	13.4*	13.4*	76.8	121.2	9.1*	9.1*		

LS-238H Tubular Jib Capacities

Capacities shown in thousands of pounds

Boom Length (feet)	Jib Length (feet)	Jib Load Radius (feet)	Jib Angle to Boom											
			0 Degrees				15 Degrees				30 Degrees			
			Boom Angle (deg)	Jib Pt. Height (feet)	ABC+ 20,000# Ctw.	ABC+0 Ctw.	Boom Angle (deg)	Jib Pt. Height (feet)	ABC+ 20,000# Ctw.	ABC+0 Ctw.	Boom Angle (deg)	Jib Pt. Height (feet)	ABC+ 20,000# Ctw.	ABC+0 Ctw.
70	60	70	59.0	117.6	13.6*	13.6*	65.6	118.2	10.4*	10.4*	71.6	115.8	8.0*	8.0*
70	60	80	53.7	110.9	10.5*	10.5*	60.2	111.5	8.4*	8.4*	66.0	109.0	6.8*	6.8*
70	60	90	48.0	102.6	8.3*	8.3*	54.4	103.4	7.2*	7.2*	59.9	100.5	5.8*	5.8*
70	60	100	41.7	92.5	7.1*	7.1*	48.1	93.3	5.9*	5.9*	53.2	89.9	5.4*	5.4*
70	60	110	34.6	79.7	5.8*	5.8*	40.8	80.4	5.5*	5.5*				
70	60	120	25.8	62.4	5.3*	5.3*								
70	70	30	78.9	144.2	18.6*	18.6*								
70	70	35	76.8	143.1	18.1*	18.1*								
70	70	40	74.7	141.8	17.5*	17.5*								
70	70	50	70.4	138.7	16.3*	16.3*	77.7	139.0	15.1*	15.1*				
70	70	60	66.0	134.7	15.2*	15.2*	73.2	135.2	13.1*	13.1*				
70	70	70	61.4	129.7	13.2*	13.2*	68.6	130.4	11.0*	11.0*	75.3	128.0	7.9*	7.9*
70	70	80	56.6	123.7	11.0*	11.0*	63.8	124.6	8.7*	8.7*	70.3	122.1	6.9*	6.9*
70	70	90	51.6	116.4	8.6*	8.6*	58.7	117.5	7.3*	7.3*	64.9	114.8	5.8*	5.8*
70	70	100	46.1	107.7	7.1*	7.1*	53.1	108.8	6.1*	6.1*	59.1	105.8	4.9*	4.9*
70	70	110	40.1	97.0	6.0*	6.0*	47.0	98.1	4.9*	4.9*	52.7	94.5	4.4*	4.4*
70	70	120	33.3	83.6	4.8*	4.8*	40.0	84.6	4.5*	4.5*				
70	70	130	24.8	65.6	4.3*	4.3*								
80	30	25	78.4	114.6	29.6*	29.6*								
80	30	30	75.8	113.4	28.8*	28.8*	79.7	113.2	26.5*	26.5*				
80	30	35	73.1	112.0	28.0*	28.0*	77.0	111.8	25.7*	25.7*				
80	30	40	70.3	110.3	27.2*	27.2*	74.3	110.2	25.0*	25.0*	77.8	108.6	21.4*	21.4*
80	30	50	64.7	106.1	25.7*	25.7*	68.6	106.1	23.5*	23.5*	72.0	104.5	19.1*	19.1*
80	30	60	58.8	100.7	24.1*	24.1*	62.6	100.8	21.9*	21.9*	65.8	99.0	17.3*	17.3*
80	30	70	52.4	93.8	22.4*	22.4*	56.2	94.0	19.3*	19.3*	59.3	92.0	15.8*	15.8*
80	30	80	45.5	85.1	19.8*	19.8*	49.2	85.3	16.5*	16.5*	52.0	83.0	14.8*	14.8*
80	30	90	37.7	73.8	16.7*	16.7*	41.3	73.9	15.5*	15.5*				
80	30	100	28.1	58.3	15.4*	15.4*								
80	40	25	79.4	124.6	26.6*	26.6*								
80	40	30	77.0	123.5	25.9*	25.9*								
80	40	35	74.5	122.1	25.3*	25.3*	79.4	121.9	23.4*	23.4*				
80	40	40	72.0	120.6	24.6*	24.6*	76.9	120.4	22.3*	22.3*				
80	40	50	66.9	116.7	23.3*	23.3*	71.7	116.7	20.1*	20.1*	76.0	114.6	16.2*	16.2*
80	40	60	61.6	111.8	20.9*	20.9*	66.4	111.9	17.7*	17.7*	70.5	109.7	14.5*	14.5*
80	40	70	56.0	105.6	18.5*	18.5*	60.7	105.8	15.6*	15.6*	64.7	103.5	12.7*	12.7*
80	40	80	50.1	98.0	16.1*	16.1*	54.7	98.3	13.8*	13.8*	58.4	95.8	11.5*	11.5*
80	40	90	43.5	88.5	14.0*	14.0*	48.0	88.8	11.8*	11.8*	51.5	85.9	10.7*	10.7*
80	40	100	36.0	76.4	11.9*	11.9*	40.4	76.6	11.0*	11.0*				
80	40	110	26.9	59.9	10.8*	10.8*								
80	50	30	78.0	133.7	23.5*	23.5*								
80	50	35	75.7	132.5	22.9*	22.9*								
80	50	40	73.4	131.0	22.3*	22.3*	79.1	130.8	20.6*	20.6*				
80	50	50	68.8	127.5	21.1*	21.1*	74.4	127.4	18.1*	18.1*	79.5	125.1	13.6*	13.6*
80	50	60	64.0	123.0	19.0*	19.0*	69.5	123.1	15.4*	15.4*	74.5	120.7	11.7*	11.7*
80	50	70	59.0	117.4	16.3*	16.3*	64.4	117.7	12.7*	12.7*	69.3	115.2	10.3*	10.3*
80	50	80	53.7	110.6	13.4*	13.4*	59.1	111.0	11.1*	11.1*	63.7	108.4	8.9*	8.9*

Boom Length (feet)	Jib Length (feet)	Jib Load Radius (feet)	Jib Angle to Boom											
			0 Degrees				15 Degrees				30 Degrees			
			Boom Angle (deg)	Jib Pt. Height (feet)	ABC+ 20,000# Ctw.	ABC+0 Ctw.	Boom Angle (deg)	Jib Pt. Height (feet)	ABC+ 20,000# Ctw.	ABC+0 Ctw.	Boom Angle (deg)	Jib Pt. Height (feet)	ABC+ 20,000# Ctw.	ABC+0 Ctw.
80	50	90	48.0	102.4	11.4*	11.4*	53.3	102.8	9.7*	9.7*	57.7	99.9	8.1*	8.1*
80	50	100	41.7	92.2	9.8*	9.8*	46.9	92.6	8.3*	8.3*	51.0	89.2	7.4*	7.4*
80	50	110	34.6	79.3	8.3*	8.3*	39.6	79.7	7.6*	7.6*				
80	50	120	25.8	62.0	7.4*	7.4*								
80	60	30	78.9	144.0	21.3*	21.3*								
80	60	35	76.8	142.9	20.8*	20.8*								
80	60	40	74.7	141.6	20.2*	20.2*								
80	60	50	70.4	138.3	19.1*	19.1*	76.6	138.4	17.0*	17.0*				
80	60	60	66.0	134.2	17.8*	17.8*	72.2	134.5	14.3*	14.3*	77.9	132.0	9.8*	9.8*
80	60	70	61.4	129.2	15.1*	15.1*	67.5	129.6	11.6*	11.6*	73.1	127.0	8.3*	8.3*
80	60	80	56.6	123.1	12.2*	12.2*	62.7	123.6	8.9*	8.9*	68.1	121.0	7.3*	7.3*
80	60	90	51.6	115.8	9.2*	9.2*	57.6	116.4	7.8*	7.8*	62.8	113.5	6.2*	6.2*
80	60	100	46.1	107.0	7.9*	7.9*	52.1	107.7	6.7*	6.7*	57.0	104.4	5.7*	5.7*
80	60	110	40.1	96.2	6.7*	6.7*	46.0	96.9	5.8*	5.8*	50.5	93.1	5.2*	5.2*
80	60	120	33.3	82.7	5.8*	5.8*	39.0	83.3	5.3*	5.3*				
80	60	130	24.8	64.6	5.2*	5.2*								
80	70	30	79.6	154.4	18.8*	18.8*								
80	70	35	77.7	153.4	18.3*	18.3*								
80	70	40	75.7	152.2	17.8*	17.8*								
80	70	50	71.7	149.3	16.7*	16.7*	78.6	149.4	15.3*	15.3*				
80	70	60	67.6	145.6	15.6*	15.6*	74.4	145.9	13.7*	13.7*				
80	70	70	63.4	141.0	14.2*	14.2*	70.2	141.5	11.7*	11.7*	76.4	139.0	8.4*	8.4*
80	70	80	59.1	135.5	12.1*	12.1*	65.8	136.2	9.7*	9.7*	71.9	133.6	7.2*	7.2*
80	70	90	54.5	129.0	10.0*	10.0*	61.2	129.8	7.8*	7.8*	67.1	127.0	6.3*	6.3*
80	70	100	49.7	121.2	7.9*	7.9*	56.3	122.1	6.8*	6.8*	61.9	119.1	5.2*	5.2*
80	70	110	44.5	111.9	6.8*	6.8*	51.0	112.9	5.7*	5.7*	56.4	109.4	4.7*	4.7*
80	70	120	38.7	100.6	5.7*	5.7*	45.1	101.6	4.8*	4.8*	50.1	97.4	4.3*	4.3*
80	70	130	32.1	86.5	4.7*	4.7*	38.3	87.4	4.4*	4.4*				
80	70	140	24.0	67.7	4.2*	4.2*								
90	30	25	79.4	124.8	29.9*	29.9*								
90	30	30	77.0	123.7	29.2*	29.2*								
90	30	35	74.5	122.4	28.4*	28.4*	78.1	122.2	26.0*	26.0*				
90	30	40	72.0	120.9	27.7*	27.7*	75.6	120.7	25.4*	25.4*	78.9	119.1	21.8*	21.8*
90	30	50	66.9	117.1	26.3*	26.3*	70.5	117.1	24.0*	24.0*	73.6	115.4	19.6*	19.6*
90	30	60	61.6	112.2	24.8*	24.8*	65.1	112.3	22.6*	22.6*	68.2	110.5	17.8*	17.8*
90	30	70	56.0	106.2	23.3*	23.3*	59.5	106.3	20.6*	20.6*	62.4	104.4	16.4*	16.4*
90	30	80	50.1	98.6	21.7*	21.7*	53.5	98.7	18.2*	18.2*	56.2	96.6	15.3*	15.3*
90	30	90	43.5	89.2	19.0*	19.0*	46.8	89.3	15.9*	15.9*	49.3	86.9	14.4*	14.4*
90	30	100	36.0	77.1	16.0*	16.0*	39.3	77.2	15.4*	15.4*				
90	30	110	26.9	60.7	15.4*	14.4								
90	40	30	78.0	133.7	26.2*	26.2*								
90	40	35	75.7	132.5	25.6*	25.6*								
90	40	40	73.4	131.1	25.0*	25.0*	77.9	130.8	22.8*	22.8*				
90	40	50	68.8	127.6	23.8*	23.8*	73.2	127.4	20.7*	20.7*	77.2	125.3	16.6*	16.6*
90	40	60	64.0	123.1	22.0*	22.0*	68.4	123.1	18.6*	18.6*	72.2	120.9	15.1*	15.1*
90	40	70	59.0	117.6	19.8*	19.8*	63.3	117.6	16.5*	16.5*	67.0	115.3	13.4*	13.4*

LS-238H Tubular Jib Capacities

Capacities shown in thousands of pounds

Boom Length (feet)	Jib Length (feet)	Jib Load Radius (feet)	Jib Angle to Boom											
			0 Degrees				15 Degrees				30 Degrees			
			Boom Angle (deg)	Jib Pt. Height (feet)	ABC+ 20,000# Ctwt.	ABC+0 Ctwt.	Boom Angle (deg)	Jib Pt. Height (feet)	ABC+ 20,000# Ctwt.	ABC+0 Ctwt.	Boom Angle (deg)	Jib Pt. Height (feet)	ABC+ 20,000# Ctwt.	ABC+0 Ctwt.
90	40	80	53.7	110.8	17.4*	17.4*	57.9	111.0	14.8*	14.8*	61.5	108.5	11.9*	11.9*
90	40	90	48.0	102.5	15.4*	15.4*	52.2	102.7	13.0*	13.0*	55.5	100.0	11.2*	11.2*
90	40	100	41.7	92.4	13.5*	13.5*	45.8	92.6	11.6*	11.6*	48.9	89.4	10.4*	10.4*
90	40	110	34.6	79.5	11.7*	11.7*	38.6	79.6	10.8*	10.8*				
90	40	120	25.8	62.2	10.7*	10.7*								
90	50	30	78.9	143.9	23.8*	23.8*								
90	50	35	76.8	142.8	23.2*	23.2*								
90	50	40	74.7	141.4	22.6*	22.6*	79.9	141.2	20.8*	20.8*				
90	50	50	70.4	138.2	21.5*	21.5*	75.5	138.1	18.7*	18.7*				
90	50	60	66.0	134.1	20.1*	20.1*	71.1	134.1	16.3*	16.3*	75.7	131.6	12.0*	12.0*
90	50	70	61.4	129.0	17.6*	17.6*	66.5	129.1	13.8*	13.8*	71.0	126.6	10.8*	10.8*
90	50	80	56.6	122.9	15.0*	15.0*	61.7	123.1	11.8*	11.8*	66.0	120.5	9.5*	9.5*
90	50	90	51.6	115.5	12.3*	12.3*	56.5	115.9	10.5*	10.5*	60.7	113.0	8.4*	8.4*
90	50	100	46.1	106.7	10.9*	10.9*	51.0	107.1	9.1*	9.1*	54.9	103.8	7.8*	7.8*
90	50	110	40.1	95.9	9.4*	9.4*	44.9	96.3	8.1*	8.1*	48.5	92.5	7.1*	7.1*
90	50	120	33.3	82.4	8.2*	8.2*	37.9	82.6	7.4*	7.4*				
90	50	130	24.8	64.2	7.3*	7.3*								
90	60	30	79.6	154.2	21.5*	21.5*								
90	60	35	77.7	153.1	21.0*	21.0*								
90	60	40	75.7	151.9	20.5*	20.5*								
90	60	50	71.7	148.9	19.4*	19.4*	77.6	148.9	17.6*	17.6*				
90	60	60	67.6	145.1	18.4*	18.4*	73.4	145.3	15.1*	15.1*	78.8	142.6	10.3*	10.3*
90	60	70	63.4	140.5	16.3*	16.3*	69.2	140.8	12.6*	12.6*	74.4	138.1	8.5*	8.5*
90	60	80	59.1	135.0	13.7*	13.7*	64.8	135.4	9.9*	9.9*	69.9	132.6	7.6*	7.6*
90	60	90	54.5	128.3	11.0*	11.0*	60.2	128.9	8.4*	8.4*	65.1	125.9	6.7*	6.7*
90	60	100	49.7	120.5	8.7*	8.7*	55.3	121.1	7.4*	7.4*	60.0	117.9	5.8*	5.8*
90	60	110	44.5	111.1	7.6*	7.6*	50.0	111.7	6.3*	6.3*	54.4	108.1	5.5*	5.5*
90	60	120	38.7	99.8	6.5*	6.5*	44.1	100.4	5.7*	5.7*	48.2	96.1	5.1*	5.1*
90	60	130	32.1	85.6	5.7*	5.7*	37.3	86.0	5.2*	5.2*				
90	60	140	24.0	66.8	5.1*	5.1*								
90	70	35	78.4	163.6	18.5*	18.5*								
90	70	40	76.6	162.5	18.0*	18.0*								
90	70	50	72.9	159.8	17.0*	17.0*	79.3	159.8	15.5*	15.5*				
90	70	60	69.1	156.3	16.0*	16.0*	75.5	156.6	14.2*	14.2*				
90	70	70	65.2	152.1	15.0*	15.0*	71.6	152.5	12.3*	12.3*	77.4	149.8	8.8*	8.8*
90	70	80	61.2	147.0	13.1*	13.1*	67.5	147.6	10.4*	10.4*	73.2	144.8	7.5*	7.5*
90	70	90	57.0	141.0	11.2*	11.2*	63.3	141.8	8.5*	8.5*	68.8	138.9	6.6*	6.6*
90	70	100	52.7	134.0	9.1*	9.1*	58.8	134.8	7.3*	7.3*	64.2	131.7	5.7*	5.7*
90	70	110	48.0	125.7	7.5*	7.5*	54.1	126.6	6.3*	6.3*	59.3	123.2	4.9*	4.9*
90	70	120	43.0	115.9	6.5*	6.5*	49.0	116.8	5.3*	5.3*	53.9	112.9	4.5*	4.5*
90	70	130	37.4	104.0	5.4*	5.4*	43.4	104.9	4.7*	4.7*	47.8	100.2	4.1*	4.1*
90	70	140	31.1	89.3	4.7*	4.7*	36.8	90.0	4.3*	4.3*				
90	70	150	23.2	69.8	4.2*	4.2*								
100	30	30	78.0	133.9	29.4*	29.4*								
100	30	35	75.7	132.8	28.8*	28.8*	79.1	132.5	26.3*	26.3*				
100	30	40	73.4	131.4	28.1*	28.1*	76.8	131.2	25.7*	25.7*	79.8	129.5	22.2*	22.2*

Boom Length (feet)	Jib Length (feet)	Jib Load Radius (feet)	Jib Angle to Boom											
			0 Degrees				15 Degrees				30 Degrees			
			Boom Angle (deg)	Jib Pt. Height (feet)	ABC+ 20,000# Cwt.	ABC+0 Cwt.	Boom Angle (deg)	Jib Pt. Height (feet)	ABC+ 20,000# Cwt.	ABC+0 Cwt.	Boom Angle (deg)	Jib Pt. Height (feet)	ABC+ 20,000# Cwt.	ABC+0 Cwt.
100	30	50	68.8	127.9	26.8*	26.8*	72.1	127.8	24.4*	24.4*	75.0	126.1	20.0*	20.0*
100	30	60	64.0	123.5	25.5*	25.5*	67.2	123.5	23.1*	23.1*	70.1	121.7	18.3*	18.3*
100	30	70	59.0	118.0	24.1*	24.1*	62.2	118.1	21.7*	21.7*	64.9	116.2	17.0*	17.0*
100	30	80	53.7	111.3	22.7*	22.3	56.8	111.4	19.6*	19.6*	59.4	109.4	15.8*	15.8*
100	30	90	48.0	103.2	20.3	18.9	51.1	103.3	17.3*	17.3*	53.5	101.0	14.9*	14.9*
100	30	100	41.7	93.1	17.5	16.3	44.8	93.2	15.7*	15.7*	46.9	90.5	14.1*	14.1*
100	30	110	34.6	80.3	15.2	14.1	37.5	80.3	15.3*	14.3				
100	30	120	25.8	63.1	13.3	12.4								
100	40	30	78.9	144.0	26.4*	26.4*								
100	40	35	76.8	142.8	25.9*	25.9*								
100	40	40	74.7	141.5	25.3*	25.3*	78.8	141.2	23.2*	23.2*				
100	40	50	70.4	138.3	24.2*	24.2*	74.5	138.1	21.3*	21.3*	78.2	135.9	16.9*	16.9*
100	40	60	66.0	134.2	22.8*	22.8*	70.0	134.1	19.3*	19.3*	73.7	131.8	15.4*	15.4*
100	40	70	61.4	129.1	20.8*	20.8*	65.4	129.1	17.3*	17.3*	68.9	126.8	14.0*	14.0*
100	40	80	56.6	123.0	18.7*	18.7*	60.6	123.1	15.6*	15.6*	64.0	120.7	12.5*	12.5*
100	40	90	51.6	115.7	16.5*	16.5*	55.5	115.8	14.0*	14.0*	58.7	113.2	11.5*	11.5*
100	40	100	46.1	106.8	14.8*	14.8*	50.0	107.0	12.3*	12.3*	53.0	104.1	10.9*	10.9*
100	40	110	40.1	96.1	13.0*	13.0*	43.9	96.2	11.4*	11.4*				
100	40	120	33.3	82.6	11.5*	11.5*	36.9	82.6	10.6*	10.6*				
100	40	130	24.8	64.5	10.6*	10.6*								
100	50	30	79.6	154.1	24.0*	24.0*								
100	50	35	77.7	153.1	23.4*	23.4*								
100	50	40	75.7	151.8	22.9*	22.9*								
100	50	50	71.7	148.8	21.9*	21.9*	76.6	148.6	19.3*	19.3*				
100	50	60	67.6	145.0	20.8*	20.8*	72.5	144.9	17.1*	17.1*	76.8	142.3	12.3*	12.3*
100	50	70	63.4	140.3	18.7*	18.7*	68.2	140.4	14.7*	14.7*	72.4	137.8	11.2*	11.2*
100	50	80	59.1	134.7	16.3*	16.3*	63.8	134.9	12.3*	12.3*	67.9	132.2	10.0*	10.0*
100	50	90	54.5	128.1	13.8*	13.8*	59.2	128.4	11.2*	11.2*	63.1	125.5	8.8*	8.8*
100	50	100	49.7	120.2	11.8*	11.8*	54.3	120.5	9.9*	9.9*	58.0	117.4	8.1*	8.1*
100	50	110	44.5	110.8	10.5*	10.5*	49.0	111.2	8.6*	8.6*	52.5	107.6	7.5*	7.5*
100	50	120	38.7	99.4	9.0*	9.0*	43.1	99.7	7.9*	7.9*				
100	50	130	32.1	85.3	8.0*	8.0*	36.4	85.4	7.2*	7.2*				
100	50	140	24.0	66.4	7.2*	7.2*								
100	60	35	78.4	163.4	21.2*	21.2*								
100	60	40	76.6	162.2	20.7*	20.7*								
100	60	50	72.9	159.4	19.8*	19.8*	78.4	159.3	18.0*	18.0*				
100	60	60	69.1	155.9	18.7*	18.7*	74.5	155.9	15.8*	15.8*	79.6	153.2	10.8*	10.8*
100	60	70	65.2	151.6	17.4*	17.4*	70.6	151.8	13.4*	13.4*	75.5	149.0	8.8*	8.8*
100	60	80	61.2	146.5	15.0*	15.0*	66.6	146.8	11.0*	11.0*	71.3	143.9	7.9*	7.9*
100	60	90	57.0	140.5	12.5*	12.5*	62.4	140.9	8.8*	8.8*	67.0	137.9	7.0*	7.0*
100	60	100	52.7	133.4	9.9*	9.9*	57.9	133.9	7.9*	7.9*	62.4	130.6	6.1*	6.1*
100	60	110	48.0	125.0	8.3*	8.3*	53.2	125.6	7.0*	7.0*	57.5	122.0	5.7*	5.7*
100	60	120	43.0	115.1	7.3*	7.3*	48.1	115.7	5.9*	5.9*	52.1	111.7	5.3*	5.3*
100	60	130	37.4	103.2	6.2*	6.2*	42.4	103.7	5.6*	5.6*				
100	60	140	31.1	88.4	5.6*	5.6*	35.9	88.7	5.1*	5.1*				
100	60	150	23.2	68.8	5.1*	5.1*								

LS-238H Tubular Jib Capacities

Capacities shown in thousands of pounds

Boom Length (feet)	Jib Length (feet)	Jib Load Radius (feet)	Jib Angle to Boom													
			0 Degrees				15 Degrees				30 Degrees					
			Boom Angle (deg)	Jib Pt. Height (feet)	ABC+ 20,000# Cwt.	ABC+0 Cwt.	Boom Angle (deg)	Jib Pt. Height (feet)	ABC+ 20,000# Cwt.	ABC+0 Cwt.	Boom Angle (deg)	Jib Pt. Height (feet)	ABC+ 20,000# Cwt.	ABC+0 Cwt.		
100	70	35	79.1	173.8	18.7*	18.7*										
100	70	40	77.4	172.8	18.2*	18.2*										
100	70	50	73.9	170.2	17.3*	17.3*	80.0	170.2	15.7*	15.7*						
100	70	60	70.4	167.0	16.4*	16.4*	76.4	167.1	14.6*	14.6*						
100	70	70	66.8	163.0	15.4*	15.4*	72.7	163.3	12.9*	12.9*	78.2	160.5	9.2*	9.2*		
100	70	80	63.0	158.4	14.0*	14.0*	69.0	158.8	11.1*	11.1*	74.3	155.9	7.7*	7.7*		
100	70	90	59.2	152.8	12.2*	12.2*	65.1	153.4	9.3*	9.3*	70.3	150.4	6.9*	6.9*		
100	70	100	55.2	146.4	10.3*	10.3*	61.0	147.1	7.7*	7.7*	66.1	143.9	6.1*	6.1*		
100	70	110	51.0	138.9	8.3*	8.3*	56.8	139.7	6.9*	6.9*	61.7	136.2	5.2*	5.2*		
100	70	120	46.5	130.1	7.2*	7.2*	52.2	130.9	6.0*	6.0*	56.9	127.1	4.7*	4.7*		
100	70	130	41.6	119.7	6.3*	6.3*	47.3	120.6	5.0*	5.0*	51.7	116.3	4.4*	4.4*		
100	70	140	36.3	107.4	5.2*	5.2*	41.8	108.1	4.6*	4.6*	45.8	102.9	4.0*	4.0*		
100	70	150	30.1	92.1	4.6*	4.6*	35.5	92.6	4.2*	4.2*						
100	70	160	22.5	71.8	4.1*	4.1*										
110	30	30	78.9	144.2	29.7*	29.7*										
110	30	35	76.8	143.1	29.1*	29.1*	79.9	142.8	26.5*	26.5*						
110	30	40	74.7	141.8	28.5*	28.5*	77.8	141.6	25.9*	25.9*						
110	30	50	70.4	138.6	27.3*	27.3*	73.4	138.5	24.8*	24.8*	76.2	136.7	20.4*	20.4*		
110	30	60	66.0	134.6	26.0*	26.0*	69.0	134.5	23.6*	23.6*	71.6	132.7	18.8*	18.8*		
110	30	70	61.4	129.6	24.8*	24.8*	64.4	129.6	22.4*	22.4*	66.9	127.7	17.4*	17.4*		
110	30	80	56.6	123.5	23.4	22.1	59.6	123.6	20.7*	20.7*	62.0	121.6	16.3*	16.3*		
110	30	90	51.6	116.3	20.0	18.7	54.5	116.4	18.6*	18.6*	56.8	114.2	15.3*	15.3*		
110	30	100	46.1	107.5	17.2	16.0	49.0	107.6	16.4*	16.3	51.1	105.2	14.6*	14.6*		
110	30	110	40.1	96.8	15.0	13.9	42.9	96.8	15.2	14.1						
110	30	120	33.3	83.3	13.1	12.1	36.0	83.3	13.3	12.3						
110	30	130	24.8	65.3	11.5	10.6										
110	40	30	79.6	154.2	26.6*	26.6*										
110	40	35	77.7	153.1	26.1*	26.1*										
110	40	40	75.7	151.9	25.6*	25.6*	79.6	151.5	23.4*	23.4*						
110	40	50	71.7	148.9	24.5*	24.5*	75.6	148.6	21.8*	21.8*	79.1	146.3	17.1*	17.1*		
110	40	60	67.6	145.1	23.5*	23.5*	71.5	144.9	20.0*	20.0*	74.9	142.6	15.7*	15.7*		
110	40	70	63.4	140.4	21.7*	21.7*	67.2	140.4	18.1*	18.1*	70.5	138.0	14.5*	14.5*		
110	40	80	59.1	134.9	19.8*	19.8*	62.8	134.9	16.3*	16.3*	66.0	132.4	13.1*	13.1*		
110	40	90	54.5	128.3	17.8*	17.8*	58.2	128.3	14.9*	14.9*	61.3	125.7	11.8*	11.8*		
110	40	100	49.7	120.4	16.0*	16.0*	53.3	120.5	13.3*	13.3*	56.2	117.7	11.3*	11.3*		
110	40	110	44.5	111.0	14.3*	14.1	48.1	111.1	11.9*	11.9*	50.7	108.0	10.6*	10.6*		
110	40	120	38.7	99.6	12.5*	12.3	42.2	99.7	11.2*	11.2*						
110	40	130	32.1	85.5	11.4*	10.8	35.5	85.4	10.4*	10.4*						
110	40	140	24.0	66.6	10.4	9.6										
110	50	35	78.4	163.3	23.7*	23.7*										
110	50	40	76.6	162.1	23.2*	23.2*										
110	50	50	72.9	159.3	22.2*	22.2*	77.4	159.0	19.8*	19.8*						
110	50	60	69.1	155.8	21.2*	21.2*	73.6	155.6	17.7*	17.7*	77.7	153.0	12.6*	12.6*		
110	50	70	65.2	151.5	19.7*	19.7*	69.7	151.4	15.6*	15.6*	73.7	148.7	11.5*	11.5*		
110	50	80	61.2	146.3	17.5*	17.5*	65.7	146.4	13.3*	13.3*	69.5	143.6	10.4*	10.4*		
110	50	90	57.0	140.2	15.2*	15.2*	61.4	140.4	11.7*	11.7*	65.2	137.5	9.3*	9.3*		
110	50	100	52.7	133.1	12.8*	12.8*	57.0	133.3	10.6*	10.6*	60.6	130.3	8.4*	8.4*		

Boom Length (feet)	Jib Length (feet)	Jib Load Radius (feet)	Jib Angle to Boom											
			0 Degrees				15 Degrees				30 Degrees			
			Boom Angle (deg)	Jib Pt. Height (feet)	ABC+ 20,000# Ctwt.	ABC+0 Ctwt.	Boom Angle (deg)	Jib Pt. Height (feet)	ABC+ 20,000# Ctwt.	ABC+0 Ctwt.	Boom Angle (deg)	Jib Pt. Height (feet)	ABC+ 20,000# Ctwt.	ABC+0 Ctwt.
110	50	110	48.0	124.7	11.4*	11.4*	52.3	125.0	9.4*	9.4*	55.7	121.6	7.9*	7.9*
110	50	120	43.0	114.8	10.1*	10.1*	47.2	115.1	8.4*	8.4*	50.4	111.3	7.3*	7.3*
110	50	130	37.4	102.9	8.7*	8.7*	41.6	103.1	7.8*	7.8*				
110	50	140	31.1	88.1	7.9*	7.9*	35.0	88.1	7.1*	7.1*				
110	50	150	23.2	68.5	7.1*	7.1*								
110	60	35	79.1	173.6	21.4*	21.4*								
110	60	40	77.4	172.5	21.0*	21.0*								
110	60	50	73.9	169.9	20.0*	20.0*	79.1	169.7	18.2*	18.2*				
110	60	60	70.4	166.6	19.1*	19.1*	75.5	166.5	16.4*	16.4*				
110	60	70	66.8	162.6	18.1*	18.1*	71.9	162.7	14.2*	14.2*	76.5	159.8	8.9*	8.9*
110	60	80	63.0	157.9	16.1*	16.1*	68.1	158.1	11.9*	11.9*	72.6	155.1	8.2*	8.2*
110	60	90	59.2	152.3	13.8*	13.8*	64.2	152.6	9.6*	9.6*	68.6	149.5	7.4*	7.4*
110	60	100	55.2	145.8	11.4*	11.4*	60.2	146.2	8.3*	8.3*	64.4	142.9	6.5*	6.5*
110	60	110	51.0	138.2	8.9*	8.9*	55.9	138.7	7.5*	7.5*	60.0	135.2	5.8*	5.8*
110	60	120	46.5	129.3	8.0*	8.0*	51.3	129.9	6.6*	6.6*	55.2	126.0	5.5*	5.5*
110	60	130	41.6	118.9	7.1*	7.1*	46.4	119.4	5.8*	5.8*	50.0	115.1	5.2*	5.2*
110	60	140	36.3	106.5	6.0*	6.0*	40.9	106.9	5.5*	5.5*				
110	60	150	30.1	91.2	5.5*	5.5*	34.6	91.3	5.0*	5.0*				
110	60	160	22.5	70.9	5.0*	5.0*								
110	70	35	79.7	184.0	18.9*	18.9*								
110	70	40	78.1	183.0	18.4*	18.4*								
110	70	50	74.8	180.6	17.5*	17.5*								
110	70	60	71.5	177.6	16.7*	16.7*	77.2	177.6	15.0*	15.0*				
110	70	70	68.1	173.9	15.8*	15.8*	73.8	174.1	13.4*	13.4*	79.0	171.1	9.5*	9.5*
110	70	80	64.7	169.5	14.7*	14.7*	70.3	169.8	11.7*	11.7*	75.3	166.8	7.9*	7.9*
110	70	90	61.1	164.4	13.1*	13.1*	66.6	164.8	10.0*	10.0*	71.6	161.7	7.2*	7.2*
110	70	100	57.4	158.4	11.3*	11.3*	62.9	159.0	8.3*	8.3*	67.7	155.7	6.4*	6.4*
110	70	110	53.5	151.5	9.5*	9.5*	59.0	152.2	7.3*	7.3*	63.7	148.8	5.6*	5.6*
110	70	120	49.4	143.5	7.8*	7.8*	54.9	144.3	6.5*	6.5*	59.4	140.6	4.9*	4.9*
110	70	130	45.1	134.3	6.9*	6.9*	50.5	135.1	5.6*	5.6*	54.8	130.9	4.6*	4.6*
110	70	140	40.4	123.5	6.0*	6.0*	45.7	124.3	4.9*	4.9*	49.7	119.5	4.2*	4.2*
110	70	150	35.2	110.6	5.0*	5.0*	40.4	111.2	4.5*	4.5*				
110	70	160	29.3	94.7	4.6*	4.6*	34.2	95.1	4.1*	4.1*				
110	70	170	21.9	73.8	4.1*	4.1*								
120	30	30	79.6	154.3	29.9*	29.9*								
120	30	35	77.7	153.3	29.4*	29.4*								
120	30	40	75.7	152.1	28.8*	28.8*	78.6	151.9	26.2*	26.2*				
120	30	50	71.7	149.2	27.6*	27.6*	74.6	149.0	25.1*	25.1*	77.2	147.2	20.8*	20.8*
120	30	60	67.6	145.4	26.5*	26.5*	70.5	145.3	24.0*	24.0*	73.0	143.5	19.2*	19.2*
120	30	70	63.4	140.9	25.3*	25.3*	66.3	140.8	22.9*	22.9*	68.7	138.9	17.8*	17.8*
120	30	80	59.1	135.4	23.2	21.8	61.9	135.4	21.6*	21.6*	64.2	133.4	16.7*	16.7*
120	30	90	54.5	128.8	19.8	18.4	57.3	128.9	19.7*	18.8	59.5	126.7	15.8*	15.8*
120	30	100	49.7	121.0	17.0	15.8	52.4	121.1	17.3	16.1	54.5	118.8	15.0*	15.0*
120	30	110	44.5	111.7	14.7	13.6	47.1	111.7	15.0	13.9	49.0	109.1	14.3*	14.1
120	30	120	38.7	100.4	12.9	11.9	41.3	100.4	13.1	12.1				
120	30	130	32.1	86.3	11.3	10.4	34.6	86.1	11.5	10.6				
120	30	140	24.0	67.5	10.0	9.1								

LS-238H Tubular Jib Capacities

Capacities shown in thousands of pounds

Boom Length (feet)	Jib Length (feet)	Jib Load Radius (feet)	Jib Angle to Boom													
			0 Degrees				15 Degrees				30 Degrees					
			Boom Angle (deg)	Jib Pt. Height (feet)	ABC+ 20,000# Ctw.†	ABC+0 Ctw.†	Boom Angle (deg)	Jib Pt. Height (feet)	ABC+ 20,000# Ctw.†	ABC+0 Ctw.†	Boom Angle (deg)	Jib Pt. Height (feet)	ABC+ 20,000# Ctw.†	ABC+0 Ctw.†		
120	40	35	78.4	163.3	26.3*	26.3*										
120	40	40	76.6	162.2	25.8*	25.8*										
120	40	50	72.9	159.4	24.9*	24.9*	76.5	159.1	22.2*	22.2*	79.8	156.7	17.3*	17.3*		
120	40	60	69.1	155.9	23.8*	23.8*	72.7	155.7	20.5*	20.5*	75.9	153.3	16.0*	16.0*		
120	40	70	65.2	151.6	22.5*	22.5*	68.8	151.5	18.8*	18.8*	71.9	149.1	14.9*	14.9*		
120	40	80	61.2	146.4	20.7*	20.7*	64.7	146.4	17.0*	17.0*	67.8	143.9	13.7*	13.7*		
120	40	90	57.0	140.4	18.9*	18.6	60.5	140.4	15.6*	15.6*	63.4	137.8	12.3*	12.3*		
120	40	100	52.7	133.3	17.0*	15.9	56.1	133.4	14.2*	14.2*	58.9	130.6	11.6*	11.6*		
120	40	110	48.0	124.9	14.9	13.8	51.4	125.0	12.7*	12.7*	54.0	122.0	11.0*	11.0*		
120	40	120	43.0	115.0	13.0	12.0	46.3	115.1	11.7*	11.7*	48.7	111.7	10.4*	10.4*		
120	40	130	37.4	103.1	11.5	10.6	40.7	103.1	11.0*	10.8						
120	40	140	31.1	88.3	10.2	9.3	34.2	88.1	10.3*	9.5						
120	40	150	23.2	68.7	9.0	8.2										
120	50	35	79.1	173.5	23.8*	23.8*										
120	50	40	77.4	172.4	23.4*	23.4*										
120	50	50	73.9	169.8	22.4*	22.4*	78.2	169.4	20.2*	20.2*						
120	50	60	70.4	166.5	21.5*	21.5*	74.6	166.2	18.3*	18.3*	78.5	163.5	13.1*	13.1*		
120	50	70	66.8	162.5	20.5*	20.5*	71.0	162.3	16.3*	16.3*	74.8	159.6	11.7*	11.7*		
120	50	80	63.0	157.7	18.5*	18.5*	67.2	157.7	14.2*	14.2*	70.9	154.8	10.8*	10.8*		
120	50	90	59.2	152.1	16.4*	16.4*	63.4	152.2	12.2*	12.2*	66.9	149.2	9.8*	9.8*		
120	50	100	55.2	145.5	14.2*	14.2*	59.3	145.7	11.2*	11.2*	62.7	142.6	8.7*	8.7*		
120	50	110	51.0	137.9	12.1*	12.1*	55.0	138.2	10.1*	10.1*	58.3	134.9	8.1*	8.1*		
120	50	120	46.5	129.1	11.0*	11.0*	50.5	129.3	9.0*	9.0*	53.6	125.7	7.6*	7.6*		
120	50	130	41.6	118.6	9.8*	9.8*	45.6	118.9	8.2*	8.2*	48.4	114.8	7.1*	7.1*		
120	50	140	36.3	106.2	8.5*	8.5*	40.1	106.3	7.6*	7.6*						
120	50	150	30.1	90.8	7.8*	7.8*										
120	50	160	22.5	70.5	7.0*	7.0*										
120	60	35	79.7	183.8	21.6*	21.6*										
120	60	40	78.1	182.8	21.1*	21.1*										
120	60	50	74.8	180.3	20.3*	20.3*	79.7	180.0	18.4*	18.4*						
120	60	60	71.5	177.2	19.4*	19.4*	76.4	177.0	16.9*	16.9*						
120	60	70	68.1	173.5	18.5*	18.5*	72.9	173.4	14.8*	14.8*	77.3	170.5	9.4*	9.4*		
120	60	80	64.7	169.0	17.1*	17.1*	69.4	169.1	12.7*	12.7*	73.7	166.1	8.4*	8.4*		
120	60	90	61.1	163.8	14.9*	14.9*	65.8	164.1	10.5*	10.5*	70.0	160.9	7.6*	7.6*		
120	60	100	57.4	157.8	12.7*	12.7*	62.1	158.1	8.7*	8.7*	66.1	154.9	6.9*	6.9*		
120	60	110	53.5	150.9	10.4*	10.4*	58.2	151.3	8.0*	8.0*	62.1	147.8	6.1*	6.1*		
120	60	120	49.4	142.8	8.6*	8.6*	54.0	143.3	7.1*	7.1*	57.8	139.6	5.7*	5.7*		
120	60	130	45.1	133.5	7.7*	7.7*	49.7	134.0	6.2*	6.2*	53.2	129.9	5.4*	5.4*		
120	60	140	40.4	122.7	6.8*	6.8*	44.9	123.1	5.7*	5.7*	48.2	118.4	5.1*	5.1*		
120	60	150	35.2	109.7	5.9*	5.9*	39.6	110.0	5.4*	5.4*						
120	60	160	29.3	93.8	5.5*	5.5*	33.4	93.8	5.0*	5.0*						
120	60	170	21.9	72.8	5.0*	5.0*										
120	70	40	78.8	193.2	18.6*	18.6*										
120	70	50	75.7	190.9	17.8*	17.8*										
120	70	60	72.5	188.1	16.9*	16.9*	77.9	188.0	15.1*	15.1*						
120	70	70	69.3	184.6	16.1*	16.1*	74.7	184.7	13.8*	13.8*	79.6	181.6	9.6*	9.6*		
120	70	80	66.1	180.5	15.2*	15.2*	71.4	180.8	12.3*	12.3*	76.2	177.6	8.3*	8.3*		

Boom Length (feet)	Jib Length (feet)	Jib Load Radius (feet)	Jib Angle to Boom											
			0 Degrees				15 Degrees				30 Degrees			
			Boom Angle (deg)	Jib Pt. Height (feet)	ABC+ 20,000# Cwt.	ABC+0 Cwt.	Boom Angle (deg)	Jib Pt. Height (feet)	ABC+ 20,000# Cwt.	ABC+0 Cwt.	Boom Angle (deg)	Jib Pt. Height (feet)	ABC+ 20,000# Cwt.	ABC+0 Cwt.
120	70	90	62.7	175.7	13.8*	13.8*	68.0	176.1	10.7*	10.7*	72.7	172.9	7.4*	7.4*
120	70	100	59.3	170.2	12.2*	12.2*	64.5	170.7	9.1*	9.1*	69.1	167.3	6.7*	6.7*
120	70	110	55.7	163.8	10.6*	10.6*	60.9	164.4	7.7*	7.7*	65.4	160.9	5.9*	5.9*
120	70	120	52.0	156.5	8.8*	8.8*	57.1	157.1	6.9*	6.9*	61.5	153.4	5.1*	5.1*
120	70	130	48.0	148.1	7.5*	7.5*	53.1	148.8	6.1*	6.1*	57.3	144.8	4.7*	4.7*
120	70	140	43.8	138.4	6.7*	6.7*	48.9	139.1	5.3*	5.3*	52.8	134.6	4.4*	4.4*
120	70	150	39.3	127.1	5.8*	5.8*	44.2	127.8	4.8*	4.8*	47.9	122.6	4.1*	4.1*
120	70	160	34.3	113.7	4.9*	4.9*	39.1	114.2	4.4*	4.4*				
120	70	170	28.5	97.3	4.5*	4.5*	33.1	97.5	4.0*	4.0*				
120	70	180	21.3	75.7	4.0*	4.0*								
130	30	35	78.4	163.5	29.6*	29.6*								
130	30	40	76.6	162.4	29.1*	29.1*	79.3	162.1	26.4*	26.4*				
130	30	50	72.9	159.7	28.0*	28.0*	75.6	159.5	25.4*	25.4*	78.0	157.6	21.1*	21.1*
130	30	60	69.1	156.2	26.9*	26.9*	71.8	156.1	24.3*	24.3*	74.1	154.2	19.5*	19.5*
130	30	70	65.2	152.0	25.8*	25.8*	67.9	151.9	23.3*	23.3*	70.2	150.0	18.2*	18.2*
130	30	80	61.2	146.9	22.9	21.6	63.8	146.9	22.2*	22.0	66.0	144.9	17.1*	17.1*
130	30	90	57.0	140.9	19.5	18.2	59.6	140.9	19.9	18.6	61.7	138.9	16.2*	16.2*
130	30	100	52.7	133.8	16.7	15.5	55.2	133.9	17.1	15.9	57.2	131.7	15.4*	15.4*
130	30	110	48.0	125.5	14.5	13.4	50.5	125.6	14.7	13.7	52.4	123.2	14.7*	13.9
130	30	120	43.0	115.7	12.6	11.6	45.5	115.7	12.8	11.9	47.2	113.0	13.0	12.0
130	30	130	37.4	103.8	11.0	10.1	39.8	103.8	11.2	10.3				
130	30	140	31.1	89.1	9.7	8.9	33.4	88.9	9.9	9.0				
130	30	150	23.2	69.6	8.6	7.8								
130	40	35	79.1	173.6	26.5*	26.5*								
130	40	40	77.4	172.5	26.1*	26.1*								
130	40	50	73.9	169.9	25.1*	25.1*	77.3	169.5	22.6*	22.6*				
130	40	60	70.4	166.6	24.2*	24.2*	73.8	166.3	21.0*	21.0*	76.8	163.9	16.2*	16.2*
130	40	70	66.8	162.6	23.2*	23.2*	70.1	162.4	19.4*	19.4*	73.1	159.9	15.1*	15.1*
130	40	80	63.0	157.8	21.6*	21.6*	66.4	157.7	17.7*	17.7*	69.2	155.2	14.1*	14.1*
130	40	90	59.2	152.2	19.7	18.3	62.5	152.2	16.2*	16.2*	65.3	149.6	12.9*	12.9*
130	40	100	55.2	145.7	16.9	15.7	58.5	145.7	14.9*	14.9*	61.1	143.0	11.8*	11.8*
130	40	110	51.0	138.1	14.6	13.5	54.2	138.2	13.6*	13.6*	56.7	135.2	11.3*	11.3*
130	40	120	46.5	129.2	12.8	11.8	49.7	129.3	12.2*	12.1	52.0	126.1	10.8*	10.8*
130	40	130	41.6	118.8	11.2	10.3	44.8	118.9	11.5*	10.6				
130	40	140	36.3	106.4	9.9	9.1	39.3	106.4	10.1	9.3				
130	40	150	30.1	91.0	8.7	8.0								
130	40	160	22.5	70.7	7.8	7.0								
130	50	35	79.7	183.7	24.0*	24.0*								
130	50	40	78.1	182.7	23.6*	23.6*								
130	50	50	74.8	180.2	22.7*	22.7*	78.9	179.8	20.6*	20.6*				
130	50	60	71.5	177.1	21.8*	21.8*	75.5	176.8	18.7*	18.7*	79.2	174.0	13.5*	13.5*
130	50	70	68.1	173.3	20.9*	20.9*	72.1	173.1	16.9*	16.9*	75.7	170.3	12.0*	12.0*
130	50	80	64.7	168.9	19.4*	19.4*	68.6	168.8	15.0*	15.0*	72.1	165.9	11.1*	11.1*
130	50	90	61.1	163.6	17.4*	17.4*	65.0	163.7	13.0*	13.0*	68.4	160.7	10.1*	10.1*
130	50	100	57.4	157.6	15.4*	15.4*	61.3	157.7	11.7*	11.7*	64.5	154.6	9.2*	9.2*
130	50	110	53.5	150.6	13.3*	13.3*	57.4	150.8	10.7*	10.7*	60.5	147.5	8.4*	8.4*
130	50	120	49.4	142.6	11.7*	11.7*	53.3	142.8	9.7*	9.7*	56.3	139.3	7.9*	7.9*

LS-238H Tubular Jib Capacities

Capacities shown in thousands of pounds

Boom Length (feet)	Jib Length (feet)	Jib Load Radius (feet)	Jib Angle to Boom											
			0 Degrees				15 Degrees				30 Degrees			
			Boom Angle (deg)	Jib Pt. Height (feet)	ABC+ 20,000# Cwt.	ABC+0 Cwt.	Boom Angle (deg)	Jib Pt. Height (feet)	ABC+ 20,000# Cwt.	ABC+0 Cwt.	Boom Angle (deg)	Jib Pt. Height (feet)	ABC+ 20,000# Cwt.	ABC+0 Cwt.
130	50	130	45.1	133.3	10.7*	10.4	48.9	133.5	8.6*	8.6*	51.7	129.6	7.4*	7.4*
130	50	140	40.4	122.4	9.5*	9.2	44.1	122.5	8.0*	8.0*				
130	50	150	35.2	109.4	8.4*	8.1	38.8	109.5	7.5*	7.5*				
130	50	160	29.3	93.4	7.7*	7.2								
130	50	170	21.9	72.4	7.0*	6.3								
130	60	40	78.8	193.0	21.3*	21.3*								
130	60	50	75.7	190.7	20.5*	20.5*								
130	60	60	72.5	187.7	19.7*	19.7*	77.1	187.5	17.3*	17.3*				
130	60	70	69.3	184.2	18.8*	18.8*	73.9	184.1	15.4*	15.4*	78.0	181.0	9.9*	9.9*
130	60	80	66.1	180.1	17.4*	17.4*	70.6	180.1	13.4*	13.4*	74.7	177.0	8.6*	8.6*
130	60	90	62.7	175.2	15.9*	15.9*	67.2	175.3	11.4*	11.4*	71.2	172.2	7.9*	7.9*
130	60	100	59.3	169.6	13.8*	13.8*	63.8	169.8	9.3*	9.3*	67.6	166.5	7.2*	7.2*
130	60	110	55.7	163.2	11.7*	11.7*	60.1	163.5	8.3*	8.3*	63.9	160.0	6.4*	6.4*
130	60	120	52.0	155.8	9.5*	9.5*	56.4	156.2	7.6*	7.6*	60.0	152.5	5.8*	5.8*
130	60	130	48.0	147.4	8.3*	8.3*	52.4	147.8	6.8*	6.8*	55.8	143.8	5.6*	5.6*
130	60	140	43.8	137.6	7.5*	7.5*	48.1	138.0	5.9*	5.9*	51.4	133.7	5.3*	5.3*
130	60	150	39.3	126.3	6.6*	6.6*	43.5	126.6	5.6*	5.6*				
130	60	160	34.3	112.8	5.8*	5.8*	38.3	113.1	5.3*	5.3*				
130	60	170	28.5	96.4	5.4*	5.4*								
130	60	180	21.3	74.7	5.0*	5.0*								
130	70	40	79.3	203.4	18.7*	18.7*								
130	70	50	76.4	201.2	18.0*	18.0*								
130	70	60	73.4	198.5	17.2*	17.2*	78.5	198.4	15.3*	15.3*				
130	70	70	70.4	195.3	16.4*	16.4*	75.5	195.3	14.2*	14.2*				
130	70	80	67.3	191.4	15.5*	15.5*	72.4	191.6	12.7*	12.7*	77.0	188.3	8.7*	8.7*
130	70	90	64.2	186.9	14.1*	14.1*	69.2	187.2	11.3*	11.3*	73.7	183.9	7.6*	7.6*
130	70	100	61.0	181.7	12.9*	12.9*	66.0	182.1	9.7*	9.7*	70.4	178.7	6.9*	6.9*
130	70	110	57.6	175.7	11.5*	11.5*	62.6	176.3	8.2*	8.2*	66.9	172.7	6.2*	6.2*
130	70	120	54.2	169.0	9.8*	9.8*	59.1	169.6	7.3*	7.3*	63.3	165.8	5.5*	5.5*
130	70	130	50.6	161.3	8.2*	8.2*	55.4	161.9	6.6*	6.6*	59.4	157.9	4.9*	4.9*
130	70	140	46.7	152.4	7.3*	7.3*	51.6	153.1	5.8*	5.8*	55.4	148.8	4.6*	4.6*
130	70	150	42.7	142.3	6.5*	6.5*	47.4	143.0	5.0*	5.0*	51.1	138.2	4.3*	4.3*
130	70	160	38.3	130.6	5.6*	5.6*	42.9	131.2	4.7*	4.7*	46.3	125.7	4.0*	4.0*
130	70	170	33.4	116.7	4.8*	4.8*	37.9	117.2	4.3*	4.3*				
130	70	180	27.7	99.8	4.5*	4.5*								
130	70	190	20.7	77.5	4.0*	4.0*								
140	30	35	79.1	173.7	29.8*	29.8*								
140	30	40	77.4	172.7	29.3*	29.3*	80.0	172.4	26.6*	26.6*				
140	30	50	73.9	170.1	28.3*	28.3*	76.5	169.9	25.6*	25.6*	78.8	168.0	21.4*	21.4*
140	30	60	70.4	166.9	27.3*	27.3*	72.9	166.7	24.6*	24.6*	75.1	164.8	19.9*	19.9*
140	30	70	66.8	162.9	26.2*	25.6	69.3	162.8	23.7*	23.7*	71.4	160.9	18.6*	18.6*
140	30	80	63.0	158.2	22.7	21.3	65.5	158.2	22.7*	21.8	67.6	156.2	17.5*	17.5*
140	30	90	59.2	152.7	19.2	17.9	61.7	152.7	19.7	18.4	63.7	150.6	16.5*	16.5*
140	30	100	55.2	146.2	16.4	15.3	57.6	146.2	16.8	15.6	59.5	144.1	15.7*	15.7*
140	30	110	51.0	138.7	14.2	13.1	53.4	138.7	14.5	13.4	55.2	136.4	14.8	13.7
140	30	120	46.5	129.9	12.3	11.4	48.8	129.9	12.6	11.6	50.5	127.4	12.8	11.8
140	30	130	41.6	119.5	10.8	9.9	43.9	119.5	11.0	10.1				

Boom Length (feet)	Jib Length (feet)	Jib Load Radius (feet)	Jib Angle to Boom											
			0 Degrees				15 Degrees				30 Degrees			
			Boom Angle (deg)	Jib Pt. Height (feet)	ABC+ 20,000# Ctwt.	ABC+0 Ctwt.	Boom Angle (deg)	Jib Pt. Height (feet)	ABC+ 20,000# Ctwt.	ABC+0 Ctwt.	Boom Angle (deg)	Jib Pt. Height (feet)	ABC+ 20,000# Ctwt.	ABC+0 Ctwt.
140	30	140	36.3	107.1	9.5	8.6	38.5	107.1	9.6	8.8				
140	30	150	30.1	91.8	8.3	7.5								
140	30	160	22.5	71.6	7.3	6.6								
140	40	35	79.7	183.7	26.7*	26.7*								
140	40	40	78.1	182.7	26.2*	26.2*								
140	40	50	74.8	180.3	25.4*	25.4*	78.1	179.9	22.9*	22.9*				
140	40	60	71.5	177.2	24.5*	24.5*	74.7	176.8	21.4*	21.4*	77.6	174.4	16.5*	16.5*
140	40	70	68.1	173.4	23.6*	23.6*	71.3	173.2	19.9*	19.9*	74.1	170.7	15.4*	15.4*
140	40	80	64.7	169.0	22.3*	21.5	67.8	168.8	18.4*	18.4*	70.5	166.3	14.5*	14.5*
140	40	90	61.1	163.8	19.4	18.1	64.2	163.7	16.8*	16.8*	66.8	161.1	13.4*	13.4*
140	40	100	57.4	157.7	16.6	15.4	60.5	157.7	15.6*	15.6*	63.0	155.0	12.2*	12.2*
140	40	110	53.5	150.8	14.4	13.3	56.6	150.8	14.3*	13.7	59.0	148.0	11.6*	11.6*
140	40	120	49.4	142.7	12.5	11.5	52.5	142.8	12.9	11.9	54.8	139.7	11.1*	11.1*
140	40	130	45.1	133.4	10.9	10.0	48.1	133.5	11.3	10.3	50.3	130.1	10.6*	10.6*
140	40	140	40.4	122.6	9.6	8.8	43.3	122.6	9.9	9.0				
140	40	150	35.2	109.6	8.5	7.7	38.1	109.5	8.7	7.9				
140	40	160	29.3	93.7	7.5	6.8								
140	50	40	78.8	192.9	23.7*	23.7*								
140	50	50	75.7	190.5	22.9*	22.9*	79.5	190.1	20.7*	20.7*				
140	50	60	72.5	187.6	22.1*	22.1*	76.3	187.3	19.2*	19.2*	79.8	184.4	13.8*	13.8*
140	50	70	69.3	184.1	21.2*	21.2*	73.1	183.8	17.4*	17.4*	76.5	181.0	12.2*	12.2*
140	50	80	66.1	179.9	20.0*	20.0*	69.8	179.7	15.6*	15.6*	73.2	176.8	11.3*	11.3*
140	50	90	62.7	175.0	18.3*	18.2	66.5	175.0	13.8*	13.8*	69.7	172.0	10.5*	10.5*
140	50	100	59.3	169.4	16.4*	15.5	63.0	169.4	12.1*	12.1*	66.1	166.3	9.6*	9.6*
140	50	110	55.7	162.9	14.5*	13.4	59.4	163.0	11.2*	11.2*	62.4	159.8	8.6*	8.6*
140	50	120	52.0	155.6	12.4*	11.6	55.6	155.7	10.3*	10.3*	58.5	152.3	8.2*	8.2*
140	50	130	48.0	147.1	11.1	10.2	51.6	147.3	9.3*	9.3*	54.4	143.6	7.7*	7.7*
140	50	140	43.8	137.3	9.7	8.9	47.4	137.5	8.4*	8.4*	50.0	133.4	7.2*	7.2*
140	50	150	39.3	126.0	8.6	7.8	42.8	126.1	7.9*	7.9*				
140	50	160	34.3	112.5	7.6	6.9	37.6	112.5	7.4*	7.1				
140	50	170	28.5	96.0	6.7	6.1								
140	60	40	79.3	203.2	21.5*	21.5*								
140	60	50	76.4	201.0	20.7*	20.7*								
140	60	60	73.4	198.2	19.9*	19.9*	77.8	197.9	17.7*	17.7*				
140	60	70	70.4	194.9	19.1*	19.1*	74.8	194.7	15.9*	15.9*	78.7	191.6	10.3*	10.3*
140	60	80	67.3	191.0	17.7*	17.7*	71.7	190.9	14.0*	14.0*	75.5	187.7	8.8*	8.8*
140	60	90	64.2	186.4	16.1*	16.1*	68.5	186.5	12.1*	12.1*	72.3	183.2	8.1*	8.1*
140	60	100	61.0	181.2	14.8*	14.8*	65.2	181.3	10.2*	10.2*	68.9	178.0	7.4*	7.4*
140	60	110	57.6	175.2	12.9*	12.9*	61.9	175.4	8.7*	8.7*	65.4	171.9	6.7*	6.7*
140	60	120	54.2	168.3	10.8*	10.8*	58.4	168.7	8.0*	8.0*	61.8	165.0	6.0*	6.0*
140	60	130	50.6	160.6	8.8*	8.8*	54.7	160.9	7.3*	7.3*	58.0	157.1	5.7*	5.7*
140	60	140	46.7	151.7	8.1*	8.1*	50.8	152.1	6.5*	6.5*	54.0	147.9	5.5*	5.5*
140	60	150	42.7	141.6	7.3*	7.3*	46.7	141.9	5.9*	5.9*	49.7	137.3	5.2*	5.2*
140	60	160	38.3	129.8	6.4*	6.4*	42.2	130.1	5.6*	5.6*				
140	60	170	33.4	115.9	5.8*	5.8*	37.2	116.0	5.2*	5.2*				
140	60	180	27.7	98.9	5.4*	5.4*								

LS-238H Tubular Jib Capacities

Capacities shown in thousands of pounds

Boom Length (feet)	Jib Length (feet)	Jib Load Radius (feet)	Jib Angle to Boom													
			0 Degrees				15 Degrees				30 Degrees					
			Boom Angle (deg)	Jib Pt. Height (feet)	ABC+ 20,000# Ctwt.	ABC+0 Ctwt.	Boom Angle (deg)	Jib Pt. Height (feet)	ABC+ 20,000# Ctwt.	ABC+0 Ctwt.	Boom Angle (deg)	Jib Pt. Height (feet)	ABC+ 20,000# Ctwt.	ABC+0 Ctwt.		
140	70	40	79.8	213.6	18.9*	18.9*										
140	70	50	77.1	211.5	18.1*	18.1*										
140	70	60	74.2	208.9	17.4*	17.4*	79.1	208.8	15.5*	15.5*						
140	70	70	71.4	205.8	16.6*	16.6*	76.2	205.8	14.5*	14.5*						
140	70	80	68.5	202.2	15.8*	15.8*	73.3	202.3	13.1*	13.1*	77.7	199.0	9.0*	9.0*		
140	70	90	65.5	197.9	14.3*	14.3*	70.3	198.1	11.8*	11.8*	74.6	194.8	7.8*	7.8*		
140	70	100	62.5	193.0	13.1*	13.1*	67.2	193.4	10.3*	10.3*	71.4	189.9	7.1*	7.1*		
140	70	110	59.4	187.5	12.0*	12.0*	64.1	187.9	8.9*	8.9*	68.2	184.3	6.5*	6.5*		
140	70	120	56.1	181.2	10.8*	10.8*	60.8	181.7	7.7*	7.7*	64.8	177.9	5.8*	5.8*		
140	70	130	52.8	174.0	9.2*	9.2*	57.4	174.6	7.0*	7.0*	61.3	170.6	5.1*	5.1*		
140	70	140	49.3	165.9	7.8*	7.8*	53.9	166.5	6.3*	6.3*	57.6	162.3	4.8*	4.8*		
140	70	150	45.6	156.7	7.0*	7.0*	50.1	157.4	5.5*	5.5*	53.7	152.7	4.5*	4.5*		
140	70	160	41.6	146.2	6.2*	6.2*	46.1	146.8	4.9*	4.9*	49.4	141.7	4.2*	4.2*		
140	70	170	37.3	134.0	5.4*	5.4*	41.7	134.6	4.6*	4.6*						
140	70	180	32.5	119.7	4.8*	4.8*	36.8	120.0	4.3*	4.3*						
140	70	190	27.0	102.2	4.4*	4.4*										
140	70	200	20.2	79.4	4.0*	4.0*										
150	30	35	79.7	183.9	29.9*	29.9*										
150	30	40	78.1	182.9	29.5*	29.5*										
150	30	50	74.8	180.5	28.5*	28.5*	77.3	180.2	25.8*	25.8*	79.4	178.4	21.7*	21.7*		
150	30	60	71.5	177.5	27.6*	27.6*	73.9	177.3	24.9*	24.9*	76.0	175.4	20.2*	20.2*		
150	30	70	68.1	173.8	26.6*	25.3	70.5	173.6	24.0*	24.0*	72.6	171.7	18.9*	18.9*		
150	30	80	64.7	169.4	22.4	21.0	67.0	169.3	22.9	21.6	69.0	167.3	17.8*	17.8*		
150	30	90	61.1	164.2	19.0	17.6	63.4	164.2	19.5	18.1	65.3	162.2	16.9*	16.9*		
150	30	100	57.4	158.2	16.2	15.0	59.7	158.3	16.6	15.4	61.5	156.1	16.1*	15.7		
150	30	110	53.5	151.3	13.9	12.8	55.8	151.4	14.3	13.2	57.6	149.1	14.6	13.5		
150	30	120	49.4	143.4	12.1	11.1	51.7	143.4	12.4	11.4	53.4	141.0	12.6	11.6		
150	30	130	45.1	134.1	10.5	9.6	47.3	134.1	10.8	9.9	48.9	131.5	10.9	10.0		
150	30	140	40.4	123.3	9.2	8.4	42.6	123.3	9.4	8.6						
150	30	150	35.2	110.3	8.1	7.3	37.3	110.2	8.2	7.4						
150	30	160	29.3	94.5	7.1	6.3										
150	30	170	21.9	73.5	6.2	5.5										
150	40	40	78.8	193.0	26.4*	26.4*										
150	40	50	75.7	190.6	25.6*	25.6*	78.7	190.2	23.2*	23.2*						
150	40	60	72.5	187.7	24.8*	24.8*	75.6	187.3	21.8*	21.8*	78.3	184.9	16.7*	16.7*		
150	40	70	69.3	184.2	23.9*	23.9*	72.4	183.9	20.4*	20.4*	75.0	181.4	15.6*	15.6*		
150	40	80	66.1	180.0	22.5	21.2	69.1	179.8	18.9*	18.9*	71.7	177.3	14.7*	14.7*		
150	40	90	62.7	175.1	19.1	17.8	65.7	175.0	17.4*	17.4*	68.2	172.4	13.8*	13.8*		
150	40	100	59.3	169.5	16.3	15.1	62.2	169.5	16.1*	15.7	64.7	166.8	12.7*	12.7*		
150	40	110	55.7	163.1	14.1	13.0	58.6	163.1	14.5	13.5	61.0	160.3	11.8*	11.8*		
150	40	120	52.0	155.7	12.2	11.2	54.9	155.7	12.6	11.6	57.1	152.8	11.4*	11.4*		
150	40	130	48.0	147.3	10.7	9.8	50.9	147.3	11.0	10.1	53.0	144.1	10.9*	10.4		
150	40	140	43.8	137.5	9.3	8.5	46.6	137.5	9.6	8.8	48.6	134.0	9.9	9.0		
150	40	150	39.3	126.2	8.2	7.4	42.0	126.2	8.5	7.7						
150	40	160	34.3	112.7	7.2	6.5	36.9	112.6	7.4	6.7						
150	40	170	28.5	96.2	6.3	5.7										

Boom Length (feet)	Jib Length (feet)	Jib Load Radius (feet)	Jib Angle to Boom											
			0 Degrees				15 Degrees				30 Degrees			
			Boom Angle (deg)	Jib Pt. Height (feet)	ABC+ 20,000# Cwt.	ABC+0 Cwt.	Boom Angle (deg)	Jib Pt. Height (feet)	ABC+ 20,000# Cwt.	ABC+0 Cwt.	Boom Angle (deg)	Jib Pt. Height (feet)	ABC+ 20,000# Cwt.	ABC+0 Cwt.
150	50	40	79.3	203.1	23.9*	23.9*								
150	50	50	76.4	200.9	23.1*	23.1*								
150	50	60	73.4	198.1	22.3*	22.3*	77.1	197.7	19.6*	19.6*				
150	50	70	70.4	194.8	21.5*	21.5*	74.0	194.5	17.9*	17.9*	77.2	191.5	12.4*	12.4*
150	50	80	67.3	190.8	20.2*	20.2*	70.9	190.6	16.2*	16.2*	74.1	187.6	11.6*	11.6*
150	50	90	64.2	186.2	18.7*	17.9	67.8	186.1	14.5*	14.5*	70.8	183.1	10.7*	10.7*
150	50	100	61.0	181.0	16.5	15.3	64.5	180.9	12.7*	12.7*	67.5	177.8	9.9*	9.9*
150	50	110	57.6	175.0	14.2	13.1	61.1	175.0	11.7*	11.7*	64.1	171.8	9.0*	9.0*
150	50	120	54.2	168.1	12.3	11.4	57.6	168.2	10.8*	10.8*	60.5	164.8	8.4*	8.4*
150	50	130	50.6	160.3	10.8	9.9	54.0	160.5	9.9*	9.9*	56.7	156.9	8.0*	8.0*
150	50	140	46.7	151.4	9.5	8.6	50.1	151.6	8.9*	8.9*	52.7	147.7	7.5*	7.5*
150	50	150	42.7	141.3	8.3	7.6	46.0	141.4	8.2*	7.9	48.4	137.1	7.1*	7.1*
150	50	160	38.3	129.5	7.3	6.6	41.5	129.5	7.6	6.9				
150	50	170	33.4	115.5	6.5	5.8	36.5	115.4	6.7	6.0				
150	50	180	27.7	98.5	5.7	5.1								
150	60	40	79.8	213.4	21.6*	21.6*								
150	60	50	77.1	211.3	20.9*	20.9*								
150	60	60	74.2	208.6	20.1*	20.1*	78.4	208.3	18.0*	18.0*				
150	60	70	71.4	205.5	19.3*	19.3*	75.5	205.3	16.4*	16.4*	79.3	202.0	10.6*	10.6*
150	60	80	68.5	201.8	17.8*	17.8*	72.6	201.7	14.6*	14.6*	76.3	198.4	8.9*	8.9*
150	60	90	65.5	197.5	16.3*	16.3*	69.6	197.5	12.8*	12.8*	73.2	194.2	8.3*	8.3*
150	60	100	62.5	192.6	15.0*	15.0*	66.5	192.6	11.0*	11.0*	70.1	189.3	7.7*	7.7*
150	60	110	59.4	186.9	13.8*	13.2	63.4	187.1	9.1*	9.1*	66.8	183.6	7.0*	7.0*
150	60	120	56.1	180.6	11.9*	11.5	60.1	180.8	8.3*	8.3*	63.5	177.2	6.3*	6.3*
150	60	130	52.8	173.4	9.9*	9.9*	56.7	173.7	7.7*	7.7*	60.0	169.8	5.8*	5.8*
150	60	140	49.3	165.2	8.6*	8.6*	53.2	165.5	7.0*	7.0*	56.3	161.5	5.6*	5.6*
150	60	150	45.6	156.0	7.8*	7.7	49.4	156.3	6.2*	6.2*	52.4	151.9	5.3*	5.3*
150	60	160	41.6	145.4	7.0*	6.7	45.4	145.7	5.8*	5.8*	48.2	140.8	5.1*	5.1*
150	60	170	37.3	133.2	6.2*	5.9	41.0	133.4	5.5*	5.5*				
150	60	180	32.5	118.8	5.7*	5.2	36.2	118.8	5.2*	5.2*				
150	60	190	27.0	101.3	5.1	4.5								
150	70	50	77.7	221.8	18.3*	18.3*								
150	70	60	75.0	219.3	17.6*	17.6*	79.6	219.1	15.6*	15.6*				
150	70	70	72.3	216.4	16.9*	16.9*	76.9	216.3	14.8*	14.8*				
150	70	80	69.5	212.9	16.0*	16.0*	74.1	212.9	13.5*	13.5*	78.3	209.5	9.2*	9.2*
150	70	90	66.7	208.9	14.5*	14.5*	71.3	209.0	12.2*	12.2*	75.4	205.6	7.9*	7.9*
150	70	100	63.8	204.3	13.3*	13.3*	68.4	204.5	10.9*	10.9*	72.4	201.0	7.3*	7.3*
150	70	110	60.9	199.0	12.1*	12.1*	65.4	199.4	9.5*	9.5*	69.3	195.7	6.7*	6.7*
150	70	120	57.9	193.1	11.2*	11.2*	62.3	193.5	8.0*	8.0*	66.2	189.8	6.1*	6.1*
150	70	130	54.7	186.4	10.1*	10.1*	59.2	186.9	7.4*	7.4*	62.9	183.0	5.4*	5.4*
150	70	140	51.5	178.9	8.6*	8.6*	55.9	179.5	6.7*	6.7*	59.5	175.3	4.9*	4.9*
150	70	150	48.1	170.4	7.5*	7.5*	52.4	171.0	6.0*	6.0*	55.9	166.6	4.6*	4.6*
150	70	160	44.5	160.8	6.8*	6.8*	48.8	161.4	5.3*	5.3*	52.1	156.6	4.4*	4.4*
150	70	170	40.6	149.9	6.0*	6.0*	44.9	150.5	4.8*	4.8*	48.0	145.0	4.1*	4.1*
150	70	180	36.4	137.4	5.2*	5.2*	40.6	137.8	4.5*	4.5*				
150	70	190	31.8	122.6	4.7*	4.6	35.8	122.8	4.2*	4.2*				
150	70	200	26.4	104.6	4.4*	4.0								

LS-238H Tubular Jib Capacities

Capacities shown in thousands of pounds

Boom Length (feet)	Jib Length (feet)	Jib Load Radius (feet)	Jib Angle to Boom													
			0 Degrees				15 Degrees				30 Degrees					
			Boom Angle (deg)	Jib Pt. Height (feet)	ABC+ 20,000# Ctwt.	ABC+0 Ctwt.	Boom Angle (deg)	Jib Pt. Height (feet)	ABC+ 20,000# Ctwt.	ABC+0 Ctwt.	Boom Angle (deg)	Jib Pt. Height (feet)	ABC+ 20,000# Ctwt.	ABC+0 Ctwt.		
160	30	40	78.8	193.1	29.7*	29.7*										
160	30	50	75.7	190.9	28.8*	28.8*	77.9	190.6	26.0*	26.0*						
160	30	60	72.5	188.0	27.9*	27.9*	74.8	187.8	25.1*	25.1*	76.8	185.9	20.5*	20.5*		
160	30	70	69.3	184.5	26.8	26.8	71.6	184.3	24.3*	24.3*	73.6	182.4	19.2*	19.2*		
160	30	80	66.1	180.4	22.3	20.8	68.3	180.3	22.7	21.4	70.2	178.3	18.1*	18.1*		
160	30	90	62.7	175.6	18.7	17.4	65.0	175.5	19.2	17.9	66.8	173.5	17.2*	17.2*		
160	30	100	59.3	170.0	15.9	14.7	61.5	170.0	16.4	15.2	63.3	167.9	16.4*	15.5		
160	30	110	55.7	163.6	13.7	12.6	57.9	163.6	14.0	13.0	59.6	161.4	14.3	13.3		
160	30	120	52.0	156.3	11.8	10.8	54.1	156.3	12.1	11.1	55.8	154.0	12.4	11.4		
160	30	130	48.0	147.9	10.2	9.3	50.2	147.9	10.5	9.6	51.7	145.4	10.7	9.8		
160	30	140	43.8	138.2	8.9	8.1	45.9	138.2	9.2	8.3	47.3	135.4	9.3	8.5		
160	30	150	39.3	126.9	7.8	7.0	41.3	126.8	8.0	7.2						
160	30	160	34.3	113.5	6.8	6.1	36.2	113.3	6.9	6.2						
160	30	170	28.5	97.0	5.9	5.2										
160	30	180	21.3	75.4	5.2	4.5										
160	40	40	79.3	203.1	26.6*	26.6*										
160	40	50	76.4	200.9	25.8*	25.8*	79.3	200.5	23.3*	23.3*						
160	40	60	73.4	198.2	25.0*	25.0*	76.3	197.8	22.1*	22.1*	78.9	195.3	16.9*	16.9*		
160	40	70	70.4	194.8	24.2*	24.2*	73.3	194.5	20.8*	20.8*	75.8	192.0	15.8*	15.8*		
160	40	80	67.3	190.9	22.3	20.9	70.2	190.7	19.4*	19.4*	72.7	188.1	14.9*	14.9*		
160	40	90	64.2	186.3	18.9	17.5	67.0	186.2	18.0*	18.0*	69.5	183.6	14.2*	14.2*		
160	40	100	61.0	181.1	16.1	14.9	63.8	181.0	16.6*	15.4	66.1	178.3	13.2*	13.2*		
160	40	110	57.6	175.1	13.8	12.7	60.4	175.0	14.3	13.2	62.7	172.3	12.1*	12.1*		
160	40	120	54.2	168.3	11.9	11.0	56.9	168.3	12.4	11.4	59.1	165.3	11.6*	11.6*		
160	40	130	50.6	160.5	10.4	9.5	53.3	160.5	10.8	9.9	55.4	157.4	11.1	10.2		
160	40	140	46.7	151.6	9.1	8.2	49.4	151.7	9.4	8.6	51.4	148.3	9.6	8.8		
160	40	150	42.7	141.5	7.9	7.2	45.3	141.5	8.2	7.4						
160	40	160	38.3	129.7	6.9	6.2	40.8	129.6	7.2	6.4						
160	40	170	33.4	115.7	6.1	5.4	35.9	115.6	6.3	5.6						
160	40	180	27.7	98.7	5.3	4.7										
160	50	40	79.8	213.3	24.0*	24.0*										
160	50	50	77.1	211.2	23.3*	23.3*										
160	50	60	74.2	208.5	22.5*	22.5*	77.7	208.1	19.9*	19.9*						
160	50	70	71.4	205.4	21.8*	21.8*	74.8	205.0	18.3*	18.3*	77.9	202.0	12.8*	12.8*		
160	50	80	68.5	201.6	20.4*	20.4*	71.9	201.4	16.7*	16.7*	74.9	198.4	11.8*	11.8*		
160	50	90	65.5	197.3	18.8*	17.7	68.9	197.1	15.1*	15.1*	71.9	194.1	11.0*	11.0*		
160	50	100	62.5	192.4	16.2	15.0	65.8	192.3	13.4*	13.4*	68.7	189.2	10.2*	10.2*		
160	50	110	59.4	186.7	13.9	12.8	62.7	186.7	12.1*	12.1*	65.5	183.5	9.4*	9.4*		
160	50	120	56.1	180.3	12.1	11.1	59.4	180.4	11.2*	11.2*	62.2	177.0	8.5*	8.5*		
160	50	130	52.8	173.1	10.5	9.6	56.1	173.2	10.4*	10.1	58.7	169.7	8.2*	8.2*		
160	50	140	49.3	164.9	9.2	8.4	52.5	165.1	9.5*	8.8	55.0	161.3	7.8*	7.8*		
160	50	150	45.6	155.7	8.0	7.3	48.8	155.8	8.4	7.6	51.1	151.8	7.4*	7.4*		
160	50	160	41.6	145.1	7.1	6.3	44.7	145.2	7.4	6.6						
160	50	170	37.3	132.9	6.2	5.5	40.4	132.9	6.5	5.8						
160	50	180	32.5	118.5	5.4	4.8	35.5	118.3	5.6	5.0						
160	50	190	27.0	100.9	4.7	4.1										

Boom Length (feet)	Jib Length (feet)	Jib Load Radius (feet)	Jib Angle to Boom											
			0 Degrees				15 Degrees				30 Degrees			
			Boom Angle (deg)	Jib Pt. Height (feet)	ABC+ 20,000# Cwt.	ABC+0 Cwt.	Boom Angle (deg)	Jib Pt. Height (feet)	ABC+ 20,000# Cwt.	ABC+0 Cwt.	Boom Angle (deg)	Jib Pt. Height (feet)	ABC+ 20,000# Cwt.	ABC+0 Cwt.
160	60	50	77.7	221.5	21.0*	21.0*								
160	60	60	75.0	219.0	20.3*	20.3*	78.9	218.6	18.2*	18.2*				
160	60	70	72.3	216.0	19.6*	19.6*	76.2	215.7	16.8*	16.8*	79.8	212.5	10.9*	10.9*
160	60	80	69.5	212.5	18.0*	18.0*	73.4	212.3	15.1*	15.1*	77.0	209.0	9.2*	9.2*
160	60	90	66.7	208.4	16.5*	16.5*	70.6	208.4	13.4*	13.4*	74.1	205.0	8.5*	8.5*
160	60	100	63.8	203.8	15.2*	15.1	67.7	203.8	11.7*	11.7*	71.1	200.4	7.9*	7.9*
160	60	110	60.9	198.5	14.0*	12.9	64.7	198.6	9.9*	9.9*	68.1	195.1	7.3*	7.3*
160	60	120	57.9	192.5	12.2*	11.2	61.7	192.7	8.7*	8.7*	64.9	189.1	6.6*	6.6*
160	60	130	54.7	185.8	10.6*	9.7	58.5	186.0	8.0*	8.0*	61.7	182.2	6.0*	6.0*
160	60	140	51.5	178.2	9.2*	8.4	55.2	178.5	7.4*	7.4*	58.2	174.5	5.7*	5.7*
160	60	150	48.1	169.7	8.1	7.4	51.8	170.0	6.7*	6.7*	54.7	165.7	5.5*	5.5*
160	60	160	44.5	160.1	7.2	6.4	48.1	160.4	5.9*	5.9*	50.9	155.7	5.2*	5.2*
160	60	170	40.6	149.1	6.3	5.6	44.2	149.4	5.7*	5.7*	46.8	144.2	5.0*	5.0*
160	60	180	36.4	136.5	5.5	4.9	40.0	136.7	5.4*	5.2				
160	60	190	31.8	121.7	4.8	4.2	35.2	121.6	5.1	4.5				
160	60	200	26.4	103.6	4.2	3.7								
160	70	50	78.2	232.0	18.4*	18.4*								
160	70	60	75.6	229.7	17.8*	17.8*								
160	70	70	73.1	226.8	17.1*	17.1*	77.5	226.7	15.0*	15.0*				
160	70	80	70.4	223.5	16.1*	16.1*	74.8	223.5	13.9*	13.9*	78.8	220.0	9.4*	9.4*
160	70	90	67.8	219.7	14.7*	14.7*	72.1	219.8	12.6*	12.6*	76.1	216.3	8.2*	8.2*
160	70	100	65.0	215.3	13.4*	13.4*	69.4	215.5	11.3*	11.3*	73.3	211.9	7.5*	7.5*
160	70	110	62.3	210.4	12.3*	12.3*	66.6	210.7	10.0*	10.0*	70.4	207.0	6.9*	6.9*
160	70	120	59.4	204.8	11.3*	11.3	63.7	205.2	8.7*	8.7*	67.4	201.4	6.3*	6.3*
160	70	130	56.5	198.5	10.4*	9.8	60.7	199.0	7.7*	7.7*	64.4	195.0	5.7*	5.7*
160	70	140	53.4	191.5	9.4*	8.5	57.7	192.0	7.1*	7.1*	61.2	187.9	5.1*	5.1*
160	70	150	50.3	183.6	8.0*	7.4	54.5	184.2	6.4*	6.4*	57.8	179.8	4.8*	4.8*
160	70	160	46.9	174.8	7.2	6.5	51.1	175.4	5.7*	5.7*	54.3	170.7	4.5*	4.5*
160	70	170	43.4	164.9	6.4	5.7	47.5	165.4	5.0*	5.0*	50.6	160.3	4.2*	4.2*
160	70	180	39.7	153.6	5.6	5.0	43.7	154.1	4.7*	4.7*	46.6	148.3	3.8*	3.8*
160	70	190	35.6	140.6	4.9	4.3	39.5	141.0	4.4*	4.4*				
160	70	200	31.0	125.4	4.3	3.7	34.9	125.5	4.1*	4.0				
160	70	210	25.8	106.9	3.8	3.2								
170	30	40	79.3	203.3	29.8*	29.8*								
170	30	50	76.4	201.2	29.0*	29.0*	78.6	200.9	26.2*	26.2*				
170	30	60	73.4	198.4	28.1*	28.1*	75.6	198.2	25.4*	25.4*	77.5	196.3	20.7*	20.7*
170	30	70	70.4	195.2	26.6	24.8	72.6	195.0	24.5*	24.5*	74.4	193.0	19.5*	19.5*
170	30	80	67.3	191.3	22.0	20.5	69.5	191.1	22.5	21.1	71.3	189.2	18.4*	18.4*
170	30	90	64.2	186.8	18.5	17.1	66.3	186.7	19.0	17.7	68.1	184.6	17.5*	17.5*
170	30	100	61.0	181.5	15.7	14.5	63.1	181.5	16.1	14.9	64.8	179.4	16.5	15.3
170	30	110	57.6	175.6	13.4	12.3	59.7	175.6	13.8	12.7	61.4	173.4	14.1	13.0
170	30	120	54.2	168.8	11.5	10.5	56.2	168.8	11.9	10.9	57.8	166.5	12.2	11.2
170	30	130	50.6	161.1	10.0	9.1	52.6	161.1	10.3	9.4	54.1	158.7	10.5	9.6
170	30	140	46.7	152.3	8.6	7.8	48.7	152.3	8.9	8.1	50.2	149.6	9.1	8.3
170	30	150	42.7	142.1	7.5	6.7	44.6	142.1	7.7	7.0				
170	30	160	38.3	130.4	6.5	5.8	40.2	130.3	6.7	6.0				
170	30	170	33.4	116.5	5.7	5.0	35.2	116.3	5.8	5.1				
170	30	180	27.7	99.5	4.9	4.2								

LS-238H Tubular Jib Capacities

Capacities shown in thousands of pounds

Boom Length (feet)	Jib Length (feet)	Jib Load Radius (feet)	Jib Angle to Boom													
			0 Degrees				15 Degrees				30 Degrees					
			Boom Angle (deg)	Jib Pt. Height (feet)	ABC+ 20,000# Ctwt.	ABC+0 Ctwt.	Boom Angle (deg)	Jib Pt. Height (feet)	ABC+ 20,000# Ctwt.	ABC+0 Ctwt.	Boom Angle (deg)	Jib Pt. Height (feet)	ABC+ 20,000# Ctwt.	ABC+0 Ctwt.		
170	40	40	79.8	213.3	26.7*	26.7*										
170	40	50	77.1	211.2	26.0*	26.0*	79.8	210.7	23.5*	23.5*						
170	40	60	74.2	208.6	25.2*	25.2*	77.0	208.2	22.4*	22.4*	79.5	205.6	17.1*	17.1*		
170	40	70	71.4	205.4	24.4*	24.4*	74.1	205.1	21.1*	21.1*	76.6	202.5	16.0*	16.0*		
170	40	80	68.5	201.7	22.2	20.7	71.2	201.5	19.8*	19.8*	73.6	198.9	15.2*	15.2*		
170	40	90	65.5	197.4	18.6	17.3	68.2	197.2	18.5*	18.0	70.5	194.6	14.4*	14.4*		
170	40	100	62.5	192.5	15.8	14.6	65.2	192.3	16.4	15.2	67.4	189.6	13.6*	13.6*		
170	40	110	59.4	186.9	13.5	12.5	62.0	186.8	14.1	13.0	64.2	184.0	12.6*	12.6*		
170	40	120	56.1	180.5	11.7	10.7	58.8	180.4	12.1	11.2	60.9	177.5	11.8*	11.5		
170	40	130	52.8	173.3	10.1	9.2	55.4	173.3	10.5	9.6	57.4	170.2	10.9	9.9		
170	40	140	49.3	165.1	8.8	8.0	51.8	165.1	9.1	8.3	53.8	161.9	9.4	8.6		
170	40	150	45.6	155.9	7.7	6.9	48.1	155.9	8.0	7.2	49.9	152.4	8.2	7.4		
170	40	160	41.6	145.3	6.7	5.9	44.1	145.3	6.9	6.2						
170	40	170	37.3	133.1	5.8	5.1	39.7	133.0	6.0	5.3						
170	40	180	32.5	118.7	5.0	4.4	34.9	118.4	5.2	4.6						
170	40	190	27.0	101.2	4.3	3.7										
170	50	50	77.7	221.4	23.4*	23.4*										
170	50	60	75.0	218.9	22.7*	22.7*	78.3	218.4	20.2*	20.2*						
170	50	70	72.3	215.9	22.0*	22.0*	75.5	215.5	18.7*	18.7*	78.5	212.5	13.1*	13.1*		
170	50	80	69.5	212.4	20.5*	20.5*	72.8	212.1	17.2*	17.2*	75.7	209.0	12.0*	12.0*		
170	50	90	66.7	208.3	18.7	17.4	69.9	208.1	15.7*	15.7*	72.8	205.0	11.2*	11.2*		
170	50	100	63.8	203.6	15.9	14.7	67.0	203.5	14.1*	14.1*	69.8	200.3	10.5*	10.5*		
170	50	110	60.9	198.3	13.7	12.6	64.1	198.2	12.5*	12.5*	66.8	195.0	9.7*	9.7*		
170	50	120	57.9	192.3	11.8	10.8	61.0	192.3	11.6*	11.4	63.7	189.0	8.9*	8.9*		
170	50	130	54.7	185.6	10.2	9.3	57.9	185.6	10.7	9.8	60.4	182.1	8.4*	8.4*		
170	50	140	51.5	178.0	8.9	8.1	54.6	178.1	9.4	8.5	57.0	174.4	8.0*	8.0*		
170	50	150	48.1	169.4	7.8	7.0	51.1	169.5	8.2	7.4	53.5	165.6	7.6*	7.6*		
170	50	160	44.5	159.8	6.8	6.1	47.5	159.9	7.1	6.4	49.7	155.7	7.2*	6.7		
170	50	170	40.6	148.8	5.9	5.2	43.6	148.9	6.2	5.5						
170	50	180	36.4	136.2	5.1	4.5	39.3	136.1	5.4	4.8						
170	50	190	31.8	121.3	4.5	3.9	34.6	121.1	4.7	4.1						
170	50	200	26.4	103.3	3.8	3.3										
170	60	50	78.2	231.8	21.2*	21.2*										
170	60	60	75.6	229.4	20.5*	20.5*	79.4	228.9	18.3*	18.3*						
170	60	70	73.1	226.5	19.8*	19.8*	76.8	226.2	17.2*	17.2*						
170	60	80	70.4	223.2	18.1*	18.1*	74.2	222.9	15.6*	15.6*	77.6	219.6	9.6*	9.6*		
170	60	90	67.8	219.3	16.6*	16.6*	71.5	219.2	14.0*	14.0*	74.8	215.8	8.6*	8.6*		
170	60	100	65.0	214.9	15.2*	14.8	68.8	214.8	12.3*	12.3*	72.0	211.4	8.1*	8.1*		
170	60	110	62.3	209.9	13.7	12.7	66.0	209.9	10.6*	10.6*	69.1	206.4	7.5*	7.5*		
170	60	120	59.4	204.3	11.9	10.9	63.1	204.4	8.9*	8.9*	66.2	200.7	6.9*	6.9*		
170	60	130	56.5	197.9	10.3	9.4	60.1	198.1	8.3*	8.3*	63.1	194.4	6.3*	6.3*		
170	60	140	53.4	190.9	9.0	8.2	57.0	191.1	7.7*	7.7*	60.0	187.2	5.8*	5.8*		
170	60	150	50.3	183.0	7.9	7.1	53.8	183.2	7.1*	7.1*	56.7	179.1	5.6*	5.6*		
170	60	160	46.9	174.1	6.9	6.1	50.5	174.4	6.4*	6.4*	53.2	169.9	5.4*	5.4*		
170	60	170	43.4	164.1	6.0	5.3	46.9	164.4	5.9*	5.7	49.5	159.5	5.1*	5.1*		
170	60	180	39.7	152.8	5.2	4.6	43.1	153.0	5.6	4.9						

Boom Length (feet)	Jib Length (feet)	Jib Load Radius (feet)	Jib Angle to Boom													
			0 Degrees				15 Degrees				30 Degrees					
			Boom Angle (deg)	Jib Pt. Height (feet)	ABC+ 20,000# Cwt.	ABC+0 Cwt.	Boom Angle (deg)	Jib Pt. Height (feet)	ABC+ 20,000# Cwt.	ABC+0 Cwt.	Boom Angle (deg)	Jib Pt. Height (feet)	ABC+ 20,000# Cwt.	ABC+0 Cwt.		
170	60	190	35.6	139.7	4.6	4.0										
170	60	200	31.0	124.5	3.9	3.4	38.9	139.8	4.8	4.2						
170	60	210	25.8	106.0	3.4	2.8	34.3	124.3		3.6						
170	70	50	78.7	242.2	18.6*	18.6*										
170	70	60	76.2	240.0	17.9*	17.9*										
170	70	70	73.8	237.3	17.3*	17.3*	78.0	237.1	15.2*	15.2*						
170	70	80	71.3	234.1	16.2*	16.2*	75.5	234.0	14.2*	14.2*	79.3	230.5	9.5*	9.5*		
170	70	90	68.7	230.5	14.8*	14.8*	72.9	230.5	13.0*	13.0*	76.7	226.9	8.5*	8.5*		
170	70	100	66.1	226.3	13.5*	13.5*	70.3	226.4	11.8*	11.8*	74.0	222.8	7.7*	7.7*		
170	70	110	63.5	221.6	12.4*	12.4*	67.7	221.8	10.5*	10.5*	71.3	218.1	7.1*	7.1*		
170	70	120	60.8	216.3	11.4*	11.0	64.9	216.6	9.3*	9.3*	68.5	212.8	6.6*	6.6*		
170	70	130	58.0	210.4	10.4	9.5	62.1	210.8	7.9*	7.9*	65.6	206.9	6.0*	6.0*		
170	70	140	55.2	203.8	9.1	8.2	59.3	204.3	7.4*	7.4*	62.6	200.2	5.4*	5.4*		
170	70	150	52.2	196.5	7.9	7.2	56.3	197.0	6.8*	6.8*	59.6	192.7	4.9*	4.9*		
170	70	160	49.1	188.3	6.9	6.2	53.1	188.8	6.1*	6.1*	56.3	184.2	4.5*	4.5*		
170	70	170	45.9	179.1	6.1	5.4	49.9	179.6	5.5*	5.5*	52.9	174.7	4.1*	4.1*		
170	70	180	42.5	168.8	5.3	4.7	46.4	169.3	4.9*	4.9*	49.3	163.9	3.7*	3.7*		
170	70	190	38.8	157.1	4.6	4.0	42.6	157.6	4.6*	4.4						
170	70	200	34.8	143.8	4.0	3.4	38.6	144.1	4.3	3.7						
170	70	210	30.4	128.1	3.5	2.9	34.0	128.1	3.7	3.2						
170	70	220	25.3	109.2	3.0	2.5										
180	30	40	79.8	213.5	30.0*	30.0*										
180	30	50	77.1	211.4	29.2*	29.2*	79.1	211.1	26.3*	26.3*						
180	30	60	74.2	208.9	28.4*	28.4*	76.3	208.6	25.5*	25.5*	78.1	206.7	21.0*	21.0*		
180	30	70	71.4	205.8	26.3	24.5	73.4	205.5	24.8*	24.8*	75.2	203.6	19.8*	19.8*		
180	30	80	68.5	202.1	21.8	20.3	70.5	201.9	22.2	20.9	72.3	199.9	18.7*	18.7*		
180	30	90	65.5	197.8	18.2	16.9	67.5	197.7	18.8	17.4	69.2	195.7	17.8*	17.8*		
180	30	100	62.5	192.9	15.4	14.2	64.5	192.8	15.9	14.7	66.1	190.8	16.3	15.1		
180	30	110	59.4	187.3	13.1	12.0	61.3	187.3	13.5	12.5	62.9	185.1	13.9	12.8		
180	30	120	56.1	181.0	11.3	10.3	58.1	181.0	11.6	10.6	59.6	178.7	11.9	10.9		
180	30	130	52.8	173.8	9.7	8.8	54.7	173.8	10.0	9.1	56.2	171.5	10.3	9.4		
180	30	140	49.3	165.7	8.4	7.5	51.2	165.7	8.7	7.8	52.6	163.2	8.9	8.0		
180	30	150	45.6	156.5	7.2	6.5	47.4	156.5	7.5	6.7	48.8	153.8	7.7	6.9		
180	30	160	41.6	146.0	6.2	5.5	43.5	146.0	6.5	5.7						
180	30	170	37.3	133.8	5.4	4.7	39.1	133.7	5.6	4.9						
180	30	180	32.5	119.5	4.6	4.0	34.3	119.2	4.7	4.1						
180	30	190	27.0	102.0	3.9	3.3										
180	40	50	77.7	221.5	26.1*	26.1*										
180	40	60	75.0	219.0	25.4*	25.4*	77.6	218.5	22.7*	22.7*	80.0	216.0	17.2*	17.2*		
180	40	70	72.3	216.0	24.7*	24.7	74.9	215.6	21.5*	21.5*	77.2	213.0	16.2*	16.2*		
180	40	80	69.5	212.5	21.9	20.4	72.1	212.2	20.2*	20.2*	74.4	209.5	15.4*	15.4*		
180	40	90	66.7	208.4	18.3	17.0	69.3	208.1	19.0*	17.7	71.5	205.5	14.6*	14.6*		
180	40	100	63.8	203.7	15.5	14.3	66.4	203.5	16.2	15.0	68.6	200.8	13.9*	13.9*		
180	40	110	60.9	198.4	13.3	12.2	63.4	198.3	13.8	12.7	65.5	195.5	13.0*	13.0*		
180	40	120	57.9	192.4	11.4	10.4	60.4	192.4	11.9	10.9	62.4	189.5	12.0*	11.3		
180	40	130	54.7	185.7	9.8	8.9	57.2	185.7	10.3	9.4	59.2	182.7	10.6	9.7		
180	40	140	51.5	178.1	8.5	7.7	53.9	178.1	8.9	8.1	55.8	175.0	9.2	8.4		

LS-238H Tubular Jib Capacities

Capacities shown in thousands of pounds

Boom Length (feet)	Jib Length (feet)	Jib Load Radius (feet)	Jib Angle to Boom											
			0 Degrees				15 Degrees				30 Degrees			
			Boom Angle (deg)	Jib Pt. Height (feet)	ABC+ 20,000# Ctwt.	ABC+0 Ctwt.	Boom Angle (deg)	Jib Pt. Height (feet)	ABC+ 20,000# Ctwt.	ABC+0 Ctwt.	Boom Angle (deg)	Jib Pt. Height (feet)	ABC+ 20,000# Ctwt.	ABC+0 Ctwt.
180	40	150	48.1	169.6	7.4	6.6	50.5	169.6	7.7	6.9	52.3	166.3	8.0	7.2
180	40	160	44.5	160.0	6.4	5.7	46.9	160.0	6.7	6.0	48.6	156.4	6.9	6.2
180	40	170	40.6	149.0	5.5	4.8	43.0	149.0	5.8	5.1				
180	40	180	36.4	136.4	4.7	4.1	38.7	136.3	5.0	4.3				
180	40	190	31.8	121.6	4.1	3.5	34.0	121.3	4.2	3.6				
180	40	200	26.4	103.5	3.5	2.9								
180	50	50	78.2	231.7	23.6*	23.6*								
180	50	60	75.6	229.3	22.9*	22.9*	78.8	228.7	20.5*	20.5*				
180	50	70	73.1	226.4	22.2*	22.2*	76.2	226.0	19.1*	19.1*	79.0	222.9	13.4*	13.4*
180	50	80	70.4	223.0	20.5*	20.5	73.6	222.7	17.7*	17.7*	76.3	219.6	12.1*	12.1*
180	50	90	67.8	219.1	18.5	17.1	70.9	218.9	16.2*	16.2*	73.6	215.8	11.4*	11.4*
180	50	100	65.0	214.7	15.6	14.4	68.1	214.5	14.7*	14.7*	70.8	211.4	10.7*	10.7*
180	50	110	62.3	209.7	13.4	12.3	65.3	209.6	13.2*	13.0	67.9	206.3	10.0*	10.0*
180	50	120	59.4	204.0	11.5	10.5	62.5	204.0	12.0*	11.1	65.0	200.7	9.3*	9.3*
180	50	130	56.5	197.7	10.0	9.0	59.5	197.7	10.5	9.6	62.0	194.3	8.5*	8.5*
180	50	140	53.4	190.6	8.6	7.8	56.4	190.7	9.1	8.3	58.8	187.1	8.2*	8.2*
180	50	150	50.3	182.7	7.5	6.7	53.2	182.8	7.9	7.1	55.5	179.0	7.7*	7.5
180	50	160	46.9	173.8	6.5	5.8	49.9	173.9	6.9	6.1	52.0	169.8	6.8*	6.4
180	50	170	43.4	163.8	5.6	4.9	46.3	163.9	6.0	5.3	48.4	159.5	6.1*	5.5
180	50	180	39.7	152.5	4.9	4.2	42.5	152.5	5.1	4.5				
180	50	190	35.6	139.4	4.2	3.6	38.4	139.3	4.4	3.8				
180	50	200	31.0	124.1	3.6	3.0								
180	50	210	25.8	105.6	3.0	2.5								
180	60	50	78.7	242.0	21.3*	21.3*								
180	60	60	76.2	239.7	20.6*	20.6*	79.9	239.2	18.4*	18.4*				
180	60	70	73.8	237.0	19.9*	19.9*	77.4	236.6	17.4*	17.4*				
180	60	80	71.3	233.8	18.1*	18.1*	74.9	233.5	16.0*	16.0*	78.1	230.1	9.9*	9.9*
180	60	90	68.7	230.1	16.6*	16.6*	72.3	229.9	14.4*	14.4*	75.5	226.5	8.8*	8.8*
180	60	100	66.1	225.9	15.3*	14.5	69.7	225.8	12.9*	12.9*	72.9	222.3	8.2*	8.2*
180	60	110	63.5	221.1	13.5	12.4	67.1	221.1	11.3*	11.3*	70.1	217.6	7.7*	7.7*
180	60	120	60.8	215.8	11.6	10.6	64.3	215.9	9.7*	9.7*	67.3	212.2	7.1*	7.1*
180	60	130	58.0	209.9	10.0	9.1	61.5	210.0	8.6*	8.6*	64.5	206.2	6.5*	6.5*
180	60	140	55.2	203.2	8.7	7.9	58.7	203.4	8.0*	8.0*	61.5	199.5	6.0*	6.0*
180	60	150	52.2	195.8	7.6	6.8	55.7	196.0	7.4*	7.3	58.4	191.9	5.7*	5.7*
180	60	160	49.1	187.6	6.6	5.9	52.5	187.8	6.8*	6.3	55.2	183.5	5.4*	5.4*
180	60	170	45.9	178.4	5.7	5.0	49.3	178.6	6.1	5.4	51.8	174.0	4.8*	4.8*
180	60	180	42.5	168.0	5.0	4.3	45.8	168.3	5.3	4.7	48.2	163.2	4.3*	4.3*
180	60	190	38.8	156.3	4.3	3.7	42.1	156.5	4.6	4.0				
180	60	200	34.8	142.9	3.7	3.1	38.0	142.9	3.9	3.3				
180	60	210	30.4	127.2	3.1	2.6	33.5	127.0	3.3	2.8				
180	60	220	25.3	108.2	2.6	2.1								
180	70	50	79.2	252.4	18.7*	18.7*								
180	70	60	76.8	250.2	18.1*	18.1*								
180	70	70	74.4	247.7	17.4*	17.4*	78.5	247.4	15.3*	15.3*				
180	70	80	72.0	244.7	16.3*	16.3*	76.1	244.5	14.3*	14.3*	79.8	240.9	9.6*	9.6*
180	70	90	69.6	241.2	14.8*	14.8*	73.7	241.1	13.2*	13.2*	77.3	237.5	8.8*	8.8*
180	70	100	67.2	237.2	13.6*	13.6*	71.2	237.3	12.2*	12.2*	74.8	233.6	7.8*	7.8*

Boom Length (feet)	Jib Length (feet)	Jib Load Radius (feet)	Jib Angle to Boom											
			0 Degrees				15 Degrees				30 Degrees			
			Boom Angle (deg)	Jib Pt. Height (feet)	ABC+ 20,000# Cwt.	ABC+0 Cwt.	Boom Angle (deg)	Jib Pt. Height (feet)	ABC+ 20,000# Cwt.	ABC+0 Cwt.	Boom Angle (deg)	Jib Pt. Height (feet)	ABC+ 20,000# Cwt.	ABC+0 Cwt.
180	70	110	64.6	232.7	12.5*	12.5	68.6	232.9	11.0*	11.0*	72.2	229.1	7.3*	7.3*
180	70	120	62.1	227.7	11.5*	10.7	66.1	228.0	9.8*	9.8*	69.5	224.1	6.8*	6.8*
180	70	130	59.5	222.1	10.1	9.2	63.4	222.4	8.5*	8.5*	66.8	218.5	6.2*	6.2*
180	70	140	56.8	215.9	8.8	8.0	60.7	216.3	7.7*	7.7*	64.0	212.2	5.5*	5.5*
180	70	150	54.0	209.0	7.7	6.9	57.9	209.4	7.1*	7.1*	61.1	205.1	4.8*	4.8*
180	70	160	51.1	201.3	6.7	5.9	54.9	201.8	6.5*	6.5	58.0	197.3	4.3*	4.3*
180	70	170	48.1	192.8	5.8	5.1	51.9	193.3	5.9*	5.6	54.9	188.5	3.8*	3.8*
180	70	180	44.9	183.3	5.0	4.4	48.7	183.8	5.3*	4.8	51.5	178.6	3.4*	3.4*
180	70	190	41.6	172.6	4.3	3.7	45.3	173.1	4.7	4.1	48.0	167.4	3.1*	3.1*
180	70	200	38.0	160.6	3.7	3.2	41.7	161.0	4.1	3.5				
180	70	210	34.1	146.9	3.2	2.6	37.7	147.1	3.5	2.9				
180	70	220	29.8	130.8	2.7	2.2	33.2	130.7	2.9	2.4				
180	70	230	24.7	111.4	2.2									
190	30	50	77.7	221.7	29.3*	29.3*	79.6	221.4	26.5*	26.5*				
190	30	60	75.0	219.2	28.6*	28.6*	76.9	219.0	25.7*	25.7*	78.7	217.0	21.2*	21.2*
190	30	70	72.3	216.3	26.0	24.2	74.2	216.0	25.0*	25.0*	75.9	214.1	20.0*	20.0*
190	30	80	69.5	212.8	21.5	20.0	71.4	212.6	22.2	20.7	73.1	210.6	19.0*	19.0*
190	30	90	66.7	208.8	17.9	16.6	68.6	208.6	18.5	17.2	70.3	206.6	18.1*	17.7
190	30	100	63.8	204.1	15.1	13.9	65.7	204.0	15.6	14.4	67.3	202.0	16.1	14.9
190	30	110	60.9	198.9	12.8	11.8	62.8	198.8	13.3	12.2	64.3	196.7	13.7	12.6
190	30	120	57.9	192.9	11.0	10.0	59.7	192.9	11.4	10.4	61.2	190.7	11.7	10.7
190	30	130	54.7	186.2	9.4	8.5	56.6	186.2	9.8	8.9	58.0	183.9	10.0	9.1
190	30	140	51.5	178.7	8.1	7.3	53.3	178.7	8.4	7.6	54.7	176.3	8.6	7.8
190	30	150	48.1	170.2	7.0	6.2	49.9	170.2	7.2	6.4	51.2	167.6	7.4	6.6
190	30	160	44.5	160.6	6.0	5.2	46.2	160.6	6.2	5.5	47.5	157.8	6.4	5.6
190	30	170	40.6	149.7	5.1	4.4	42.4	149.7	5.3	4.6				
190	30	180	36.4	137.1	4.3	3.7	38.1	137.0	4.5	3.9				
190	30	190	31.8	122.3	3.6	3.0	33.4	122.1	3.8	3.2				
190	30	200	26.4	104.3	3.0	2.5								
190	40	50	78.2	231.7	26.3*	26.3*								
190	40	60	75.6	229.3	25.6*	25.6*	78.2	228.9	22.9*	22.9*				
190	40	70	73.1	226.5	24.9*	24.4	75.6	226.1	21.8*	21.8*	77.8	223.5	16.4*	16.4*
190	40	80	70.4	223.1	21.7	20.1	72.9	222.8	20.6*	20.6*	75.1	220.2	15.6*	15.6*
190	40	90	67.8	219.2	18.1	16.7	70.2	219.0	18.9	17.5	72.4	216.3	14.8*	14.8*
190	40	100	65.0	214.8	15.3	14.1	67.5	214.6	15.9	14.7	69.6	211.9	14.1*	14.1*
190	40	110	62.3	209.8	13.0	11.9	64.7	209.7	13.6	12.5	66.8	206.9	13.4*	13.0
190	40	120	59.4	204.2	11.1	10.1	61.8	204.1	11.6	10.7	63.8	201.2	12.1	11.1
190	40	130	56.5	197.9	9.6	8.7	58.9	197.8	10.0	9.1	60.8	194.8	10.4	9.5
190	40	140	53.4	190.8	8.2	7.4	55.8	190.7	8.6	7.8	57.7	187.7	9.0	8.1
190	40	150	50.3	182.9	7.1	6.3	52.6	182.8	7.5	6.7	54.4	179.6	7.7	7.0
190	40	160	46.9	174.0	6.1	5.4	49.3	174.0	6.4	5.7	51.0	170.5	6.7	5.9
190	40	170	43.4	164.0	5.2	4.6	45.7	164.0	5.5	4.8	47.3	160.2	5.7	5.0
190	40	180	39.7	152.7	4.5	3.8	41.9	152.6	4.7	4.1				
190	40	190	35.6	139.6	3.8	3.2	37.8	139.5	4.0	3.4				
190	40	200	31.0	124.4	3.2	2.6								
190	40	210	25.8	105.8	2.6	2.1								

LS-238H Tubular Jib Capacities

Capacities shown in thousands of pounds

Boom Length (feet)	Jib Length (feet)	Jib Load Radius (feet)	Jib Angle to Boom														
			0 Degrees				15 Degrees				30 Degrees						
			Boom Angle (deg)	Jib Pt. Height (feet)	ABC+ 20,000# Cwt.	ABC+0 Cwt.	Boom Angle (deg)	Jib Pt. Height (feet)	ABC+ 20,000# Cwt.	ABC+0 Cwt.	Boom Angle (deg)	Jib Pt. Height (feet)	ABC+ 20,000# Cwt.	ABC+0 Cwt.			
190	50	50	78.7	241.9	23.7*	23.7*											
190	50	60	76.2	239.6	23.1*	23.1*	79.3	239.0	20.7*	20.7*							
190	50	70	73.8	236.9	22.4*	22.4*	76.8	236.4	19.4*	19.4*	79.5	233.3	13.6*	13.6*			
190	50	80	71.3	233.6	20.5*	20.3	74.3	233.3	18.1*	18.1*	76.9	230.1	12.3*	12.3*			
190	50	90	68.7	229.9	18.2	16.8	71.7	229.6	16.7*	16.7*	74.3	226.5	11.6*	11.6*			
190	50	100	66.1	225.7	15.4	14.2	69.1	225.5	15.2*	15.0	71.7	222.3	11.0*	11.0*			
190	50	110	63.5	221.0	13.1	12.0	66.5	220.8	13.8*	12.8	69.0	217.6	10.3*	10.3*			
190	50	120	60.8	215.6	11.2	10.3	63.7	215.5	11.9	10.9	66.2	212.2	9.6*	9.6*			
190	50	130	58.0	209.6	9.7	8.8	60.9	209.6	10.3	9.4	63.3	206.2	8.8*	8.8*			
190	50	140	55.2	203.0	8.3	7.5	58.1	203.0	8.9	8.0	60.4	199.4	8.1*	8.1*			
190	50	150	52.2	195.6	7.2	6.4	55.1	195.6	7.7	6.9	57.3	191.9	7.1*	7.1*			
190	50	160	49.1	187.3	6.2	5.5	52.0	187.4	6.6	5.9	54.1	183.4	6.4*	6.4*			
190	50	170	45.9	178.1	5.3	4.7	48.7	178.1	5.7	5.0	50.7	173.9	5.8*	5.3			
190	50	180	42.5	167.7	4.6	3.9	45.2	167.8	4.9	4.3							
190	50	190	38.8	156.0	3.9	3.3	41.5	156.0	4.2	3.6							
190	50	200	34.8	142.6	3.3	2.7	37.5	142.4	3.5	2.9							
190	50	210	30.4	126.9	2.7	2.2											
190	50	220	25.3	107.9	2.2												
190	60	50	79.2	252.2	21.4*	21.4*											
190	60	60	76.8	250.0	20.8*	20.8*											
190	60	70	74.4	247.4	19.8*	19.8*	77.9	246.9	17.4*	17.4*							
190	60	80	72.0	244.3	18.1*	18.1*	75.5	244.0	16.1*	16.1*	78.6	240.5	10.2*	10.2*			
190	60	90	69.6	240.8	16.7*	16.7*	73.1	240.6	14.9*	14.9*	76.2	237.1	8.9*	8.9*			
190	60	100	67.2	236.8	15.3*	14.3	70.6	236.6	13.4*	13.4*	73.6	233.1	8.4*	8.4*			
190	60	110	64.6	232.3	13.2	12.1	68.1	232.2	11.9*	11.9*	71.0	228.6	7.9*	7.9*			
190	60	120	62.1	227.2	11.3	10.3	65.5	227.2	10.3*	10.3*	68.4	223.6	7.3*	7.3*			
190	60	130	59.5	221.6	9.8	8.9	62.8	221.6	8.9*	8.9*	65.7	217.9	6.8*	6.8*			
190	60	140	56.8	215.3	8.4	7.6	60.1	215.4	8.3*	8.2	62.9	211.6	6.2*	6.2*			
190	60	150	54.0	208.4	7.3	6.5	57.3	208.5	7.8*	7.1	60.0	204.5	5.7*	5.7*			
190	60	160	51.1	200.6	6.3	5.6	54.4	200.9	6.8	6.1	57.0	196.6	5.1*	5.1*			
190	60	170	48.1	192.1	5.4	4.8	51.3	192.3	5.9	5.2	53.8	187.8	4.5*	4.5*			
190	60	180	44.9	182.5	4.7	4.0	48.1	182.8	5.1	4.4	50.5	177.9	4.1*	4.1*			
190	60	190	41.6	171.9	4.0	3.4	44.7	172.0	4.3	3.7	47.0	166.8	3.7*	3.7*			
190	60	200	38.0	159.8	3.4	2.8	41.1	159.9	3.7	3.1							
190	60	210	34.1	146.0	2.8	2.3	37.1	146.0	3.1	2.5							
190	60	220	29.8	129.9	2.3												
190	70	50	79.6	262.6	18.8*	18.8*											
190	70	60	77.3	260.5	18.2*	18.2*											
190	70	70	75.1	258.0	17.6*	17.6*	79.0	257.7	15.4*	15.4*							
190	70	80	72.8	255.2	16.3*	16.3*	76.7	254.9	14.3*	14.3*							
190	70	90	70.4	251.8	14.8*	14.8*	74.3	251.7	13.2*	13.2*	77.8	248.0	9.0*	9.0*			
190	70	100	68.1	248.0	13.6*	13.6*	71.9	248.0	12.2*	12.2*	75.4	244.3	7.9*	7.9*			
190	70	110	65.7	243.8	12.5*	12.2	69.5	243.8	11.3*	11.3*	72.9	240.1	7.4*	7.4*			
190	70	120	63.2	239.0	11.4	10.4	67.1	239.2	10.2*	10.2*	70.4	235.3	6.8*	6.8*			
190	70	130	60.7	233.7	9.8	8.9	64.6	233.9	9.1*	9.1*	67.8	230.0	5.9*	5.9*			
190	70	140	58.2	227.8	8.5	7.7	62.0	228.1	7.9*	7.9*	65.2	224.0	5.2*	5.2*			
190	70	150	55.6	221.2	7.4	6.6	59.3	221.6	7.4*	7.2	62.4	217.4	4.5*	4.5*			
190	70	160	52.8	214.0	6.4	5.7	56.6	214.4	6.8*	6.2	59.6	210.0	4.0*	4.0*			

Boom Length (feet)	Jib Length (feet)	Jib Load Radius (feet)	Jib Angle to Boom											
			0 Degrees				15 Degrees				30 Degrees			
			Boom Angle (deg)	Jib Pt. Height (feet)	ABC+ 20,000# Ctwt.	ABC+0 Ctwt.	Boom Angle (deg)	Jib Pt. Height (feet)	ABC+ 20,000# Ctwt.	ABC+0 Ctwt.	Boom Angle (deg)	Jib Pt. Height (feet)	ABC+ 20,000# Ctwt.	ABC+0 Ctwt.
190	70	170	50.0	206.0	5.5	4.8	53.7	206.5	6.0	5.3	56.6	201.8	3.6*	3.6*
190	70	180	47.1	197.2	4.7	4.1	50.7	197.7	5.2	4.6	53.6	192.7	3.3*	3.3*
190	70	190	44.0	187.4	4.1	3.5	47.6	187.8	4.5	3.9	50.3	182.4	3.0*	3.0*
190	70	200	40.7	176.4	3.4	2.9	44.3	176.8	3.8	3.2	46.8	170.9	2.7*	2.7*
190	70	210	37.2	164.0	2.9	2.3	40.7	164.3	3.2	2.7				
190	70	220	33.4	149.9	2.4		36.8	150.0	2.7					
200	30	50	78.2	231.9	29.5*	29.5*								
200	30	60	75.6	229.6	28.8*	28.8*	77.5	229.3	25.9*	25.9*	79.2	227.3	21.4*	21.4*
200	30	70	73.1	226.8	25.7	24.0	74.9	226.5	25.2*	24.8	76.6	224.5	20.3*	20.3*
200	30	80	70.4	223.4	21.3	19.7	72.3	223.2	22.0	20.5	73.9	221.3	19.2*	19.2*
200	30	90	67.8	219.6	17.7	16.3	69.6	219.4	18.3	16.9	71.2	217.4	18.3*	17.5
200	30	100	65.0	215.2	14.8	13.6	66.9	215.1	15.4	14.2	68.4	213.0	15.9	14.7
200	30	110	62.3	210.3	12.6	11.5	64.1	210.2	13.1	12.0	65.6	208.1	13.5	12.4
200	30	120	59.4	204.7	10.7	9.7	61.2	204.6	11.1	10.1	62.7	202.4	11.5	10.5
200	30	130	56.5	198.4	9.1	8.2	58.3	198.3	9.5	8.6	59.7	196.1	9.8	8.9
200	30	140	53.4	191.3	7.8	7.0	55.2	191.3	8.1	7.3	56.6	189.0	8.4	7.6
200	30	150	50.3	183.5	6.7	5.9	52.0	183.5	7.0	6.2	53.3	180.9	7.2	6.4
200	30	160	46.9	174.6	5.7	5.0	48.7	174.6	5.9	5.2	49.9	171.9	6.1	5.4
200	30	170	43.4	164.7	4.8	4.1	45.1	164.7	5.0	4.4	46.3	161.7	5.2	4.5
200	30	180	39.7	153.4	4.1	3.4	41.3	153.3	4.2	3.6				
200	30	190	35.6	140.4	3.4	2.8	37.2	140.2	3.5	2.9				
200	30	200	31.0	125.1	2.8	2.2								
200	30	210	25.8	106.7	2.2									
200	40	50	78.7	241.9	26.4*	26.4*								
200	40	60	76.2	239.7	25.7*	25.7*	78.7	239.2	23.1*	23.1*				
200	40	70	73.8	236.9	25.1*	24.1	76.2	236.5	22.0*	22.0*	78.3	233.9	16.6*	16.6*
200	40	80	71.3	233.7	21.4	19.9	73.7	233.4	20.9*	20.8	75.8	230.7	15.7*	15.7*
200	40	90	68.7	230.0	17.8	16.5	71.1	229.7	18.6	17.3	73.2	227.1	15.0*	15.0*
200	40	100	66.1	225.8	15.0	13.8	68.5	225.6	15.7	14.5	70.5	222.9	14.3*	14.3*
200	40	110	63.5	221.1	12.7	11.6	65.9	220.9	13.3	12.3	67.8	218.1	13.4*	12.8
200	40	120	60.8	215.7	10.8	9.9	63.1	215.6	11.4	10.4	65.1	212.8	11.9	10.9
200	40	130	58.0	209.8	9.3	8.4	60.4	209.7	9.8	8.9	62.2	206.8	10.2	9.3
200	40	140	55.2	203.1	8.0	7.1	57.5	203.1	8.4	7.6	59.3	200.0	8.8	7.9
200	40	150	52.2	195.7	6.8	6.0	54.5	195.7	7.2	6.4	56.2	192.5	7.5	6.7
200	40	160	49.1	187.5	5.8	5.1	51.4	187.5	6.2	5.4	53.0	184.1	6.4	5.7
200	40	170	45.9	178.3	5.0	4.3	48.1	178.2	5.3	4.6	49.7	174.7	5.5	4.8
200	40	180	42.5	167.9	4.2	3.5	44.6	167.9	4.5	3.8				
200	40	190	38.8	156.2	3.5	2.9	40.9	156.1	3.7	3.1				
200	40	200	34.8	142.8	2.9	2.3	36.9	142.6	3.1	2.5				
200	40	210	30.4	127.1	2.3									
200	50	50	79.2	252.1	23.8*	23.8*								
200	50	60	76.8	249.9	23.2*	23.2*	79.7	249.3	20.8*	20.8*				
200	50	70	74.4	247.3	22.6*	22.6*	77.3	246.8	19.6*	19.6*	80.0	243.6	13.9*	13.9*
200	50	80	72.0	244.2	20.4*	20.0	74.9	243.8	18.3*	18.3*	77.5	240.6	12.5*	12.5*
200	50	90	69.6	240.7	17.9	16.6	72.5	240.3	17.0*	17.0*	75.0	237.1	11.8*	11.8*
200	50	100	67.2	236.6	15.1	13.9	70.0	236.4	15.7*	14.8	72.5	233.2	11.2*	11.2*
200	50	110	64.6	232.1	12.8	11.7	67.5	231.9	13.6	12.5	69.9	228.6	10.5*	10.5*

LS-238H Tubular Jib Capacities

Capacities shown in thousands of pounds

Boom Length (feet)	Jib Length (feet)	Jib Load Radius (feet)	Jib Angle to Boom											
			0 Degrees				15 Degrees				30 Degrees			
			Boom Angle (deg)	Jib Pt. Height (feet)	ABC+ 20,000# Ctw.	ABC+0 Ctw.	Boom Angle (deg)	Jib Pt. Height (feet)	ABC+ 20,000# Ctw.	ABC+0 Ctw.	Boom Angle (deg)	Jib Pt. Height (feet)	ABC+ 20,000# Ctw.	ABC+0 Ctw.
200	50	120	62.1	227.0	11.0	10.0	64.9	226.9	11.6	10.7	67.3	223.6	9.7*	9.7*
200	50	130	59.5	221.4	9.4	8.5	62.3	221.3	10.0	9.1	64.6	217.9	8.5*	8.5*
200	50	140	56.8	215.1	8.1	7.2	59.5	215.0	8.6	7.8	61.8	211.5	7.5*	7.5*
200	50	150	54.0	208.1	6.9	6.1	56.7	208.1	7.4	6.6	58.9	204.5	6.7*	6.7*
200	50	160	51.1	200.4	5.9	5.2	53.8	200.4	6.4	5.6	55.9	196.6	6.0*	6.0
200	50	170	48.1	191.8	5.1	4.4	50.8	191.8	5.5	4.8	52.8	187.8	5.4*	5.1
200	50	180	44.9	182.2	4.3	3.7	47.6	182.3	4.6	4.0	49.5	177.9	4.7*	4.3
200	50	190	41.6	171.6	3.6	3.0	44.2	171.6	3.9	3.3				
200	50	200	38.0	159.5	3.0	2.4	40.6	159.4	3.3	2.7				
200	50	210	34.1	145.7	2.4		36.6	145.5	2.7					
200	60	50	79.6	262.4	21.5*	21.5*								
200	60	60	77.3	260.3	20.9*	20.9*								
200	60	70	75.1	257.8	19.7*	19.7*	78.4	257.3	17.3*	17.3*				
200	60	80	72.8	254.8	18.1*	18.1*	76.1	254.4	16.1*	16.1*	79.1	251.0	10.5*	10.5*
200	60	90	70.4	251.5	16.6*	16.6*	73.8	251.2	14.9*	14.9*	76.7	247.7	9.1*	9.1*
200	60	100	68.1	247.6	15.2	14.0	71.4	247.4	13.8*	13.8*	74.3	243.9	8.5*	8.5*
200	60	110	65.7	243.3	12.9	11.8	69.0	243.2	12.4*	12.4*	71.8	239.6	8.0*	8.0*
200	60	120	63.2	238.5	11.0	10.1	66.5	238.4	11.0*	10.9	69.3	234.8	7.5*	7.5*
200	60	130	60.7	233.1	9.5	8.6	64.0	233.2	9.5*	9.3	66.7	229.4	6.8*	6.8*
200	60	140	58.2	227.2	8.2	7.3	61.4	227.3	8.6*	8.0	64.1	223.4	6.0*	6.0*
200	60	150	55.6	220.6	7.0	6.2	58.8	220.8	7.6	6.8	61.4	216.7	5.3*	5.3*
200	60	160	52.8	213.4	6.0	5.3	56.0	213.5	6.6	5.8	58.6	209.4	4.8*	4.8*
200	60	170	50.0	205.3	5.2	4.5	53.2	205.5	5.6	4.9	55.6	201.1	4.2*	4.2*
200	60	180	47.1	196.5	4.4	3.7	50.2	196.7	4.8	4.2	52.5	192.0	3.8*	3.8*
200	60	190	44.0	186.6	3.7	3.1	47.1	186.8	4.1	3.5	49.3	181.8	3.5*	3.5*
200	60	200	40.7	175.6	3.1	2.5	43.8	175.7	3.4	2.8				
200	60	210	37.2	163.2	2.5	2.0	40.2	163.2	2.8	2.3				
200	60	220	33.4	149.0	2.0		36.3	148.9	2.3					
200	70	50	80.0	272.7	18.9*	18.9*								
200	70	60	77.8	270.8	18.3*	18.3*								
200	70	70	75.6	268.4	17.8*	17.8*	79.4	268.0	15.5*	15.5*				
200	70	80	73.4	265.6	16.2*	16.2*	77.2	265.3	14.2*	14.2*				
200	70	90	71.2	262.4	14.8*	14.8*	74.9	262.3	13.2*	13.2*	78.3	258.5	9.2*	9.2*
200	70	100	68.9	258.8	13.6*	13.6*	72.7	258.7	12.2*	12.2*	76.0	255.0	8.2*	8.2*
200	70	110	66.6	254.7	12.5*	11.9	70.4	254.7	11.3*	11.3*	73.6	250.9	7.4*	7.4*
200	70	120	64.3	250.1	11.1	10.1	68.0	250.2	10.3*	10.3*	71.2	246.4	6.5*	6.5*
200	70	130	61.9	245.1	9.6	8.7	65.6	245.3	9.2*	9.2*	68.8	241.3	5.6*	5.6*
200	70	140	59.5	239.4	8.2	7.4	63.1	239.7	8.1*	8.2	66.2	235.6	5.0*	5.0*
200	70	150	57.0	233.2	7.1	6.3	60.6	233.6	7.3*	7.0	63.6	229.4	4.4*	4.4*
200	70	160	54.4	226.4	6.1	5.4	58.0	226.8	6.5*	6.0	61.0	222.4	3.9*	3.9*
200	70	170	51.8	218.9	5.2	4.5	55.4	219.3	5.8	5.1	58.2	214.7	3.5*	3.5*
200	70	180	49.0	210.6	4.5	3.8	52.6	211.1	5.0	4.3	55.3	206.2	3.1*	3.1*
200	70	190	46.2	201.5	3.8	3.2	49.7	201.9	4.2	3.6	52.3	196.7	2.7*	2.7*
200	70	200	43.1	191.4	3.2	2.6	46.6	191.8	3.6	3.0	49.1	186.2	2.5*	2.5*
200	70	210	39.9	180.1	2.6	2.1	43.3	180.4	3.0	2.4	45.7	174.2	2.2*	2.2*
200	70	220	36.5	167.4	2.1		39.9	167.6	2.4					

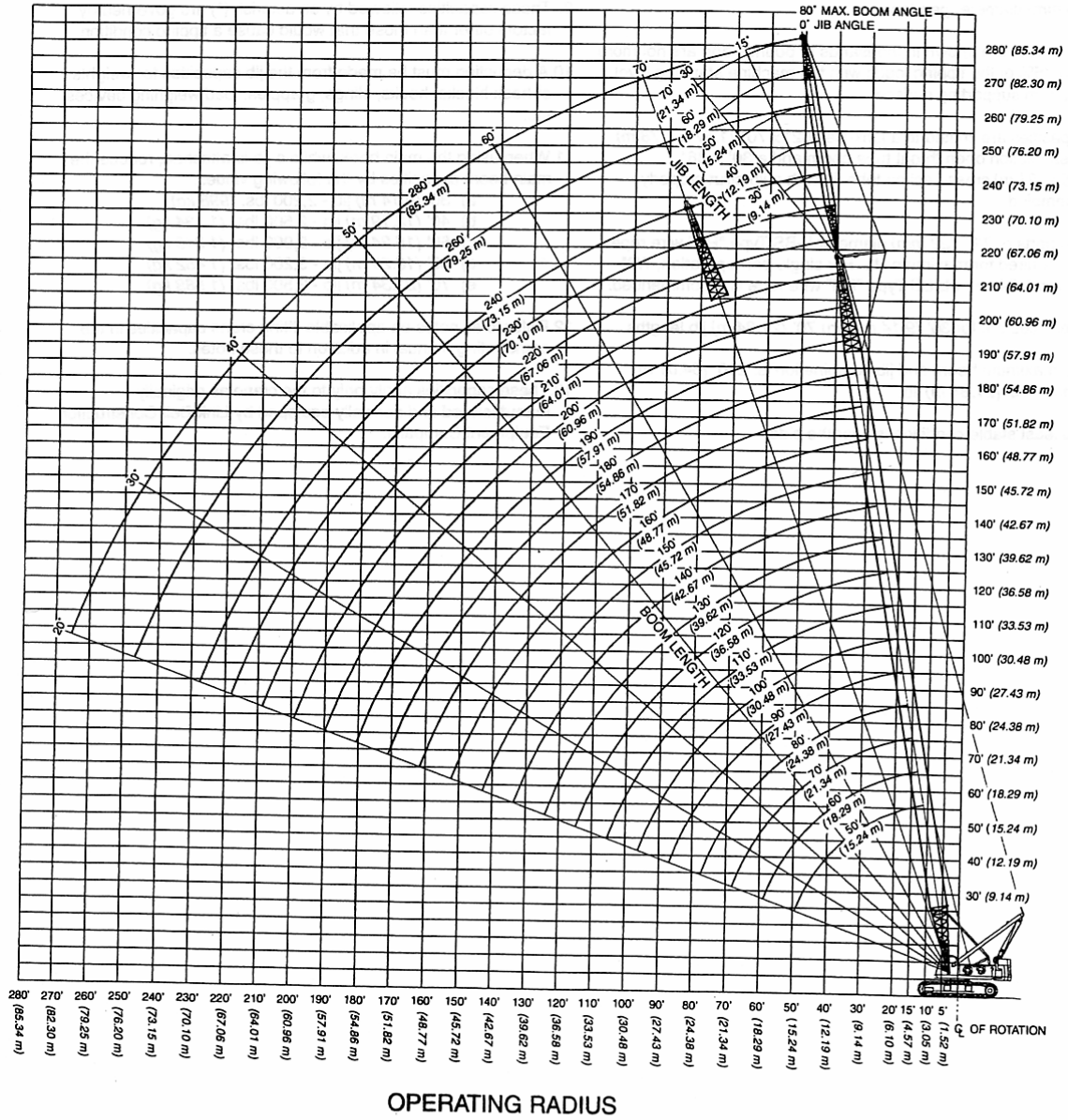
Boom Length (feet)	Jib Length (feet)	Jib Load Radius (feet)	Jib Angle to Boom													
			0 Degrees				15 Degrees				30 Degrees					
			Boom Angle (deg)	Jib Pt. Height (feet)	ABC+ 20,000# Cwt.	ABC+0 Cwt.	Boom Angle (deg)	Jib Pt. Height (feet)	ABC+ 20,000# Cwt.	ABC+0 Cwt.	Boom Angle (deg)	Jib Pt. Height (feet)	ABC+ 20,000# Cwt.	ABC+0 Cwt.		
210	30	50	78.7	242.1	29.6*	29.6*										
210	30	60	76.2	239.9	28.9*	28.9*	78.1	239.6	26.0*	26.0*	79.7	237.6	21.6*	21.6*		
210	30	70	73.8	237.2	25.5	23.7	75.6	236.9	25.3*	24.6	77.2	234.9	20.5*	20.5*		
210	30	80	71.3	234.0	21.0	19.5	73.1	233.8	21.8	20.2	74.6	231.8	19.5*	19.5*		
210	30	90	68.7	230.4	17.4	16.1	70.5	230.2	18.1	16.7	72.0	228.2	18.6*	17.3		
210	30	100	66.1	226.2	14.6	13.4	67.9	226.1	15.1	14.0	69.4	224.0	15.6	14.4		
210	30	110	63.5	221.5	12.3	11.2	65.3	221.4	12.8	11.7	66.7	219.3	13.2	12.1		
210	30	120	60.8	216.2	10.4	9.5	62.6	216.1	10.9	9.9	64.0	214.0	11.2	10.3		
210	30	130	58.0	210.3	8.9	8.0	59.8	210.2	9.3	8.4	61.1	208.0	9.6	8.7		
210	30	140	55.2	203.7	7.5	6.7	56.9	203.6	7.9	7.1	58.2	201.3	8.2	7.3		
210	30	150	52.2	196.3	6.4	5.6	53.9	196.3	6.7	5.9	55.2	193.8	6.9	6.2		
210	30	160	49.1	188.1	5.4	4.7	50.8	188.1	5.7	5.0	52.0	185.5	5.9	5.2		
210	30	170	45.9	178.9	4.5	3.9	47.5	178.9	4.8	4.1	48.7	176.1	5.0	4.3		
210	30	180	42.5	168.6	3.8	3.1	44.1	168.6	4.0	3.3						
210	30	190	38.8	156.9	3.1	2.5	40.4	156.8	3.3	2.7						
210	30	200	34.8	143.5	2.5		36.4	143.4	2.6							
210	40	50	79.2	252.1	26.5*	26.5*										
210	40	60	76.8	250.0	25.9*	25.9*	79.1	249.4	23.3*	23.3*						
210	40	70	74.4	247.3	25.3*	23.8	76.8	246.9	22.3*	22.3*	78.8	244.2	16.7*	16.7*		
210	40	80	72.0	244.3	21.1	19.6	74.3	243.9	21.0*	20.6	76.4	241.2	15.9*	15.9*		
210	40	90	69.6	240.8	17.5	16.2	71.9	240.4	18.4	17.1	73.9	237.7	15.2*	15.2*		
210	40	100	67.2	236.7	14.7	13.5	69.4	236.5	15.5	14.3	71.4	233.7	14.1*	14.1*		
210	40	110	64.6	232.2	12.4	11.4	66.9	232.0	13.1	12.0	68.8	229.2	12.4*	12.4*		
210	40	120	62.1	227.1	10.6	9.6	64.3	227.0	11.2	10.2	66.2	224.2	10.9*	10.7		
210	40	130	59.5	221.5	9.0	8.1	61.7	221.4	9.5	8.6	63.5	218.5	9.6*	9.1		
210	40	140	56.8	215.2	7.7	6.8	59.0	215.1	8.1	7.3	60.7	212.1	8.5	7.7		
210	40	150	54.0	208.3	6.5	5.8	56.2	208.2	6.9	6.2	57.9	205.1	7.3	6.5		
210	40	160	51.1	200.5	5.5	4.8	53.3	200.5	5.9	5.2	54.9	197.2	6.2	5.5		
210	40	170	48.1	192.0	4.7	4.0	50.2	191.9	5.0	4.3	51.8	188.5	5.2	4.6		
210	40	180	44.9	182.4	3.9	3.3	47.0	182.4	4.2	3.6	48.5	178.7	4.4	3.8		
210	40	190	41.6	171.7	3.2	2.6	43.7	171.7	3.5	2.9						
210	40	200	38.0	159.7	2.6	2.0	40.0	159.5	2.8	2.2						
210	40	210	34.1	145.9	2.1		36.1	145.6	2.2							
210	50	50	79.6	262.3	24.0*	24.0*										
210	50	60	77.3	260.2	23.4*	23.4*										
210	50	70	75.1	257.7	22.7*	22.7*	77.8	257.1	19.5*	19.5*						
210	50	80	72.8	254.7	20.2*	19.7	75.5	254.2	18.2*	18.2*	78.0	251.1	12.8*	12.8*		
210	50	90	70.4	251.3	17.6	16.3	73.2	250.9	17.0*	17.0*	75.6	247.7	12.0*	12.0*		
210	50	100	68.1	247.5	14.8	13.6	70.8	247.2	15.7	14.6	73.2	243.9	11.4*	11.4*		
210	50	110	65.7	243.1	12.5	11.5	68.4	242.9	13.4	12.3	70.8	239.6	10.2*	10.2*		
210	50	120	63.2	238.3	10.7	9.7	66.0	238.1	11.4	10.4	68.3	234.8	8.9*	8.9*		
210	50	130	60.7	232.9	9.1	8.2	63.4	232.8	9.8	8.9	65.7	229.4	8.0*	8.0*		
210	50	140	58.2	227.0	7.8	6.9	60.9	226.9	8.4	7.5	63.1	223.4	7.0*	7.0*		
210	50	150	55.6	220.4	6.6	5.9	58.2	220.4	7.2	6.4	60.3	216.7	6.2*	6.2*		
210	50	160	52.8	213.1	5.6	4.9	55.5	213.1	6.1	5.4	57.5	209.3	5.5*	5.5*		
210	50	170	50.0	205.1	4.8	4.1	52.6	205.1	5.2	4.5	54.6	201.1	5.0*	4.8		
210	50	180	47.1	196.2	4.0	3.4	49.7	196.2	4.4	3.7	51.6	192.0	4.4*	4.0		
210	50	190	44.0	186.3	3.3	2.7	46.5	186.3	3.7	3.1	48.3	181.8	3.9	3.3		

LS-238H Tubular Jib Capacities

Capacities shown in thousands of pounds

Boom Length (feet)	Jib Length (feet)	Jib Load Radius (feet)	Jib Angle to Boom											
			0 Degrees				15 Degrees				30 Degrees			
			Boom Angle (deg)	Jib Pt. Height (feet)	ABC+ 20,000# Cwt.	ABC+0 Cwt.	Boom Angle (deg)	Jib Pt. Height (feet)	ABC+ 20,000# Cwt.	ABC+0 Cwt.	Boom Angle (deg)	Jib Pt. Height (feet)	ABC+ 20,000# Cwt.	ABC+0 Cwt.
210	50	200	40.7	175.3	2.7	2.1	43.2	175.3	3.0	2.4				
210	50	210	37.2	162.9	2.2		39.7	162.8	2.4					
210	60	50	80.0	272.5	21.6*	21.6*								
210	60	60	77.8	270.5	21.1*	21.1*								
210	60	70	75.6	268.1	19.6*	19.6*	78.9	267.6	17.2*	17.2*				
210	60	80	73.4	265.3	17.9*	17.9*	76.6	264.9	16.0*	16.0*	79.5	261.3	10.8*	10.8*
210	60	90	71.2	262.1	16.5*	16.4	74.4	261.7	14.8*	14.8*	77.3	258.2	9.4*	9.4*
210	60	100	68.9	258.4	14.9	13.7	72.1	258.1	13.8*	13.8*	74.9	254.6	8.6*	8.6*
210	60	110	66.6	254.3	12.6	11.6	69.8	254.1	12.3*	12.3*	72.6	250.5	8.2*	8.2*
210	60	120	64.3	249.7	10.8	9.8	67.5	249.6	10.9*	10.6	70.2	245.9	7.4*	7.4*
210	60	130	61.9	244.6	9.2	8.3	65.1	244.5	9.7*	9.1	67.7	240.8	6.5*	6.5*
210	60	140	59.5	238.9	7.9	7.0	62.6	238.9	8.6	7.7	65.2	235.1	5.7*	5.7*
210	60	150	57.0	232.7	6.7	6.0	60.1	232.8	7.4	6.6	62.6	228.8	5.0*	5.0*
210	60	160	54.4	225.8	5.7	5.0	57.5	225.9	6.3	5.6	60.0	221.8	4.4*	4.4*
210	60	170	51.8	218.3	4.9	4.2	54.8	218.4	5.4	4.7	57.2	214.1	4.0*	4.0*
210	60	180	49.0	209.9	4.1	3.5	52.0	210.1	4.6	3.9	54.4	205.6	3.6*	3.6*
210	60	190	46.2	200.8	3.4	2.8	49.1	200.9	3.8	3.2	51.3	196.1	3.2*	3.2*
210	60	200	43.1	190.6	2.8	2.2	46.1	190.8	3.2	2.6	48.2	185.5	2.9*	2.9*
210	60	210	39.9	179.3	2.2		42.8	179.4	2.6					
210	70	60	78.2	281.0	18.5*	18.5*								
210	70	70	76.1	278.7	17.7*	17.7*	79.8	278.3	15.4*	15.4*				
210	70	80	74.0	276.0	16.1*	16.1*	77.7	275.7	14.2*	14.2*				
210	70	90	71.9	273.0	14.7*	14.7*	75.5	272.8	13.1*	13.1*	78.8	269.0	9.3*	9.3*
210	70	100	69.7	269.5	13.5*	13.5*	73.3	269.4	12.1*	12.1*	76.5	265.6	8.2*	8.2*
210	70	110	67.5	265.6	12.5*	11.6	71.1	265.5	10.9*	10.9*	74.3	261.7	7.1*	7.1*
210	70	120	65.3	261.2	10.8	9.9	68.9	261.2	9.5*	9.5*	72.0	257.3	6.2*	6.2*
210	70	130	63.0	256.3	9.3	8.4	66.6	256.5	8.5*	8.5*	69.6	252.5	5.3*	5.3*
210	70	140	60.7	251.0	7.9	7.1	64.2	251.2	7.6*	7.6*	67.2	247.1	4.7*	4.7*
210	70	150	58.3	245.1	6.8	6.0	61.8	245.4	6.8*	6.8	64.8	241.2	4.2*	4.2*
210	70	160	55.9	238.6	5.8	5.1	59.4	238.9	6.0*	5.7	62.2	234.6	3.7*	3.7*
210	70	170	53.4	231.5	4.9	4.3	56.8	231.9	5.4*	4.9	59.6	227.3	3.2*	3.2*
210	70	180	50.8	223.7	4.2	3.5	54.2	224.1	4.7	4.1	56.9	219.3	2.9*	2.9*
210	70	190	48.1	215.1	3.5	2.9	51.5	215.6	4.0	3.4	54.1	210.5	2.6*	2.6*
210	70	200	45.3	205.7	2.9	2.3	48.6	206.1	3.3	2.7	51.1	200.7	2.3*	2.3*
210	70	210	42.3	195.3	2.3		45.6	195.7	2.7		48.0	189.8	2.1*	

LS-238H Tube Boom Working Range



Link-Belt Construction Equipment Company Lexington, Kentucky
A unit of Sumitomo Construction Machinery Co., Ltd.

© Link-Belt is a registered trademark. Copyright 1996. All rights reserved. We are constantly improving our products and therefore reserve the right to change designs and specifications.

LS-238H Tubular Jib Capacity Notes:

- Capacities are for an LS-238H with "ABC" (69,000 lbs. - 31 298 kg) counterweight, 26' (7.92 m) live mast, and 1-3/8" (35 mm) diameter pendants.
2. Capacities are shown in thousands of pounds and are not more than 75% of the tipping loads with the machine standing level on a firm supporting surface.
 3. Capacities are limited to a Link-Belt 62" x 70" (1.57 x 1.78 m) cross-section open throat tube boom and a 30" x 36" (.75 x .91 m) cross-section tube jib with a jib strut properly assembled.
 4. Two parts of 7/8" (22 mm) diameter L-BS Type "RB" wire rope are required for maximum lift. For single part operation, 7/8" (22 mm) diameter L-BS Type "RB" wire rope is recommended.
 5. Capacities are for 30' (9.14 m) thru 70' (21.34 m) jib lengths.
 6. The maximum boom and jib combination is: 210' (64.01 m) boom + 70' (21.34 m) jib.
 7. The least stable condition is over the side.
 8. Booms must be erected and lowered over the end.
 9. Those capacities followed by an asterisk (*) are governed by factors other than those that would cause a tipping condition.
 10. A deduction must be made from the jib capacities for weights of hook blocks, hooks, slings, grapples, load weighing devices, etc.
 11. When using the main hook, while a jib is attached, reduce the main boom capacities by the following values:
 - a) 30' (9.14 m) jib - 2,200 lbs. (998 kg)
 - b) 40' (12.19 m) jib - 2,500 lbs. (1 134 kg)
 - c) 50' (15.24 m) jib - 2,900 lbs. (1 315 kg)
 - d) 60' (18.29 m) jib - 3,200 lbs. (1 452 kg)
 - e) 70' (21.34 m) jib - 3,500 lbs. (1 588 kg)
 12. Refer to all notes on applicable lifting crane capacities in the crane rating manual in addition to these notes.
 13. These capacities apply only to the crane as originally manufactured and normally equipped by Link-Belt Construction Equipment Company.