

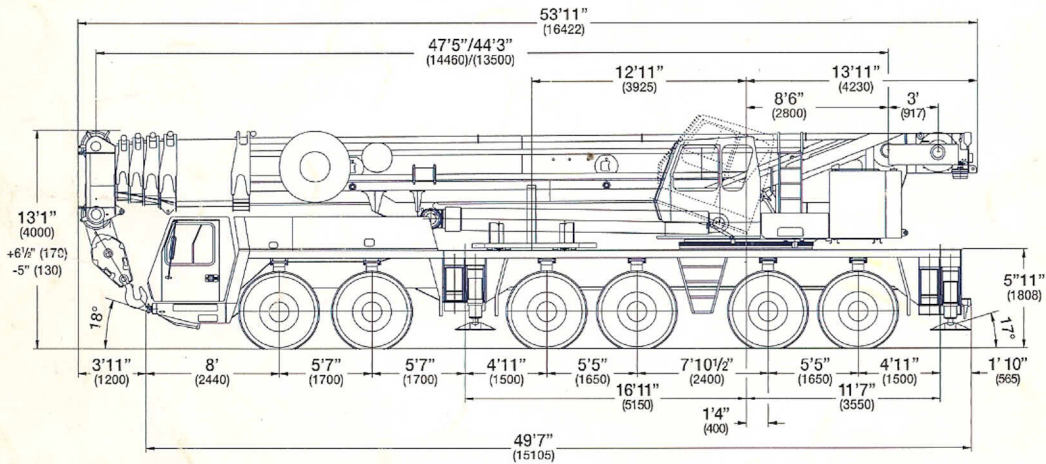
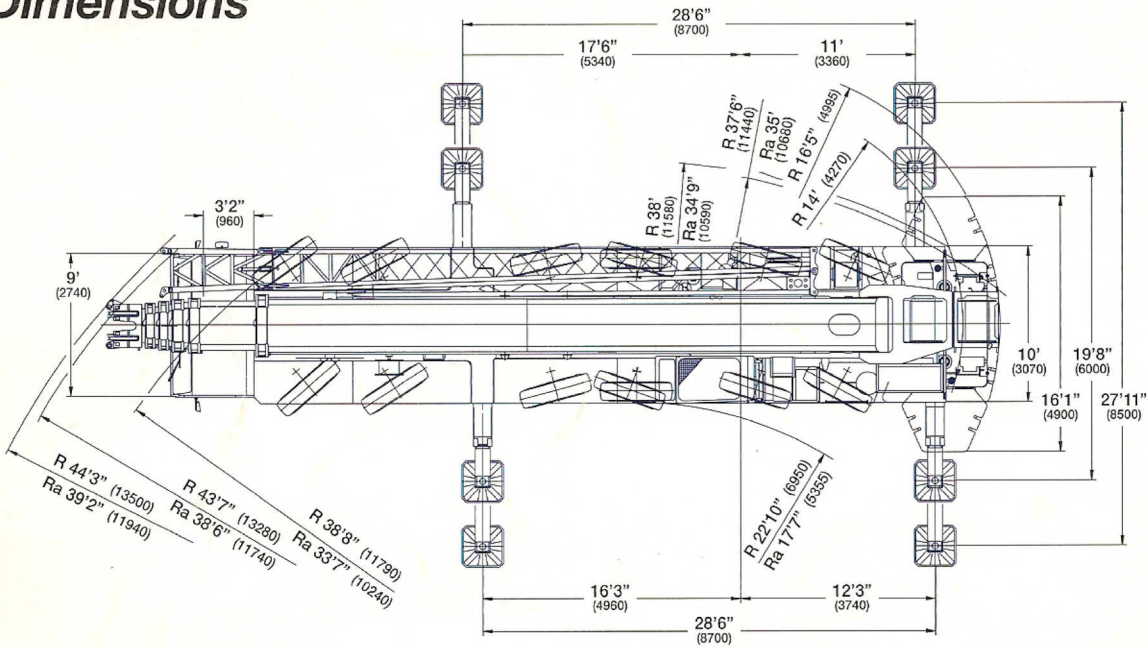


GMK6220

**All Terrain
Hydraulic Crane**



Dimensions



Note: () Reference dimensions in mm

BASIC WEIGHTS (LBS.)	Axles 1 & 2	Axles 3 - 6	Total
With Cummins Power, 20.5 R25 Tires	39,172	102,562	141,734
With Mercedes Power, 20.5 R25 Tires	38,810	102,218	141,028
Additions:			
Outrigger Pads	0	772	772
Auxiliary Hoist	-(3,283)	7,009	3,726
Additional Hydraulic Oil Cooler	-(55)	143	88
Brackets & Hydraulic Reeling Drum for Lattice Extension	397	110	507
Lattice Extension - 43/72 ft	3,704	1,587	5,291
Spare Tire - 14.00 R25	-(425)	1,010	584
Spare Tire - 16.00 R25	-(522)	1,239	717
Spare Tire - 20.5 R25	-(593)	1,402	809
Boom Removal Equipment	53	212	265
Removal:			
Front Outrigger Beams & Jacks	-(3,377)	-(1,980)	-(5,357)
Rear Outrigger Beams & Jacks	3,732	-(9,652)	-(5,919)
Boom Assembly (minus lift cylinder)*	-(20,102)	-(24,806)	-(44,908)
Lift Cylinder*	-(1,457)	-(3,018)	-(4,475)
16.00 R25 Tires in lieu	-(370)	-(741)	-(1,111)
14.00 R25 Tires in lieu	-(899)	-(1,799)	-(2,698)

*Reflects weights with superstructure facing forward

Working range



44 - 197 ft.
(13.5 - 60 m)



138,800 lbs.
(63,000 kg)

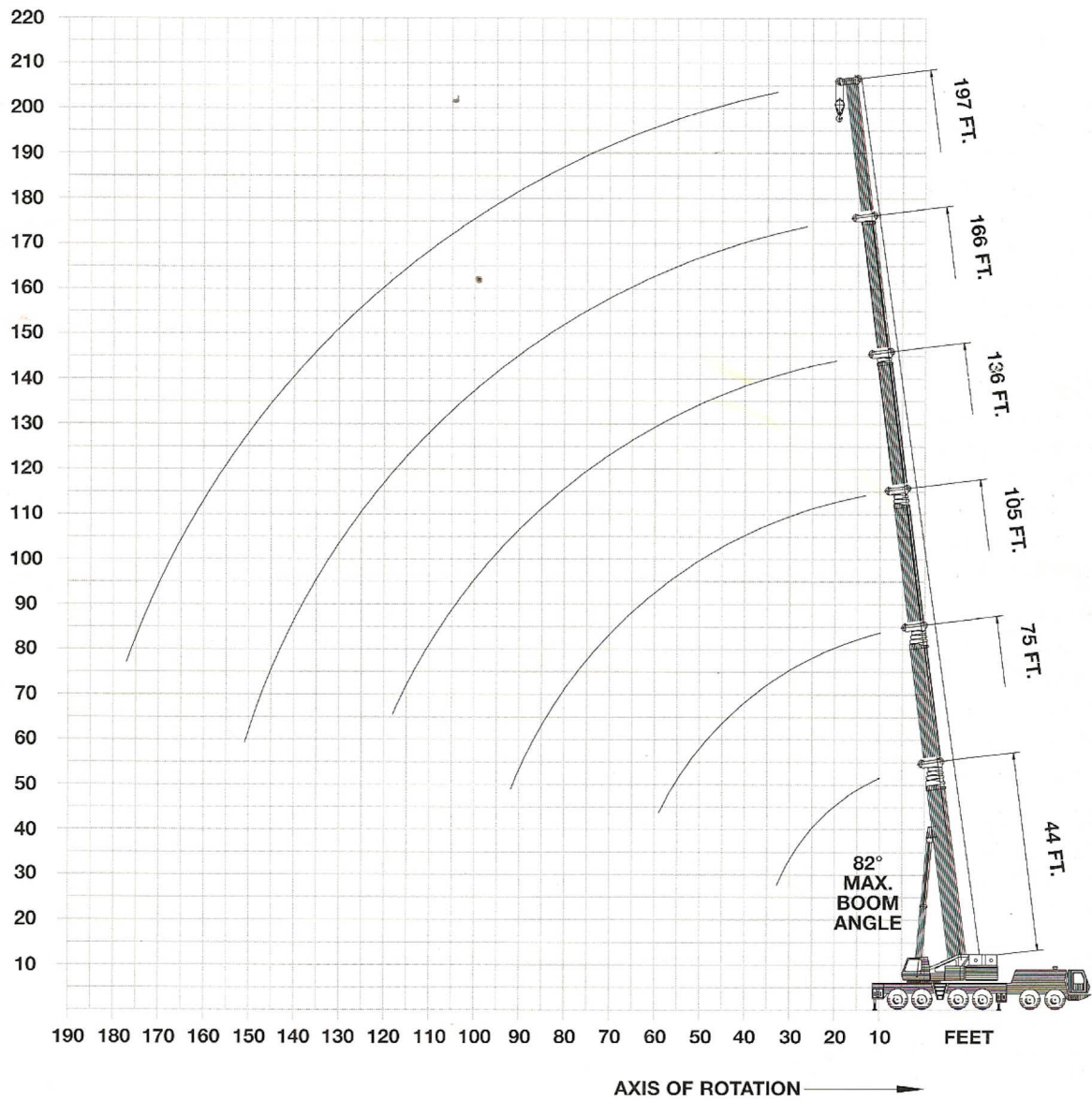


100%



360°

FEET



Superstructure specifications

Boom

44 ft. - 197 ft. (13.5 m - 60 m) six section, full-power boom with patented "twin-lock" boom pinning system. Maximum tip height: 207 ft. (63 m).

Boom Elevation

Single lift cylinder with safety valve provides boom angle from -1.5° to +82°.

Lattice Extension

43 ft. - 72 ft. (13 m - 22 m) lattice swingaway extension. Hydraulically offsettable 5° - 40° with hydraulic luffing.

*Optional Lattice Jib Extension

Two 26 ft. (8 m) inserts for use with lattice swingaway extension to increase length up to 98 ft. (30 m) or 125 ft. (38 m). Hydraulically offsettable 5° - 40° with hydraulic luffing.

Load Moment & Anti-Two Block System

Load moment and anti-two block system with audio/visual warning and control lever lockout provides electronic display of boom angle, length, radius, tip height, relative load moment, maximum permissible load, load indication and warning of impending two-block condition.

Cab

All aluminum construction cab is tiltable (approximately 20°) and includes safety glass and adjustable operator's seat with hydraulic suspension. Other features include engine dependent hot water heater, armrest integrated crane controls, and ergonomically arranged instrumentation.

Swing

3 swing gears with axial piston fixed displacement motors provide swing speed of 0 - 1.7 RPM thru planetary gear box. Also provided is a spring applied, hydraulically released automatic swing brake with foot-operated release for free swing.

Counterweight

138,800 lbs. (63 000 kg) consisting of various sections with hydraulic installation/removal system (see counterweight configuration on page 12).

Engine

Cummins 6BTA5.9-C, diesel, 6 cylinders, water-cooled, turbocharged, 165 HP (123 kW) at 2000 rpm. Max. torque: 538 ft. lbs. (730 Nm) at 1500 rpm. Engine emission: EUROMOT/EPA/CARB (off highway).

Fuel Tank Capacity

53 gal. (200 L).

Hydraulic system

3 separate circuits, 2 axial piston variable displacement pumps, with electronic power limiting control and 1 axial piston variable displacement pump for swing. Standard thermostatically controlled oil cooler keeps oil at optimum operating temperature.

Tank capacity: 259 gal. (980 L)

Control system

Full electronic control of all crane movements is accomplished using electrical control levers with automatic reset to zero. Controls are integrated with the LMI and engine management system by CAN-BUS.

Hoist

Main and auxiliary hoist are powered by axial piston variable displacement motor with planetary gear and brake. "Thumb-thumper" hoist drum rotation indicator alerts operator of hoist movement.

	<u>Main</u>	<u>Auxiliary</u>
Line length:	984 ft. (300 m)	755 ft. (230 m)
Rope diameter:	22 mm	22 mm
Line speed:	426 ft./min.	426 ft./min.
Line pull:	21,000 lbs. (93.4 kN)	21,000 lbs. (93.4 kN)

Electrical system

24 V system with three-phase alternator 28 V/80 A, 2 batteries 12 V/170 Ah.

*Optional equipment

- *Engine-independent hot water heater, with engine pre-heater
- *Second spotlight
- *Stereo/cassette player
- *Air Conditioning
- *Mercedes-Benz engines

* Denotes optional equipment






44 - 197 ft.
 (13.5 - 60.0 m)

138,800 lbs.
 (63,000 kg)

100%
 27'11" Spread

360°

		Pounds (thousands)										
Feet	44	60	75	90	105	121	136	151	166	182	197	
9	440.0†/420.0											
10	406.0	340.0	260.0	189.0								
15	308.0	298.0	258.0	189.0	153.0							
20	254.0	246.0	232.0	187.0	153.0	121.0	92.0					
25	210.0	210.0	202.0	174.0	150.0	121.0	87.0	68.0				
30	169.0	178.0	175.0	155.0	137.0	118.0	82.0	65.0	56.0	45.0		
35		148.0	145.0	138.0	123.0	109.0	76.0	63.0	54.0	44.0	38.8	
40		126.0	122.0	123.0	112.0	99.0	73.0	61.0	52.0	43.0	38.4	
45		108.0	105.0	107.0	102.0	90.0	66.0	59.0	50.0	42.2	37.4	
50			92.0	94.0	93.0	83.0	61.0	56.0	49.0	41.0	36.4	
55			81.0	83.0	85.0	77.0	57.0	51.0	47.0	39.8	35.4	
60				73.0	76.0	72.0	54.0	47.0	43.8	38.4	34.4	
65				66.0	68.0	66.0	51.0	42.4	40.0	36.8	33.4	
70				61.0	61.0	62.0	48.0	39.4	37.2	35.4	32.4	
75				57.0	56.0	58.0	45.0	36.4	34.4	33.2	31.4	
80					50.0	53.0	42.8	34.4	31.8	30.8	30.0	
85					46.0	48.0	41.0	33.0	30.0	28.6	28.0	
90					43.0	43.0	39.2	31.4	28.0	26.4	26.0	
95						40.0	37.4	29.8	26.4	24.4	24.0	
100						36.6	35.6	28.4	25.0	22.4	22.4	
105							34.4	27.2	23.6	21.2	21.0	
110							32.8	26.2	22.2	19.8	19.8	
115							30.2	25.0	20.8	18.6	18.6	
120								24.0	19.6	17.4	17.4	
125								22.8	18.6	16.4	16.4	
130								21.6	17.8	15.4	15.4	
135								20.8	17.0	14.6	14.6	
140									16.2	14.0	13.8	
145									15.4	13.2	13.0	
150									14.8	12.6	12.4	
155										12.0	11.6	
160										11.6	11.0	
165											10.4	
170											9.80	
175											9.20	
180											8.60	

† 440,000 lbs is a Comparative Rating.
 Lifting capacities greater than 350,000 lbs require additional equipment.
 Note: Above chart also available with reduced outriggers.






44 - 197 ft.
 (13.5 - 60.0 m)

94,700 lbs.
 (43,000 kg)

100%
 27'11" Spread

360°

		Pounds (thousands)										
Feet	44	60	75	90	105	121	136	151	166	182	197	
9	440.0†/420.0											
10	406.0	340.0	260.0	189.0								
15	308.0	298.0	258.0	189.0	153.0							
20	254.0	246.0	232.0	187.0	153.0	121.0	92.0					
25	196.0	198.0	194.0	174.0	150.0	121.0	87.0	68.0				
30	155.0	157.0	154.0	155.0	137.0	118.0	82.0	65.8	56.0	45.0		
35		130.0	127.0	129.0	123.0	109.0	76.0	63.0	54.0	44.0	38.8	
40		111.0	107.0	109.0	111.0	99.0	71.0	61.0	52.0	43.0	38.4	
45			96.0	91.0	93.0	90.0	65.0	59.0	50.0	42.2	37.4	
50				77.0	79.0	82.0	61.0	56.0	49.0	41.0	36.4	
55			65.0	67.0	70.0	72.0	57.0	51.0	47.0	39.8	35.4	
60				62.0	64.0	63.0	54.0	47.0	43.8	38.4	34.4	
65				57.0	57.0	56.0	51.0	42.4	40.0	36.8	33.4	
70				52.0	51.0	49.0	48.0	39.4	37.2	35.4	32.4	
75				46.0	46.0	44.0	45.0	36.4	34.4	33.2	31.4	
80					41.0	39.4	41.4	34.4	31.8	30.8	30.0	
85					36.8	37.4	37.2	33.0	30.0	28.6	28.0	
90					33.2	35.2	33.6	31.4	28.0	26.4	26.0	
95						32.0	30.4	29.8	26.4	24.4	24.0	
100						29.2	27.6	28.4	25.0	22.4	22.4	
105							25.0	26.0	23.6	21.2	21.0	
110							23.2	23.8	22.2	19.8	19.8	
115							22.0	21.8	20.8	18.6	18.6	
120								20.0	19.6	17.2	17.4	
125								18.2	18.6	16.2	16.4	
130								16.8	17.0	15.4	15.4	
135								15.4	15.6	14.6	14.0	
140									14.4	13.8	12.8	
145									13.2	12.6	11.6	
150									12.0	11.6	10.4	
155										10.4	9.4	
160										9.60	8.4	
165											7.6	
170											6.8	
175											6.0	
180											5.2	

† 440,000 lbs is a Comparative Rating.
 Lifting capacities greater than 350,000 lbs require additional equipment.
 Note: Above chart also available with reduced outriggers.

THIS CHART IS ONLY A GUIDE AND SHOULD NOT BE USED TO OPERATE THE CRANE. The individual crane's load chart, operating instructions and other instructional plates must be read and understood prior to operating the crane.

Working Range



121 - 197 ft.
(36,8 - 60 m)



43 - 125 ft.
(13 - 38 m)



138,800 lbs.
(63,000 kg)

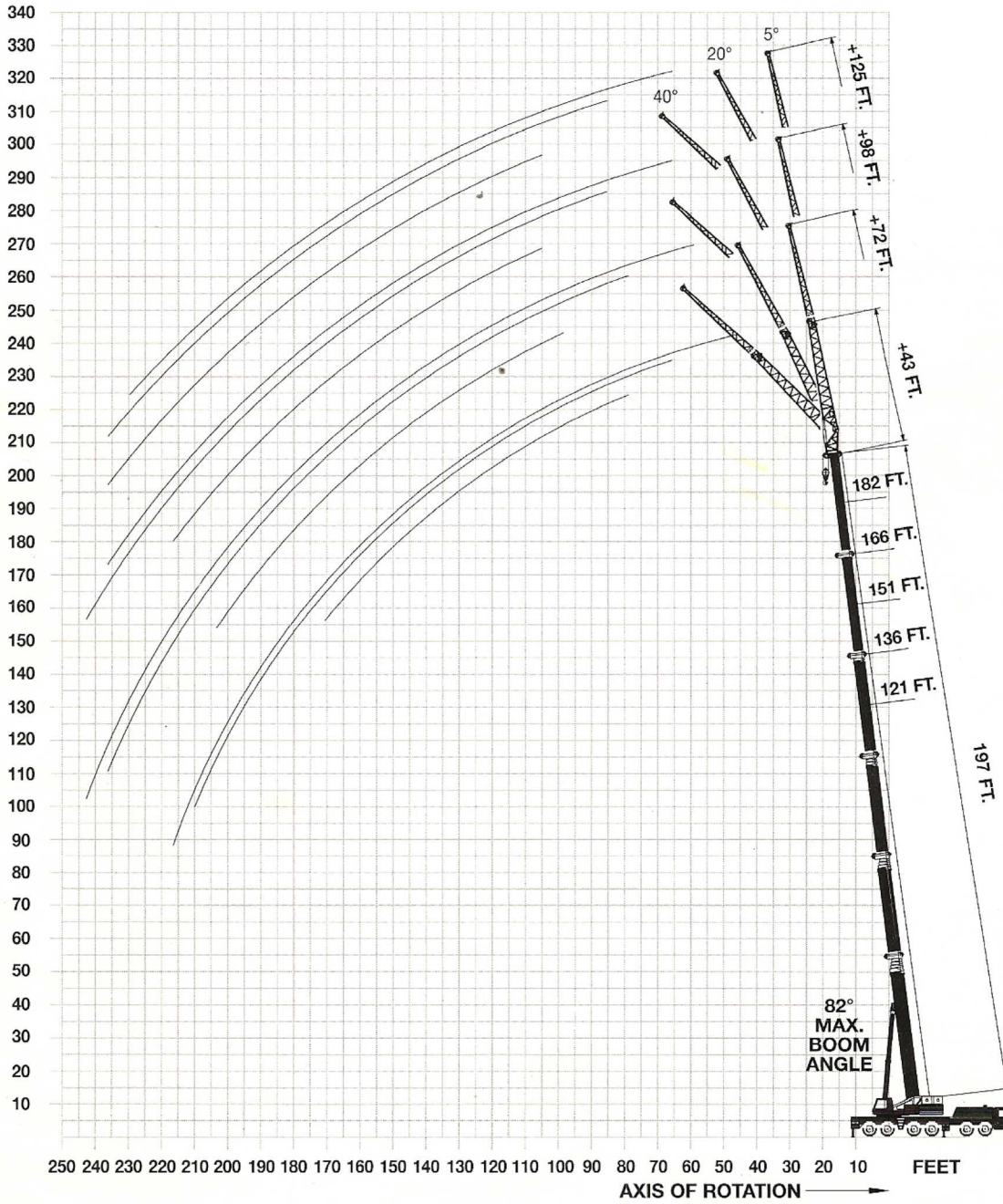


100%



360°

FEET





197 ft.
(60.0 m)



43-72-98-125 ft.
(13-22-30-38 m)



138,800 lbs.
(63,000 kg)



100%
27'11" Spread



360°



Pounds (thousands)

Feet	43 FT			72 FT			98 FT			125 FT		
	5°	20°	40°	5°	20°	40°	5°	20°	40°	5°	20°	40°
40	18.6											
45	18.6											
50	18.4											
55	18.4	18.6		12.2								
60	18.4	18.6		12.2			9.2			6.4		
65	18.2	18.4		12.2			9.2			6.4		
70	18.2	18.4	18.0	12.2			9.2			6.4		
75	18.2	18.4	18.0	12.2	11.0		9.2			6.4		
80	18.2	18.4	18.0	12.2	10.8		9.2			6.4		
85	18.0	18.2	18.0	12.2	10.8		9.2			6.4		
90	17.6	18.0	18.0	12.2	10.8		9.2	9.2		6.4	6.4	
95	17.4	17.8	18.0	12.0	10.6	10.0	9.2	9.2		6.4	6.4	
100	17.0	17.4	18.0	12.0	10.6	10.0	9.2	9.2	7.8	6.4	6.4	
105	16.6	17.0	17.4	12.0	10.6	10.0	9.2	9.2	7.8	6.4	6.4	6.4
110	16.2	16.6	16.6	11.8	10.4	10.0	9.2	9.2	7.8	6.4	6.4	6.4
115	15.6	15.8	16.0	11.8	10.4	9.8	9.2	9.0	7.8	6.4	6.4	6.4
120	14.6	15.0	15.2	11.6	10.4	9.8	9.2	8.8	7.8	6.4	6.4	6.4
125	13.8	14.0	14.4	11.6	10.4	9.8	9.2	8.6	7.8	6.4	6.2	6.2
130	13.0	13.2	13.8	11.6	10.4	9.6	9.2	8.6	7.8	6.4	6.2	6.2
135	12.4	12.6	13.0	11.4	10.2	9.6	9.0	8.4	7.8	6.4	6.0	6.0
140	11.6	12.0	12.4	11.0	10.2	9.6	8.8	8.2	7.8	6.2	6.0	5.8
145	11.0	11.2	11.8	10.4	10.0	9.4	8.6	8.0	7.6	6.2	5.8	5.8
150	10.4	10.6	11.0	10.0	9.8	9.4	8.4	8.0	7.6	6.0	5.8	5.6
155	9.6	10.0	10.4	9.4	9.6	9.4	8.0	7.8	7.4	5.8	5.6	5.6
160	9.0	9.4	9.8	9.0	9.2	9.2	7.8	7.6	7.4	5.8	5.4	5.4
165	8.4	8.8	9.2	8.6	9.0	9.2	7.6	7.4	7.2	5.6	5.4	5.2
170	8.0	8.2	8.6	8.0	8.6	8.8	7.2	7.2	7.0	5.4	5.2	5.2
175	7.4	7.8		7.6	8.0	8.4	6.8	6.8	6.8	5.2	5.2	5.0
180	7.0	7.2		7.2	7.6	8.0	6.6	6.6	6.8	5.0	5.0	5.0
185	6.6	6.8		6.8	7.2	7.6	6.2	6.4	6.6	5.0	5.0	4.8
190	6.0	6.2		6.2	6.8	7.2	5.8	6.0	6.4	4.8	4.8	4.8
195	5.6	5.8		5.8	6.4	7.0	5.4	5.8	6.2	4.6	4.6	4.6
200	5.2	5.4		5.4	6.0	6.4	5.0	5.4	6.0	4.4	4.4	4.6
205	4.8	5.0		5.0	5.6		4.8	5.2	5.6	4.0	4.2	4.4
210	4.4			4.8	5.2		4.4	4.8	5.2	3.8	4.0	4.2
215	4.0			4.4	4.8		4.0	4.4	4.8	3.4	3.8	4.0
220				4.0	4.4		3.6	4.0		3.2	3.6	3.8
225				3.6	4.0		3.4	3.6		2.8	3.2	3.6
230				3.2	3.6		3.0	3.4		2.6	3.0	3.4
235				3.0	3.2		2.6	3.0		2.4	2.8	3.2
240				2.6			2.4	2.8			2.4	
245				2.4				2.4				



197 ft.
(60.0 m)



43-72-98-125 ft.
(13-22-30-38 m)



138,800 lbs.
(63,000 kg)



100%
27'11" Spread



360°



Pounds (thousands)

Feet	43 FT		72 FT		98 FT		125 FT	
	5° - 20°	20° - 40°	5° - 20°	20° - 40°	5° - 20°	20° - 40°	5° - 20°	20° - 40°
55	16.8							
60	16.8							
65	16.8							
70	16.8	16.4						
75	16.8	16.4	10.0					
80	16.8	16.4	9.8					
85	16.6	16.4	9.8					
90	16.4	16.4	9.8					
95	16.2	16.4	9.6	9.2	8.4		5.8	
100	15.8	16.2	9.6	9.0	8.4	7.0	5.8	
105	15.4	15.8	9.6	9.0	8.4	7.0	5.8	5.8
110	15.0	15.2	9.6	9.0	8.4	7.0	5.8	5.8
115	14.4	14.4	9.4	9.0	8.2	7.0	5.8	5.8
120	13.6	13.8	9.4	9.0	8.0	7.0	5.8	5.8
125	12.8	13.2	9.4	8.8	7.8	7.0	5.8	5.8
130	12.0	12.4	9.4	8.8	7.8	7.0	5.6	5.6
135	11.4	11.8	9.4	8.6	7.6	7.0	5.6	5.4
140	10.8	11.2	9.4	8.6	7.4	7.0	5.4	5.4
145	10.2	10.6	9.2	8.6	7.4	7.0	5.4	5.2
150	9.6	10.0	9.0	8.6	7.2	6.8	5.2	5.2
155	9.2	9.4	8.6	8.4	7.0	6.8	5.2	5.0
160	8.6	8.8	8.4	8.4	7.0	6.6	5.0	5.0
165	8.0	8.4	8.2	8.4	6.8	6.6	4.8	4.8
170	7.6	7.8	7.8	8.0	6.6	6.4	4.8	4.8
175	7.0		7.4	7.6	6.2	6.2	4.6	4.6
180	6.6		7.0	7.4	6.0	6.2	4.6	4.6
185	6.2		6.6	7.0	5.8	6.0	4.4	4.4
190	5.6		6.2	6.6	5.6	5.8	4.4	4.4
195	5.2		5.8	6.2	5.2	5.6	4.2	4.2
200	4.8		5.4	5.8	5.0	5.4	4.0	4.2
205	4.4		5.0		4.6	5.0	3.8	4.0
210			4.6		4.4	4.8	3.6	3.8
215			4.4		4.0	4.4	3.4	3.6
220			4.0		3.6		3.2	3.4
225			3.6		3.4		3.0	3.2
230			3.2		3.0		2.8	3.2
235			3.0		2.8		2.6	2.8
240					2.4			
245					2.2			

THIS CHART IS ONLY A GUIDE AND SHOULD NOT BE USED TO OPERATE THE CRANE. The individual crane's load chart, operating instructions and other instructional plates must be read and understood prior to operating the crane.

GMK6220

197 ft.
(60.0 m)

43-72-98-125 ft.
(13-22-30-38 m)

94,700 lbs.
(43,000 kg)

100%
27'11" Spread

360°



Pounds (thousands)

Feet	43 FT			72 FT			98 FT			125 FT		
	5°	20°	40°	5°	20°	40°	5°	20°	40°	5°	20°	40°
40	18.6											
45	18.6											
50	18.4											
55	18.4	18.6		12.2						6.4		
60	18.4	18.6		12.2			9.2			6.4		
65	18.2	18.4		12.2			9.2			6.4		
70	18.2	18.4	18.0	12.2			9.2			6.4		
75	18.2	18.4	18.0	12.2	11.0		9.2			6.4		
80	18.2	18.4	18.0	12.2	10.8		9.2			6.4		
85	18.0	18.2	18.0	12.2	10.8		9.2			6.4		
90	17.6	18.0	18.0	12.2	10.8		9.2	9.2		6.4	6.4	
95	17.4	17.8	18.0	12.0	10.6	10.0	9.2	9.2		6.4	6.4	
100	17.0	17.4	18.0	12.0	10.6	10.0	9.2	9.2	7.8	6.4	6.4	
105	16.6	17.0	17.4	12.0	10.6	10.0	9.2	9.2	7.8	6.4	6.4	6.4
110	16.2	16.6	16.6	11.8	10.4	10.0	9.2	9.2	7.8	6.4	6.4	6.4
115	15.6	15.8	16.0	11.8	10.4	9.8	9.2	9.0	7.8	6.4	6.4	6.4
120	14.6	15.0	15.2	11.6	10.4	9.8	9.2	8.8	7.8	6.4	6.4	6.4
125	13.8	14.0	14.4	11.6	10.4	9.8	9.2	8.6	7.8	6.4	6.2	6.2
130	13.0	13.2	13.8	11.6	10.4	9.6	9.2	8.6	7.8	6.4	6.2	6.2
135	12.4	12.6	13.0	11.4	10.2	9.6	9.0	8.4	7.8	6.4	6.0	6.0
140	11.6	12.0	12.4	11.0	10.2	9.6	8.8	8.2	7.8	6.2	6.0	5.8
145	11.0	11.2	11.8	10.4	10.0	9.4	8.6	8.0	7.6	6.2	5.8	5.8
150	10.4	10.6	11.0	10.0	9.8	9.4	8.4	8.0	7.6	6.0	5.8	5.6
155	9.6	10.0	10.4	9.4	9.6	9.4	8.0	7.8	7.4	5.8	5.6	5.6
160	8.6	9.0	9.4	9.0	9.2	9.2	7.8	7.6	7.4	5.8	5.4	5.4
165	7.6	8.2	8.4	8.6	9.0	9.2	7.6	7.4	7.2	5.6	5.4	5.2
170	6.8	7.2	7.4	8.0	8.6	8.8	7.2	7.2	7.0	5.4	5.2	5.2
175	6.0	6.4		7.6	8.0	8.4	6.8	6.8	6.8	5.2	5.2	5.0
180	5.2	5.6		6.8	7.6	8.0	6.6	6.6	6.8	5.0	5.0	5.0
185	4.4	4.8		6.0	7.0	7.6	6.2	6.4	6.6	5.0	5.0	4.8
190	3.8	4.0		5.4	6.2	6.8	5.6	6.0	6.4	4.8	4.8	4.8
195	3.2	3.4		4.8	5.4	6.0	4.8	5.8	6.2	4.6	4.6	4.6
200	2.6	2.8		4.2	4.8	5.2	4.2	5.0	5.8	4.2	4.4	4.6
205				3.6	4.2		3.6	4.4	5.0	3.6	4.2	4.4
210				3.0	3.6		3.2	3.8	4.4	3.0	4.0	4.2
215				2.4	3.0		2.6	3.2	3.6	2.6	3.4	4.0
220					2.4			2.6			2.8	3.4
225								2.2			2.2	2.8
230											2.2	2.2

197 ft.
(60.0 m)

43-72-98-125 ft.
(13-22-30-38 m)

94,700 lbs.
(43,000 kg)

100%
27'11" Spread

360°

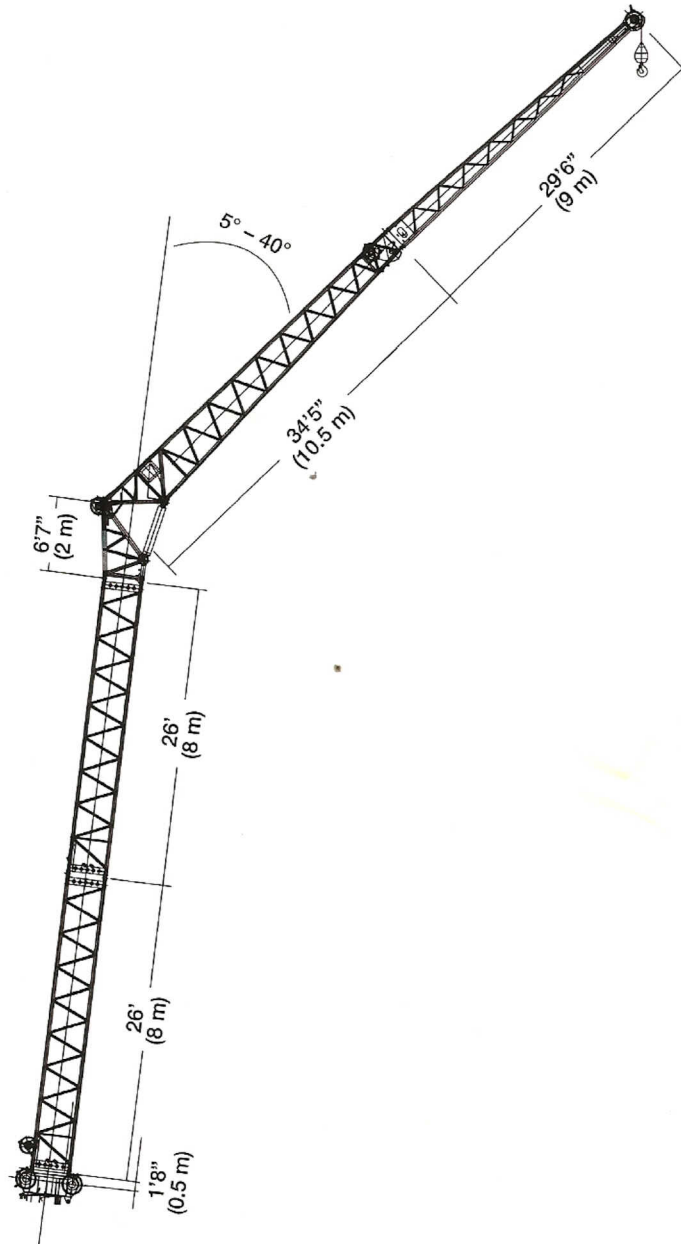


Pounds (thousands)

Feet	43 FT		72 FT		98 FT		125 FT	
	5° - 20°	20° - 40°	5° - 20°	20° - 40°	5° - 20°	20° - 40°	5° - 20°	20° - 40°
55	16.8							
60	16.8							
65	16.8							
70	16.8	16.4						
75	16.8	16.4	10.0					
80	16.8	16.4	9.8					
85	16.6	16.4	9.8					
90	16.4	16.4	9.8					
95	16.2	16.4	9.6	9.2				
100	15.8	16.2	9.6	9.0	8.4		5.8	
105	15.4	15.8	9.6	9.0	8.4	7.0	5.8	
110	15.0	15.2	9.6	9.0	8.4	7.0	5.8	5.8
115	14.4	14.4	9.4	9.0	8.2	7.0	5.8	5.8
120	13.6	13.8	9.4	9.0	8.0	7.0	5.8	5.8
125	12.8	13.2	9.4	8.8	7.8	7.0	5.8	5.8
130	12.0	12.4	9.4	8.8	7.8	7.0	5.6	5.6
135	11.4	11.8	9.4	8.6	7.6	7.0	5.6	5.4
140	10.8	11.2	9.4	8.6	7.4	7.0	5.4	5.4
145	10.2	10.6	9.2	8.6	7.4	7.0	5.4	5.2
150	9.6	10.0	9.0	8.6	7.2	6.8	5.2	5.2
155	8.6	9.2	8.6	8.4	7.0	6.8	5.2	5.0
160	7.8	8.2	8.4	8.4	7.0	6.6	5.0	5.0
165	7.0	7.4	8.2	8.4	6.8	6.6	4.8	4.8
170	6.2	6.6	7.6	8.0	6.6	6.4	4.8	4.8
175	5.4		6.8	7.6	6.2	6.2	4.6	4.6
180	4.8		6.2	7.0	6.0	6.2	4.6	4.6
185	4.0		5.6	6.4	5.6	6.0	4.4	4.4
190	3.4		4.8	5.6	5.0	5.8	4.4	4.4
195	2.8		4.4	5.0	4.4	5.2	4.2	4.2
200	2.4		3.8	4.4	3.8	4.6	3.8	4.2
205			3.2		3.4	4.0	3.4	4.0
210			2.8		2.8	3.4	2.8	3.6
215			2.2		2.4	3.0	2.4	3.0
220								2.6

THIS CHART IS ONLY A GUIDE AND SHOULD NOT BE USED TO OPERATE THE CRANE. The individual crane's load chart, operating instructions and other instructional plates must be read and understood prior to operating the crane.

Boom extension configurations



Length (ft.)	Intermediate section boom extension make-up			
	26' (8 m)	6'7" (2 m)	34'5" (10.5 m)	29'6" (9 m)
43	—	1x	1x	—
72	—	1x	1x	1x
98	1x	1x	1x	1x
125	2x	1x	1x	1x